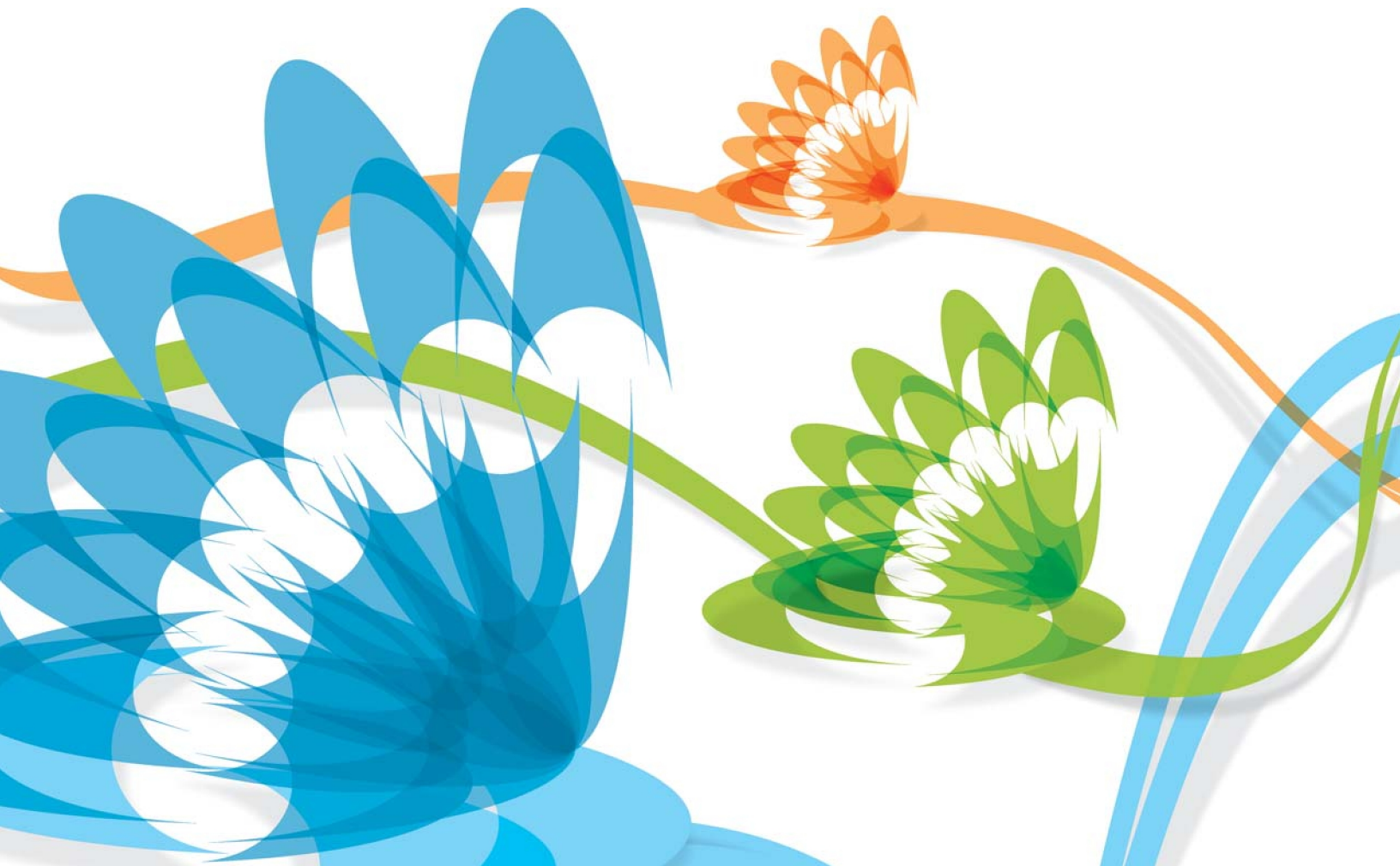


PRINTSHOP MAIL SUITE



PrintShop Mail ME Release Notes



Copyright Information

Copyright © 1994-2017 Objectif Lune Inc. All Rights Reserved.

No part of this publication may be reproduced, transmitted, transcribed, stored in a retrieval system, or translated into any other language or computer language in whole or in part, in any form or by any means, whether it be electronic, mechanical, magnetic, optical, manual or otherwise, without prior written consent of Objectif Lune Inc.

Objectif Lune Inc. disclaims all warranties as to this software, whether expressed or implied, including without limitation any implied warranties of merchantability, fitness for a particular purpose, functionality, data integrity or protection.

PlanetPress and PrintShop Mail are registered trademarks of Objectif Lune Inc.

PostScript and Acrobat are registered trademarks of Adobe Systems Inc.

Pentium is a registered trademark of Intel Corporation.

Windows is a registered trademark of Microsoft Corporation.

Adobe, Adobe PDF Library, Adobe Acrobat, Adobe Distiller, Adobe Reader, Adobe Illustrator, Adobe Photoshop, Optimized Postscript Stream, the Adobe logo, the Adobe PDF logo are either registered trademarks or trademarks of Adobe Systems Incorporated in the United States and/or other countries.

Trademarks of other companies mentioned in this documentation appear for identification purposes only and are the property of their respective companies.

| | |
|----------|-----------------------------------|
| Title | PrintShop Mail ME - Release Notes |
| Revision | 2017/04/13 |

| | |
|--|----------|
| 1 What's new in PrintShop Mail ME 5.4 | 1 |
| 2 System Requirements | 4 |
| 3 Version notes..... | 5 |
| 3.1 Improvements | 5 |
| 3.2 Known issues..... | 8 |
| 3.3 Recommendations | 9 |



1 What's new in PrintShop Mail ME 5.4

Highlights

- PrintShop Mail 5.4 runs natively on the MacIntel platform. Besides the speed improvement for MacIntel machines, the speed improvement is noticeable for PowerPC machines as well. Together with this change the application has gained greater stability and reliability.
- PrintShop Mail 5.4 will run on Mac OS X 10.4.11 or later.
- The Print dialog is simplified by adding the PrintShop Mail controls to the first page. There is no need for changing the drop-down menu anymore to look for the PrintShop Mail controls. The advanced settings are still available.
- The text box in PrintShop Mail has some additional features like subscript and superscript support and variables have a gray lozenge behind them for easy recognition.
- PDF files can be used as variable object, just like you can use variable images. This also applies to other multipage image formats like TIFF or Animated GIF.
- The print performance has been improved. Print Preview does not charge credits from your hardware key.
- The VPS print technology is now conforming the VPS 1.5 specifications.

New Features

General

- There is no more installer. Just open the disk image (.dmg file) and drag the application folder to the location of your choice.
- The dongle driver software can be installed/updated from the application, but is also made available separately. The dongle driver software is installed the first time PrintShop Mail is run.
- PrintShop Mail notices if fonts have been added to or removed from the system, there is no more need to quit and restart the application.
- Hardware-key information is now displayed in a floating window and this will update dynamically when a dongle is inserted, removed, upgraded or charged.

User Interface

- The color palette indicates which color you are editing (background, text font color, bleed margin, folding line, crop-marks, etc.).
- Language of the application can be set from within the application itself and all windows will localize "on-the-fly". Note that some dialogs that belong to the operating system (printing, opening files, ...) will remain in the OS language.
- Repetition preview (Preferences Panel) is more accurate and indicates bleed (added, included or none) and offset or centering.
- Tool tips for layout objects present quick overview of object properties.
 - It is possible to navigate the user interface with the keyboard. This is possible in most dialogs (make sure you switch on Full Keyboard Navigation in the System Preferences).
 - Preferences).
- There is a preference setting (checkbox) which allows for fading floating windows (e.g. database or variables) in and out. These windows will, after a delay of about 30 seconds, become translucent.
- Sliders for zoom, layout and database records have been added in the window toolbar.
- Toolbar now has customization icon on the right hand side.
- Contextual menus have been added for Layout - and Variables floaters.
- Progress indicators are shown when the application is busy. Lengthy processes (Printing, Sorting, Filtering, Verifying) can be cancelled more easily.
- Embed PostScript items can be added, removed and set as default. Embed PostScript items favorites are saved in the user preference folder (~/Library/ Preferences/com.printshopmail.54/ PSMailPostScript.strings) and can be imported by dropping them on the window of Embed PostScript items, making it easy to share them (note that the name must be "PSMailPostScript.strings"). Note: a

5.3 "EmbedPS.strings" file can also be dropped on the window to import them and it is possible to import a "PSMail Favorites.Embed PostScript.xml" from the Windows Edition of PrintShop Mail.

- Expression Favorites are saved in the user preference folder (~/Library/ Preferences/ com.printshopmail.54/PSMailFavorites.strings) and can be imported by dropping them on the list of expression favorites, making it easy to share them.
- Whenever a path is displayed (to a file or folder, f.i. Hotfolder), there is a contextual menu to Reveal or Open the path in the Finder.
- In most floaters (warnings, variables, datasource, fonts) hovering over a row will display a tooltip for that row. Convenient if text is truncated.
- In the variables floater, hitting enter or return will open the expression editor for the selected variable.
 - Drag and Drop support has been enhanced significantly:
 - Dragging an object while holding the shift key will move the object over the X or Y axis only.
 - Dragging images (any supported format) from Finder onto the layout will generate an image object.
 - Dragging a folder of images onto the layout will create a variable image object. You can edit its expression from the Object Inspector.
 - It is possible to drag & drop a data source in the expression editor's database field list, in the database window and in the main window.
 - It is possible to drag & drop text files in the text file import window, where you can select the separation mark and encoding, to connect a different text datasource (different from initially opened).
 - A PrintShop Mail document can be opened by dragging the document (or its alias) on the application main window
 - Layouts can be dragged from the Document Layout window to the Finder. In such case a separate document will be created with those layouts.
 - Layouts can be dragged from the Document Layout window to the Trash (OS 10.4) or Trash window (OS 10.5). This will cause the layouts to be removed.

Designing documents

- Dragging a guide line shows the vertical or horizontal coordinate in a tooltip. A contextual menu allows you to set the precise location.
- Objects will snap to the printable area lines or to the layout border when you position it near these (guide)lines.
- You can edit an expression for an image through the object inspector and the current expression is indicated with a tooltip.
- Placing an image object which has multiple pages (i.e. PDF, TIFF or Animated GIF) will typically create multiple layouts. You can change the displayed page in the object inspector.
- Placing a multi-page image while holding down the Option key will just add a single image object. You can set the displayed page with the object inspector.
- A layout can be moved with a top-left offset and a bottom-right offset. A bottom-right offset of 0 is identical to 5.3.1 behavior. Alternative, a layout can be centered on the paper, overriding any top-left offset or bottom-right offset.
- Improved non-obtrusive validation feedback with tooltips, when entering incorrect values.
- Each text object has its own Undo stack for editing. If you want to undo editing operations for a text object, go back into editing mode. Outside of editing mode, only "larger" operations like adding an object are undoable.
 - Step through records within the expression builder to see the result of the
 - expression for that record.
- You can drop a datasource on the "Fields" table within the Expression editor, convenient if you forgot to open your datasource when you started editing expressions.
- Layout expression that evaluate to Skip for a print technology that does not support 'Skip' are now also included in the warnings.
- Warnings have a contextual menu that opens the Object Inspector or Expression Editor (if applicable).
- Warnings (e.g. invalid expressions) are now "collated", i.e. all similar warnings are grouped. Warnings are generated faster.
- You can rename a layout from the Document Layouts window.

Variables

- Expressions can be copied/pasted from the variable list without opening the expression editor.
- Expression result is always shown, otherwise a reason is shown why the expression is not yet valid (e.g. missing quote). If the result of an expression has multiple lines, a tooltip will show the complete result.
- Variables in text are indicated with a grey background behind them, both during editing and during preview, but are of course printed normally. Triple click on one to open its expression editor.

Database

- Faster database handling: the application will easily open and handle a database with a million records.
- When opening a text database, a small preview of the database is shown in an import window. The separator (typically tab or comma) is guessed, but can be overridden here. The import window also gives an option to change the database encoding to match the text encoding.
- Sort fields are indicated with an up or down arrow in the database floater.
- Encoding popup was added to the database floater and is identical to the encoding menu in the main menu bar.
- Filtering and Sorting states are indicated in Tooltips. Once complete, the state of a filtered and sorted datasource is saved with the document that uses it (the datasource itself is never modified), resulting in much faster opening. Filtering and Sorting can be aborted.

Printing

- PDF preview is now done internally. If you ask for a Preview, no credits will be charged from the hardware key. Credits will be charged if you explicitly ask to save as PDF or PostScript file.
- The HotFolder log file can be opened from the Preferences panel.
- You can set the HotFolder path by dragging the folder onto the Preferences>Hotfolder panel.
- There is a preference setting (checkbox) to specify that vertical text objects should be printed as an EPS image. This is particularly useful if ligatures in vertical text objects do not print correctly.
- If you have no printer setup on your system, PrintShop Mail will generate a warning and disable the Print menu items.
- HotFoldering will ignore open documents or datasources. This is to prevent PrintShop Mail trying to print incomplete documents (that are being edited or still being copied to the HotFolder location).
- Copy Fitting is now also supported for vertical text.
- Remaining credits are shown in the print dialog.
- Split job: job-names are now consistent with the Windows Edition of PrintShop Mail.



2 System Requirements

PrintShop Mail Macintosh®:

- Power PC® G4, 1GHz
- Mac OS X 10.4.11 through 10.9.x
- 1GB of RAM
- 50 MB of available hard-disk space
- 1,024 x 768 screen resolution
- CD-ROM drive



3 Version notes

3.1 Improvements

PrintShop Mail ME 5.4.6

PrintShop Mail 5.4.6 is a maintenance-release for PrintShop Mail 5.4.5

- Bugfix: PPML output wasn't correct.
- Bugfix: On Mac OS X 10.7 the output did not contain any tif images.
- Bugfix: Minimum font size value wasn't saved (Object Properties).
- Bugfix: Solved duplex setting for Flip On Short edge.

PrintShop Mail ME 5.4.5

PrintShop Mail 5.4.5 is a maintenance-release for PrintShop Mail 5.4.4

- Bugfix: In certain scenarios the ppml could not be zipped.

PrintShop Mail ME 5.4.4

PrintShop Mail 5.4.4 is a maintenance-release for PrintShop Mail 5.4.3.

- Justified alignment in text now prints.
- Spacing between layouts now taken into account.
- Bug fixed generating PostScript for some (Japanese) fonts.
- Some translation issues fixed.
- Display and printing of text paragraphs with white space before the paragraph now correct.
- Display of invisible characters (tab, space, return) fixed if paragraph spacing present.
- Crash fixed when Presets were present in the print dialog.
- No longer limit size of dragged in images to layout size.
- Improved editing of font, font size and leading in text objects. Now handles multiple selection ranges.
- Font and Size popups show multiple values used (font names and sizes) in tooltip.
- Mouse location and selected object shown in ruler.
- If moving/resizing single object, location/size shown in toolbar.
- For consistency, goto record added to database menu.
- Text ruler has contextual menu for units and (if editing) tabs. There is also a menu for the help lines button in the top left corner.
- The application was verified on Mac OS X 10.6 Snow Leopard and some bugs were fixed.
- The application runs on Mac OS X 10.4.11, 10.5.7 and Mac OS X 10.6. For 10.6 Rosetta is required.

PrintShop Mail ME 5.4.3

PrintShop Mail 5.4.3 is a maintenance-release for PrintShop Mail 5.4.2.

- Stability of the application was improved.
- Bug fixed opening CSV (comma separated values) and some Excel XML databases. From text database fields quotes are stripped again.
- When importing a UTF8 text file as data, the preview was incorrect.
- Bug fixed with crop-marks.
- Crashing bug fixed with layout repetition.
- Layout repetition is now indicated on the layout.

- Layout size can be set from a number of standard papers, including some common envelopes and labels. The corresponding repetition is also used.
- Warnings can be copied as text. Variables can be renamed.
- Variables can be copied as text. Variables indicate where they are used.
- Fonts can be copied as text. Fonts indicate where they are used. Fonts are updated when text is edited. Local fonts show path of font file as tooltip. Fonts referenced from EPS files or from TEXT_FILE() are indicated in tooltips. Gathering font information can be aborted.
- Copying Warnings, Variables or Fonts as text may be handy for support issues.
- Images with transparency did not display correct on the layout; they printed ok.
 - EPS files with referenced fonts not present on your local system could crash on
 - 10.5 Intel (ok on 10.4 or 10.6). This is detected and the user is alerted to the fact.
- EPS files with a DOS binary header now display ok.
- EPS files with (attend) for BoundingBox or other DSC entries now display ok.
- The dongle information window has a button to request a dongle upgrade.
- The EULA is shown once.
- Some menu items now sport icons, like in the Windows Edition.
- The main window toolbar has some extra tools to show all objects (which allows you to select objects hidden behind other objects) and for zooming the layout. Use the Customize button to add these extra tools.
- Some expressions like TODAY() now allow empty parameters, as in the Windows Edition.
 - The operators PAGE_COUNT(), RECORD_COUNT(), LAYOUT_COUNT(), CHANGED(), TOTALPAGES(), OBJECT_EMPTY() and TEXT_FILE() were added. RECORDNUMBER() can now also be spelled as RECORD_NR(), as in
 - the Windows Edition.
- When using PPML, you can now choose where a folder / zip file will be saved. The default is your Desktop. To stress the fact that currently you can not send PPML directly to a PPML RIP, the "Print" buttons now says "Save".

Notes on New Operators

- TEXT_FILE() returns the content of an external text or rtf file. The content itself can contain variables, eg @name@, and these variables will be expanded. Note that this becomes fairly slow with larger external files, so it is limited to files of a maximum of 1GB. In reality it is usable with a page of text.
- TOTALPAGES(), returns the number of pages in an external image file. So 0 if not found, 1 for for instance a jpeg file and potentially a higher number for pdf, tiff or animated gif files.
- OBJECT_EMPTY() return true if there is no content in an object, i.e. text is empty (or only white space) after variable expansion or image files are not found or have an invalid page number.
- CHANGED() indicates if the value of a database field has changed since its previous value. Say you have a database with a sorted customer number, you can use this to detect if the customer changed.
- PAGE_COUNT(), RECORD_COUNT(), LAYOUT_COUNT() and RECORD_NR() return these values at design time and at print time.
- See the help file for more information on these operators.
- For support of these new operators a popup menu with all objects and a button to select a file was added to the Expression Window.
- The functions that use a file (TEXT_FILE(), TOTALPAGES() and FILE_EXISTS()) don't need full path names. They will resolve files in a similar way a variable image object does (eg next to the PSM Document also found).

PrintShop Mail ME 5.4.2

PrintShop Mail 5.4.2 is a maintenance-release for PrintShop Mail 5.4.1.

- Images with bit depth over 32 bit are detected. They can not be printed on some rips.
- Dutch KIX (post-code) table updated to 2009.
- In PPML rotated objects with frames now print correctly.
- Fix for duplex printing.
- Fix for PostScript embedding and overprint.

PrintShop Mail ME 5.4.1

PrintShop Mail 5.4.1 is a maintenance-release for PrintShop Mail 5.4.

- General performance improvements.
- Coordinates for guidelines are now shown in the selected measurement units (points, mm, picas, ...).
- It is now possible to move a guideline to an exact position through a contextual menu.
- The text alignment property will now be saved properly.
- When double clicking fields, functions or favorites in the expression builder, the insertion point now properly adjusts, allowing you, f.i., to continue adding data-fields to your expression without having to de-select the previously selected data-field.
- Documents containing brackets '(' and ')' are now printed correctly.
- Support for special characters has been improved.
- Using VPS print technology with APR: .jpg images are now scaled correctly.
- Using VIPP and landscape orientation: some layouts would be clipped; this has been fixed.
- Embed PostScript is now enabled for documents with a single layout.
- The color space (rgb, cmyk, ...) is indicated in the tooltip for a color. The color panel "follows" the color space of the selected color.
- Depending on the version of Mac OS X, PDF documents with transparencies may not display and print correctly. PrintShop Mail now shows a warning on the PDF. In such case you best use an EPS version of the PDF instead.
- Improved keyboard navigation support (e.g. ?+? for invoking Help)
- Excel 2001 support has been restored.
- Improved support for UTF16 BE, UTF32 LE, and UTF32 BE encoded txtdatabases
- When using a session limited hardware key PrintShop Mail no longer runs in Designer Mode (no watermark as long as there are credits within the session).
- Localization has been optimized.

3.2 Known issues

The following issues are currently known:

- Opening documents that were saved with previous version(s) of PrintShop Mail (versions before 5.1, meaning 4 up to & including 5.0), you need to point again to any used static images and it is recommended to save these documents in this current version of PrintShop Mail.
- If a printer has a *custom* Printing Dialog Extension (PDE) for setting duplex information, the setting may not be picked up by PrintShop Mail. The resulting job may be printed simplex.
- Text objects with Vertical layout: font style underline: contrary to what one might expect, the line is drawn to the right of the characters, not to the left or under each character.
- Page Number objects are inserted on layouts, not on pages. This may lead to unexpected results especially when using layout repetition.

3.3 Recommendations

- It is advised not to remove the hardware key while PrintShop Mail is printing: in case the printing job needs to be cancelled, it would be impossible to reset the charged credits.
- Monitor Hotfolder: before using this feature, please make sure your PrintShop Mail documents open without errors.
- If you experience encoding issues for databases, f.i. you cannot find the correct encoding table, you may need to save the database as Unicode through MS Excel.
- PrintShop Mail indicates if a document was created with an older (or newer) version of PrintShop Mail. Converted documents should be reviewed and saved.
- While editing an expression or favorite, a tab will leave the text field. If you want to insert an actual tab, use option-Tab.
- If you drag a large text file on a layout, PrintShop Mail will assume that it is a database. Use copy/paste to work around this feature.
- In order to use MS Excel databases (.xls), you best have MS Excel 2004 or later installed on your system.
- When saving as a PDF in OS 10.5, it is recommended not to specify any security features, as printing will then fail.
- It is always a good practice to make sure you use the latest PPD available from your printer vendor. The OS may not always provide these already.