

PrintShop Mail Connect

OL[®] Software

Release Notes

Version: 2020.2

PrintShop Mail Connect

OL® Software

Release Notes

Version 2020.2

Last Revision: 2020-11-11

Objectif Lune, Inc.
2030 Pie-IX, Suite 500
Montréal, QC, Canada, H1V 2C8

+1 (514) 875-5863

www.objectiflune.com

All trademarks displayed are the property of their respective owners.

© Objectif Lune, Inc. 1994-2020. All rights reserved. No part of this documentation may be reproduced, transmitted or distributed outside of **Objectif Lune Inc.** by any means whatsoever without the express written permission of **Objectif Lune Inc.**

Objectif Lune Inc. disclaims responsibility for any errors and omissions in this documentation and accepts no responsibility for damages arising from such inconsistencies or their further consequences of any kind. **Objectif Lune Inc.** reserves the right to alter the information contained in this documentation without notice.

Table of Contents

Table of Contents	4
OL PrintShop Mail Connect Release Notes 2020.2	5
License Update Required for Upgrade to Connect 2020.x	5
Backup before Upgrading	6
Overview	6
OL Connect 2020.2 Enhancements	7
OL Connect Security Improvements	7
Print Manager Improvements	7
General Improvements	7
Installer Improvements	8
Connect 2020.2 Designer Improvements	9
Improved Background Image options	9
Scripting Improvements	9
General Designer Improvements	11
Connect 2020.2 Output Improvements	12
2D Vector Barcode optimization	12
True Type font handling	12
PDF Digital Signature Improvements	12
PDF Output Improvements	13
Print Output Improvements	15
Email Output Improvements	15
Known Issues	16

OL PrintShop Mail Connect **Release Notes 2020.2**

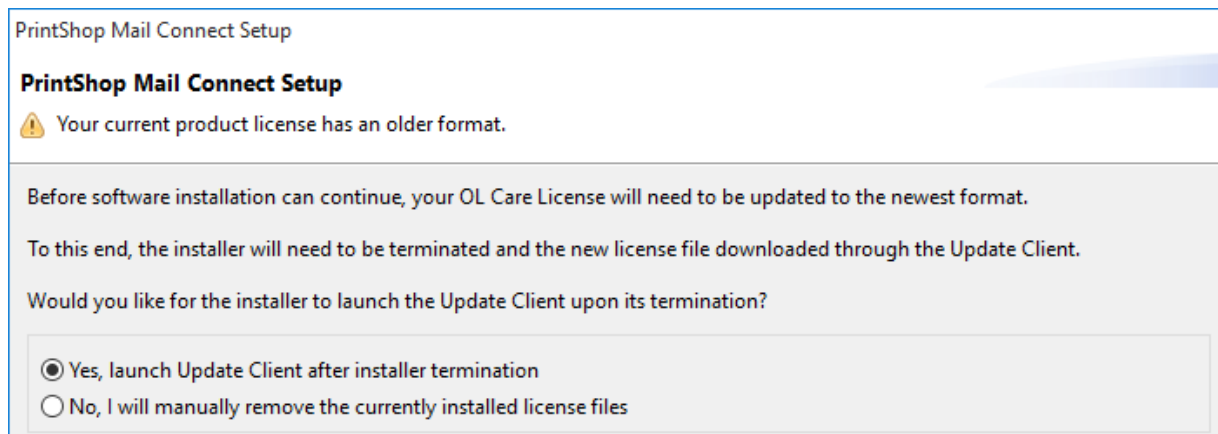
License Update Required for Upgrade to Connect 2020.x

From OL Connect 2019.1 onwards, only customers with a current OL Care subscription will be able to update Connect.

Every Connect license now contains an end date that represents the last day of OL Care coverage for each customer. Upgrades and updates of Connect will be freely available up until that end date, but will not be available thereafter, unless the OL Care period is extended.

This new licensing model requires anyone upgrading to 2020.2 from Connect versions earlier than 2019.1 to first update their OL Connect License.

A dialog box appears as part of the Connect upgrade process requesting you to do this.



It is heavily recommended that you first update the OL Update Manager, as newer versions of the Update Manager can update your OL License to the required version, then install Connect 2020.2.

For further details on how to upgrade the Update Client and update your Connect License see the [Update Manager 1.3 - Upgrade Guide](#).

If issues arise, or if you need to renew your OL Care subscription, please contact your [local Customer Care group](#).

Backup before Upgrading

It is recommended that you always backup your existing Connect preferences before upgrading to a new version. This will enable you to revert back to the previous version, in a worst case scenario in which the new version introduces issues with your existing production processes. Whilst the probability of such a worst case scenario is remote, it cannot hurt to take some simple precautions, just in case.

For instructions on how to do so, please see [how to backup an existing Connect installation](#).

Overview

This document provides an overview of the new features and enhancements in PrintShop Mail Connect 2020.2, as well as some important installation information.

Installing PrintShop Mail Connect 2020.2

- PrintShop Mail Connect is released as a 64 Bit version only.
- Full details on installing and licensing PrintShop Mail Connect can be found in the online help, which can be accessed from the software and the installer.
- Note that PrintShop Mail Connect comes with a 30 day trial license by default.

Connect installation requires Administrator rights

Please note that the PrintShop Mail Connect installation can *only be run by users who have Administrator rights*.

OL Connect 2020.2 Enhancements

OL Connect Security Improvements

- Security of the Weaver engine has been improved. (SHARED-74605)

Note

Important note for those running an Enhance config in which a JavaScript uses Java classes. JavaScripts evaluated by the Weaver engine no longer have access to the Java API by default. In order for such an Enhance config to run, any necessary Java classes must be whitelisted. For further details, please consult the [Knowledge Base](#).

- Multiple PrintShop Mail Connect dependencies updated. (SHARED-76431)
- Improved support for encrypted email output (TLS/SSL). (SHARED-76460)

Print Manager Improvements

- Deleted printers were not cleared from the system and they could not be reintroduced. This has been fixed. (SHARED-41939)
- Standalone Print Manager installation now installs the Software Activation Tool. (SHARED-70967)
- Applying a job history limit will now take immediate effect. (SHARED-77071)
- Multi-job mode is the recommended setting for IPDS and it has now been made the default. (SHARED-77176)

General Improvements

- Cleaned up the error messages returned by Connect Server. Messages will no longer be duplicated, and they will not have exception class prefixes, such as "ApplicationException:". (SHARED-70963)
- Improved Server side error handling when a template fails to load. As part of this improvement we also now log the template name when a template is loaded. (SHARED-71024)

Installer Improvements

- Add a feature to the **silent installer** of Connect to allow specifying a target folder other than the default folder, using "*install.directory=xxx*". (SHARED-75669)
- **Silent installations** can now specify connecting to a database with an encrypted connection, using "*database.usessl*". (SHARED-75671)
- **Silent installations** no longer need a connection to a database to complete. (SHARED-75775)
- In the Connect installer, the **Messenger Service** is now only installed when the Designer module is selected. (SHARED-76189/76318)
- Improvements made for installations on machines where Connect failed to uninstall correctly. (SHARED-77148)

Connect 2020.2 Designer Improvements

Improved Background Image options

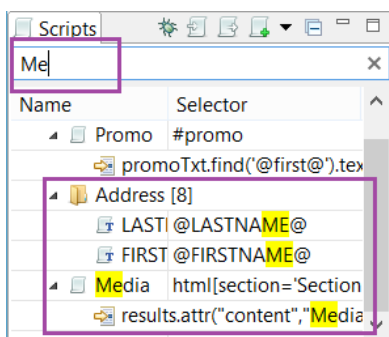
- The **Section Background** functionality has been updated to support image types other than PDF. This includes .png, .jpg and .tiff (including multi-page TIFFs) files. This is also supported via the Control Script API.(SHARED-72730)
- In versions of Connect prior to 2020.2, if a page had no content except for a linked DataMapper background, then Connect would consider it an "empty" page when determining whether or not to "*Omit Master Page Back in case of an empty back page*" (available as an option in the sheet configuration of a section). This has now been fixed in Connect 2020.2, and such pages are no longer considered empty. (SHARED-72588)

Note

This can affect the output of existing templates.

Scripting Improvements

- Added ability to quickly search through script names and contents for specified text. (SHARED-60305)



- Auto suggestion improvements made for table properties in the JavaScript editor. (SHARED-70690)
- Introduced **prev()** and **next()** functions to the "*results*" object in our scripting API. (SHARED-70764)
- Fixed a problem with **Find Previous** in the script debugger. (SHARED-76737)

- Fixed minor issues in the script folder properties dialog. (SHARED-76996)
- Added the ability to retrieve the size of a print section or medium in any script, and the ability to change the size in a control script. (SHARED-77446)
- Fixed *results.add()* functionality. (SHARED-78447)

General Designer Improvements

- When the size of a print section is changed, you can now choose to "*Update linked media*" if the media is only used by that section. If it is not, then the option will not be available. (SHARED-65278)
- Holding shift while dragging boxes now drags the box in either horizontal or vertical directions. (SHARED-72158)
- Fixed failures with the '*Get Job Data File on Submit*' feature. (SHARED-72697)
- Fixed an issue with the *Export Report* function skipping Web information for some templates. (SHARED-73640)
- *Apply* button added to **Section Properties Dialogs**, which allows applying changes without closing the dialog. Clicking the *Cancel* button reverts any previously applied changes. (SHARED-74164)
- Fixed an issue with broken PDF hyperlinks that would occur when not all child elements of a hyperlink were on the same page. (SHARED-74482)
- Fixed some issues in the formatting dialog. (SHARED-74908)
- The case sensitive option of Conditional Scripts is now also available for HTML String fields. (SHARED-74970)
- Added support for multi-selections to the **Make Conditional** feature. (SHARED-76443)
- A change introduced in 2019.2 disallowed the selection of multiple elements in the Outline tree in Designer. This has now been remedied. (SHARED-76550)
- Fixed issue with *Save As...* option sometimes being disabled. (SHARED-76740)
- Fixed an issue whereby inserting a Table into a snippet would not mark that snippet as changed. (SHARED-76875)
- Introduced a new preference to control the behaviour when dragging data fields to the main editor. By default, scripts now use a class selector. (SHARED-76934)
- Fixed an issue where pagebreaks on the same page were ignored when a pagebreak was applied to the last row of a table. (SHARED-77946)
- Fixed an issue whereby some dates in JSON data would not resolve correctly in the Designer. (SHARED-78218)

Connect 2020.2 Output Improvements

2D Vector Barcode optimization

2D Scalable Vector Graphics (SVG) barcodes now optimized. (SHARED-77579)

This optimization includes these barcode types:

- Aztec Code
- DataMatrix
- QR Code
- Variations of the above, such as GS1 DataMatrix

True Type font handling

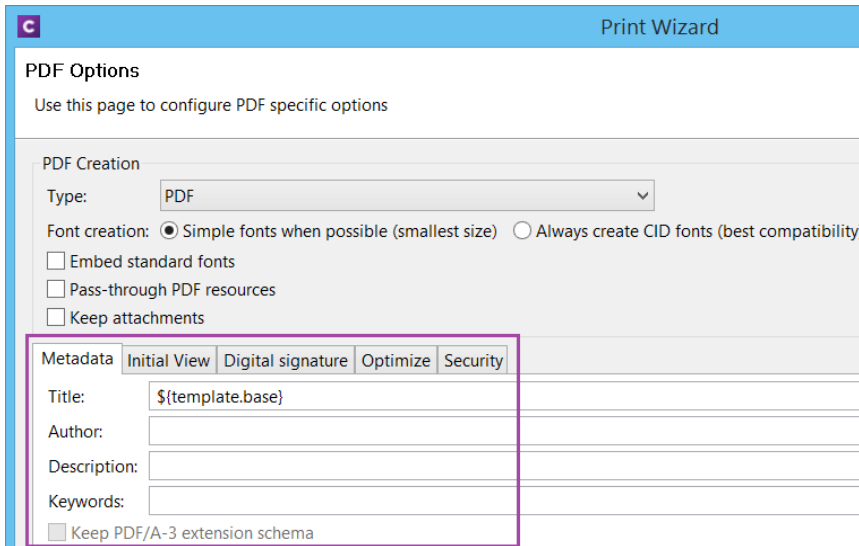
A major overhaul of TrueType font handling in the Connect output engine was conducted. This should help in reducing errors relating to both caching and parallel processing. (SHARED-61839)

PDF Digital Signature Improvements

- When creating a digitally signed PDF that includes a timestamp acquired from a timestamp server, Connect now automatically chooses the hash algorithm for the timestamp request.
SHA-256 is tried first and if the timestamp server does not support it, Connect then tries SHA-384, SHA-512 or SHA-1 (in that order), defaulting to SHA-256 if none are supported. (SHARED-77850/78085)
- Fixed an issue whereby the use of certain certificates would result in incorrectly signed PDF output. (SHARED-77915)

PDF Output Improvements

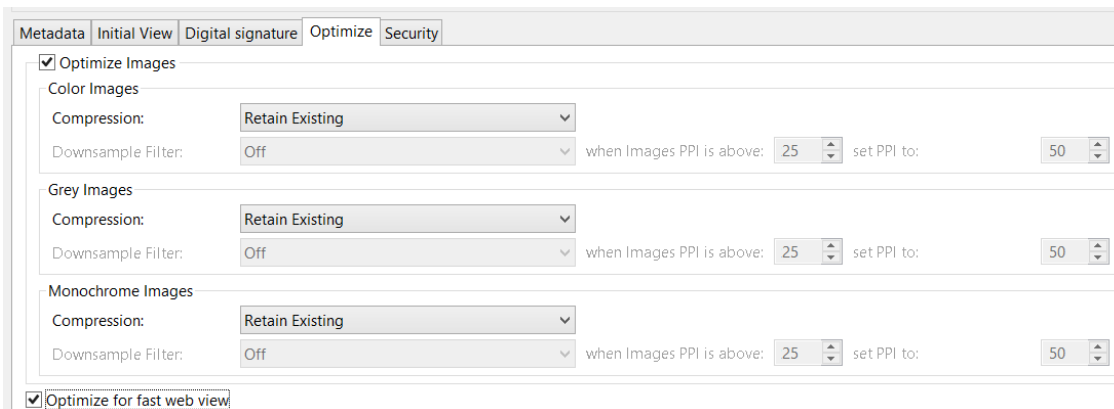
The PDF Output options have been substantially improved. This required a redesign of the **PDF Options** page, to provide all the new options on a single Wizard page. The various options have now been placed in logically distinct tabs.



The improvements include the following:

- New image optimization options added for down-sampling mono, greyscale, and color images. (SHARED-75219)

This includes a new option to "*Optimize for Fast Web View*". (SHARED-75210)



- Added PDF Security options. (SHARED-75213/75216)

The Security options mirror those available in Adobe PDF applications.

The screenshot shows the 'Security' tab in a PDF application. It features a tabbed interface with 'Metadata', 'Initial View', 'Digital signature', 'Optimize', and 'Security'. The 'Security' tab is active and contains the following options:

- Open Document
 - Password: [password field]
- Permissions
 - Allow Printing: High Quality
 - Changing the document
 - Content copying
 - Annotations and comments
 - Document assembly
 - Form filling
 - Screen readers (Accessibility)
 - Permission password: [password field]

- Improved support for processing digitally signed PDF/A-3 attachments. (SHARED-77267/78255)

You can now choose to *Keep attachments* and whether to retain PDF/A-3 extension schema metadata, in order to support production of digitally signed PDF/A-3 using that metadata.

The screenshot shows the 'PDF Options' dialog box. It includes a title bar with a 'C' icon and the text 'PDF Options'. Below the title bar, it says 'Use this page to configure PDF specific options'. The 'PDF Creation' section contains the following options:

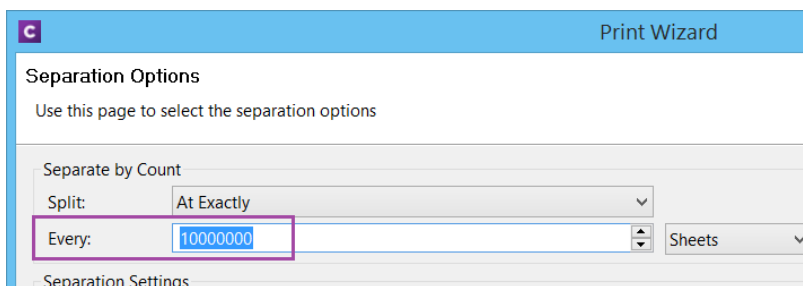
- Type: PDF
- Font creation: Simple fonts when possible (smallest size) A
- Embed standard fonts
- Pass-through PDF resources
- Keep attachments

Below the 'PDF Creation' section, there is a tabbed interface with 'Metadata', 'Initial View', 'Digital signature', 'Optimize', and 'Security'. The 'Metadata' tab is active and contains the following options:

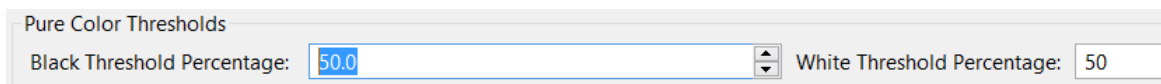
- Title: \${template.base}
- Author: [text field]
- Description: [text field]
- Keywords: [text field]
- Keep PDF/A-3 extension schema

Print Output Improvements

- Fixed issues with missing glyphs and space characters in some double-byte jobs. (SHARED-74531)
- Placeholders for missing glyphs are now output as black, allowing output to remain monochrome. (SHARED-75513)
- Fixed issues with large double-byte font jobs. (SHARED-76730)
- The upper limit for the *Separation by Count* setting in the **Separation Options** Page has been increased to 10,000,000. (SHARED-77375)



- Optimized line drawing commands to reduce size of AFPDS output. (SHARED-77622)
- Update and improve **image support** in AFP, PCL and IPDS output. (SHARED-77716/77967/77972/77993)
- Added support for **Overlays** (these will be scaled to the needed size) to AFP output. (SHARED-77768)
- *Pattern support* setup code modified in PostScript output, so it will no longer interfere with custom *Page Device setup* from printer definitions.
- Fixed a license watermark issue in PostScript output with pages containing negative font size text. (SHARED-78076)
- Increased the limit of both **Black and White thresholds** to 50% for those print output types that support it. (SHARED-78298)



Email Output Improvements

- Improved error messaging for emails containing PDF attachments containing hyperlink images. (SHARED-76540)

Known Issues

As of PrintShop Mail Connect 2018.1 the Known Issues have moved from the Release Notes to the Connect online Help.

They can be found [here](#).