

PlanetPress® Connect

OL™ Software

Release Notes

Version: 2018.1

PlanetPress® Connect

OL™ Software

Release Notes

Version 2018.1

Last Revision: 2018-04-30

Objectif Lune, Inc.

2030 Pie-IX, Suite 500

Montréal, QC, Canada, H1V 2C8

+1 (514) 875-5863

www.objectiflune.com

All trademarks displayed are the property of their respective owners.

© Objectif Lune, Inc. 1994-2018. All rights reserved. No part of this documentation may be reproduced, transmitted or distributed outside of Objectif Lune Inc. by any means whatsoever without the express written permission of Objectif Lune Inc.

Objectif Lune Inc. disclaims responsibility for any errors and omissions in this documentation and accepts no responsibility for damages arising from such inconsistencies or their further consequences of any kind. Objectif Lune Inc. reserves the right to alter the information contained in this documentation without notice.

Table of Contents

Table of Contents	4
Overview	5
Connect 2018.1 General Enhancements	7
Dynamic Print Control for PostScript printers.	7
Improved Business Graphics	9
Connect 2018.1 Designer Enhancements/Fixes	15
Connect 2018.1 DataMapping Enhancements/Fixes	22
Connect 2018.1 Output Enhancements/Fixes	25
Workflow 2018.1 Enhancements/Fixes	28
Known Issues	33

Overview

This document provides an overview of the new features and enhancements in PlanetPress Connect 2018.1 and PlanetPress Workflow 2018.1, as well as some important installation information.

Installing PlanetPress Connect 2018.1 and PlanetPress Workflow 2018.1

- PlanetPress Connect is released as a 64 Bit version only (with the exception of the Workflow, Fax, Search and Imaging modules).
- Full details on installing and licensing PlanetPress Connect and PlanetPress Workflow can be found in the online help, which can be accessed from the software and the installer.
- Note that both PlanetPress Connect and PlanetPress Workflow come with 30 day trial license by default.

Updating stand-alone Workflow Messenger installations

If Workflow Messenger was installed stand alone with no other Workflow components installed, the Update Client will be unable to find the Messenger component and thus it will not automatically update to the Workflow 2018.1 version. To get around this, download and run the Workflow 2018.1 installer manually.

Print Only Version

A Print Only license is available with version 2018.1 of PlanetPress Connect which allows legacy PlanetPress Suite 7 customers on OL Care to upgrade to Connect for a minimal fee. The license allows regular printing via the Print Wizard but runs Email and Web output in demo mode. For more information, please contact your local OL Customer Care or Sales team.

Templates Used in Workflow

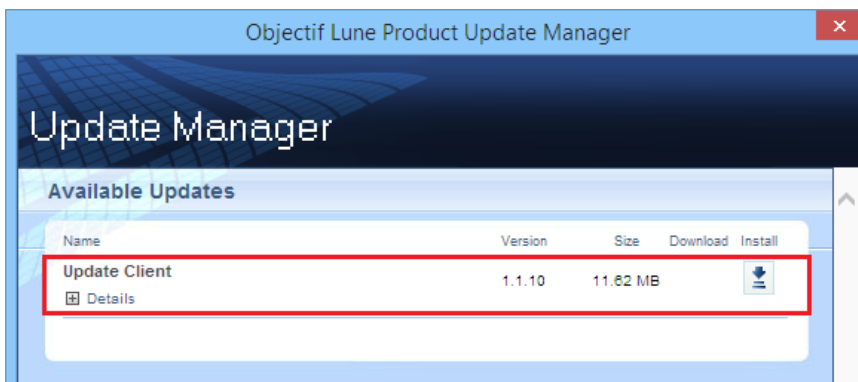
For improved performance we recommend re-saving Workflow templates set up in the previous versions to run with PlanetPress Connect 2018.1 Workflow 2018.1.

Upgrading from PlanetPress Connect 1.7

It is highly recommended that you update the **Objectif Lune Update Client** before upgrading PlanetPress Connect from version 1.7 to version 2018.1.

If you do not update the Update Client, an unexpected error might occur whilst updating Connect. This error does **not** prevent the successful upgrade of Connect to 2018.1, even though it appears as if it might have. To avoid potential confusion, we recommend that you first update the **Objectif Lune Update Client** before attempting to upgrade Connect from version 1.7 to version 2018.1.

The Update Client will show that there is an update available for itself. Simply click on the download button in the dialog to install the new version of the Update Client. Note that it is no problem in running the update while the Client itself is still open. It will automatically update itself.



Reduced Memory Version

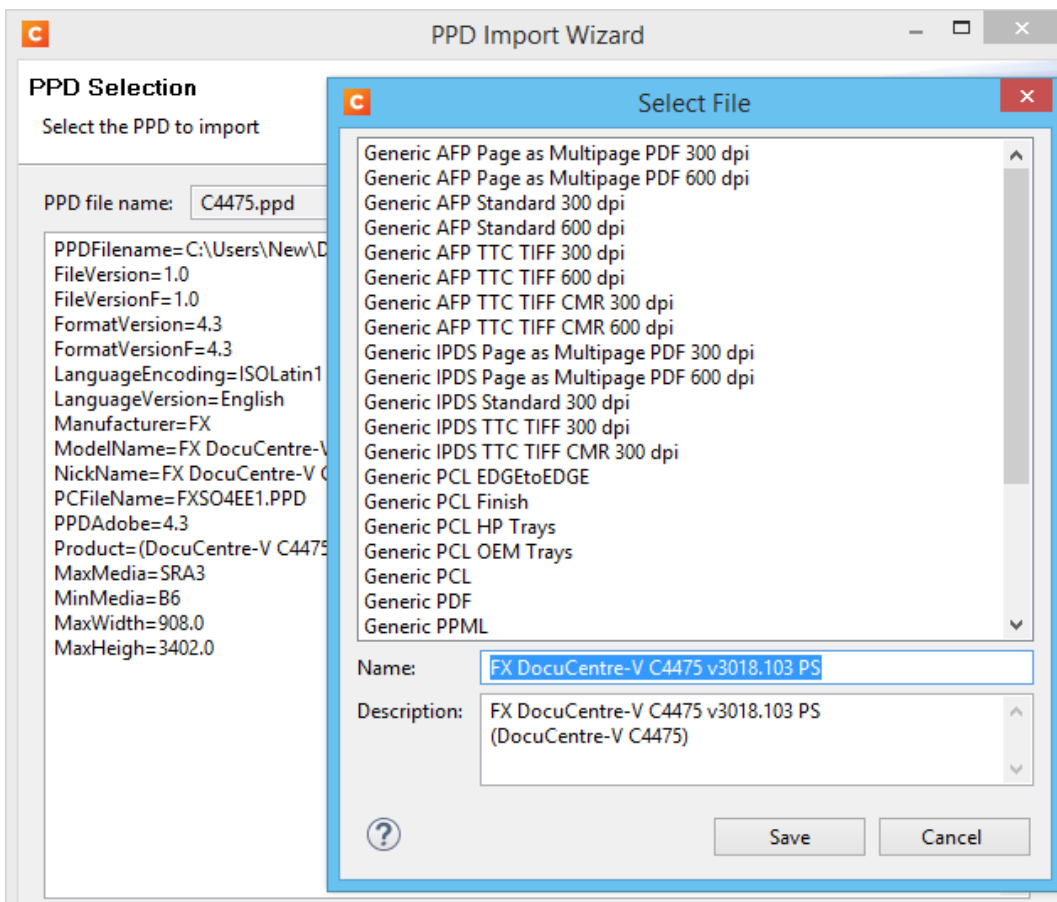
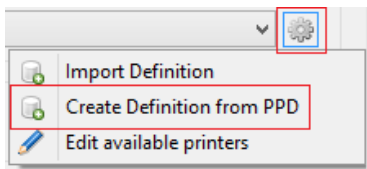
It is possible to install PlanetPress Connect on a machine with a minimum of 2 GB of RAM. The PlanetPress Connect Designer will automatically detect whether it has been installed on a machine with less than 4 GB of RAM and default to only using one internal Weaver and one internal merge engine on that system. The Server will also run using internal engines.

NOTE: This is *not* recommended for production.

Connect 2018.1 General Enhancements

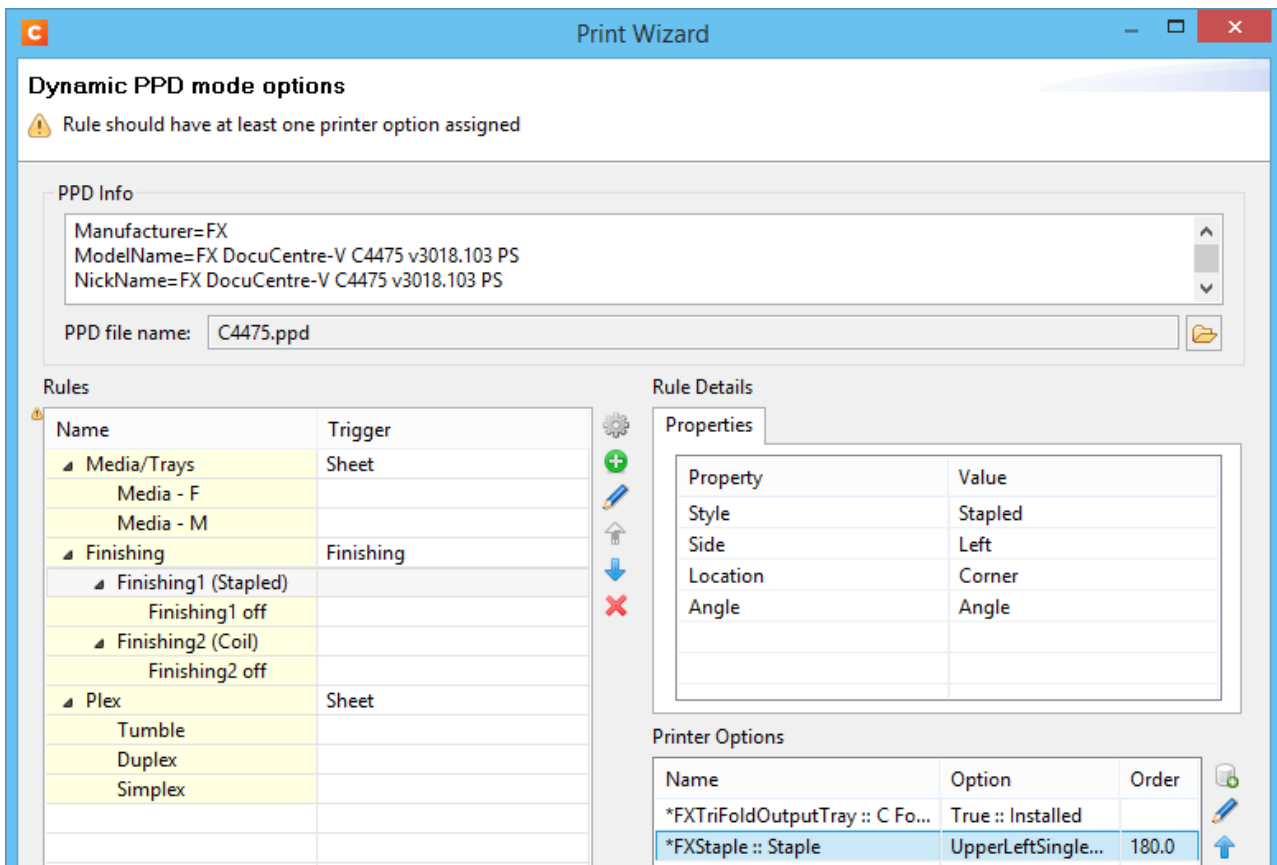
Dynamic Print Control for PostScript printers.

Connect 2018.1 introduces a new way to drive PostScript printers. Individual PostScript printers can now be selected in the Printer Wizard and Output Preset via their associated PostScript Printer Definition (PPD) files:



This allows:

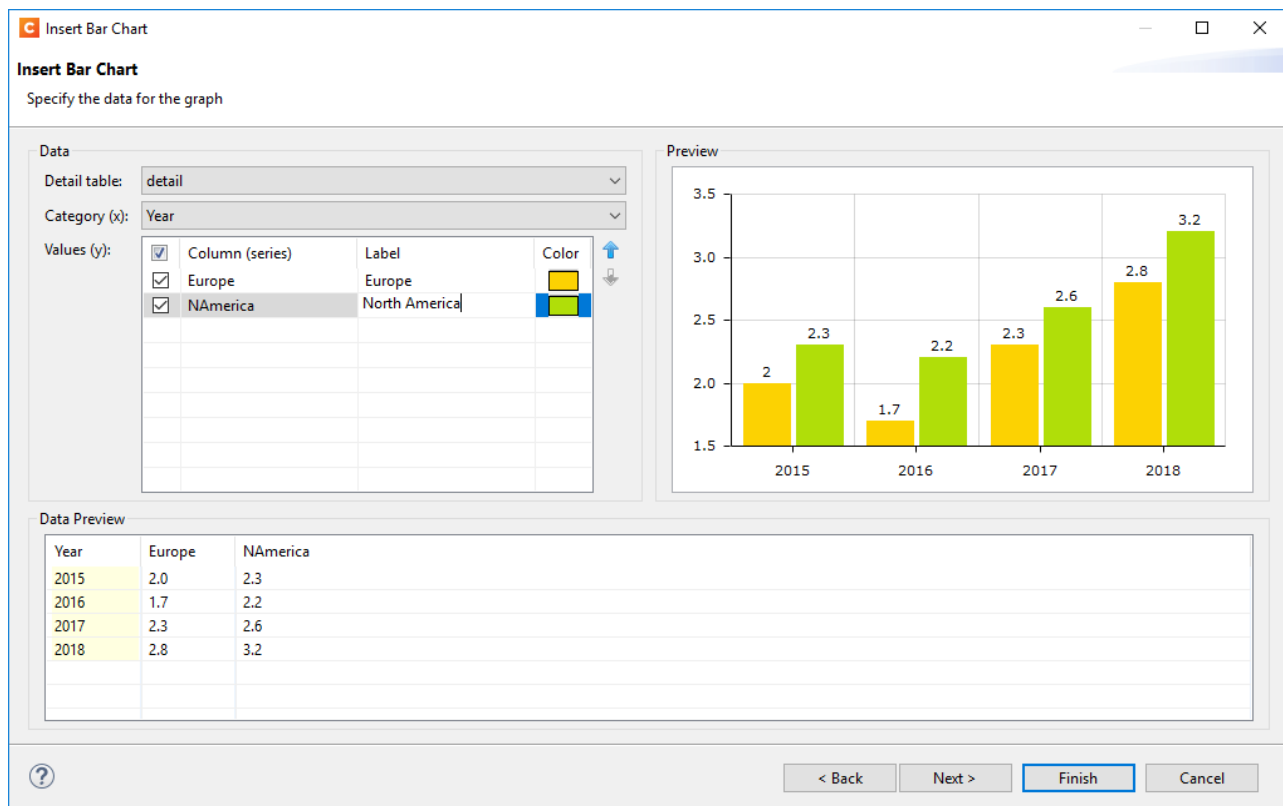
- The use of printer features that are not yet supported through the Connect user interface, such as:
 - switching between color and greyscale printing
 - selecting output bins
- Direct control of supported PostScript functionality, such as:
 - Duplex/Simplex
 - Print Media selection
 - Finishing options (e.g. Stapling, Binding and Folding)



NOTE: Case sensitivity/insensitivity has not been added as an option in this first cut of the Dynamic Print Control rules editor. This will be added in a subsequent version.

Improved Business Graphics

Business Graphics have been greatly enhanced and now display a preview of the data and graph as part of the Pie, Line and Bar chart wizards. The updated wizards simplify data selection and allows you to set and preview graph options dynamically, prior to inserting the graph object. This same functionality has been added to the scripting wizard, which can be launched from any Business Graphic script in the Scripts panel:



The Properties dialog in Connect lets you configure the graph via the User Interface and stores the configuration according to the specifications for this library. A Source tab is introduced to the Graph Properties dialog so that you can view and edit the JSON configuration.

The implementation now supports the full Line, Bar and Pie chart API of the underlying amChart library. This allows you to enable amCharts graph features that are not available in the user interface of Connect.

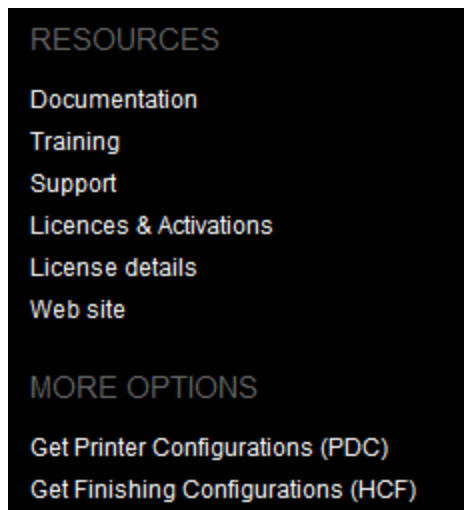
It is even possible to copy/paste Line, Bar and Pie chart configuration settings from the online amChart Live Editor directly to this tab.

Refer to the [amChart documentation](#) for more information on the numerous configuration options available.

NOTE: As a consequence of changes in both the user interface and the underlying technology, Business Graphics made with a version prior to PlanetPress Connect 2018.1 may not display correctly when opened in version 2018.1. See the ***Business Graphics: Backwards Compatibility*** section on [this](#) page for full details.

Welcome Screen improvements

The Welcome screen layout has been redesigned and streamlined to simplify navigation and improve access to Connect resources, including current license details. (SHARED-61377)



Connect and Workflow version numbering changed

We have changed the version numbering system. From here on in the version will be year based, with the second number showing the major release and subsequent numbers showing minor releases. The intention is to have two major releases a year, with minor releases in between to address specific customer issues.

2018.1 is the first of the two planned major releases for 2018. The second will have the version number 2018.2. Any minor releases between the two major releases will be labelled 2018.1.n, where "n" is a numeric counter. Thus the first minor release would be 2018.1.1 and the second would be 2018.1.2, and so forth. (SHARED-60069)

Windows Server 2016 now officially supported

As of PlanetPress Connect 2018.1, Connect is now officially supported under Windows Server 2016.

NOTE: The Objectif Lune Inc. **Update Client** application might be blocked by enhanced security settings in Windows Server 2016. To fix this, add <http://updates.ca.objectiflune.com> to the list of trusted web sites on that machine, or lower the internet access rules.

Improved Previews

The Preview now smooths text, images and line art when rasterizing a page. This improves the quality of the resulting image, especially when rasterizing a page with lower resolutions. This applies to both Designer and DataMapper Previews. (SHARED-59724)

Localization improvements

Improved localization and translations throughout PlanetPress Connect and Workflow.

Improved Data handling:

- Improvements to the internal handling of data field names to support data fields that do not conform to a standard SQL query syntax. This means that fields with characters such as #, \$, % and ^ can now be processed. (SHARED-59126)
- Performance improvements made to the Connect MySQL back-end database, through changes made to internal database indexing. (SHARED-59393)

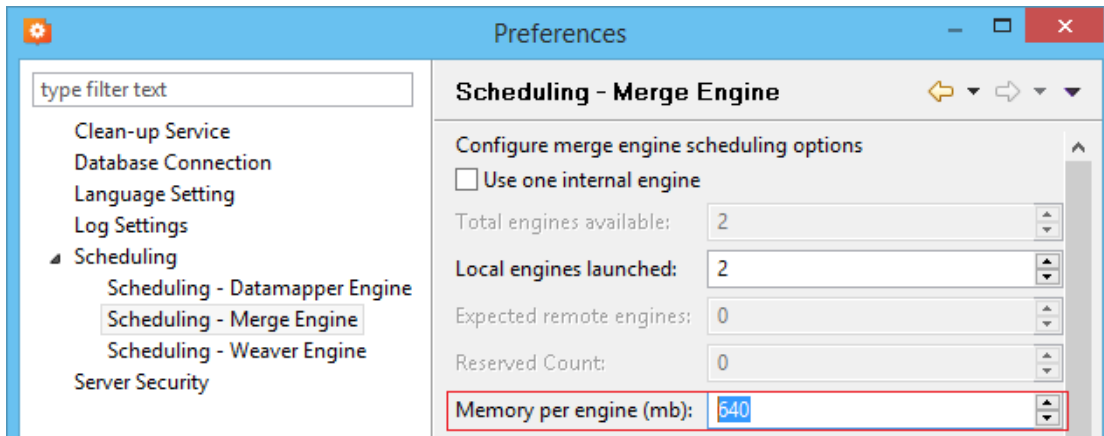
Improved support for Microsoft SQL Server back-end

A number of enhancements have been made to improve the performance and support for Microsoft SQL Server (MS-SQL) as the Connect back-end database. These include:

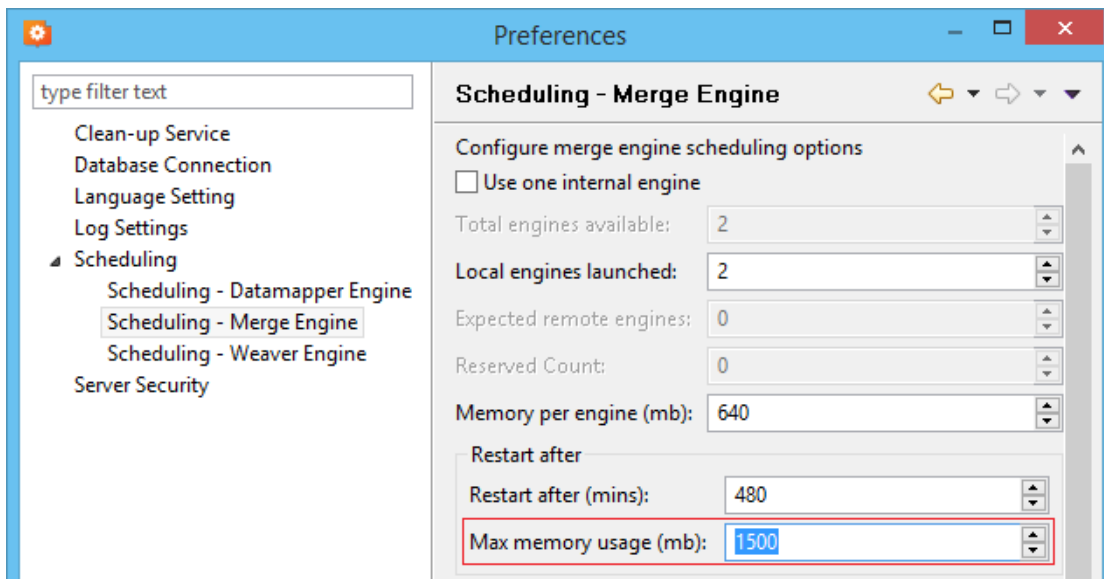
- Database Table Partitioning, which significantly speeds up the clean-up service. (SHARED-59589)
- Internal Connect SQL statements re-factored to work more efficiently with MS-SQL. This particularly improves support for large jobs. (SHARED-57575)
- MS-SQL driver updated. (SHARED-60464)

New Preferences options:

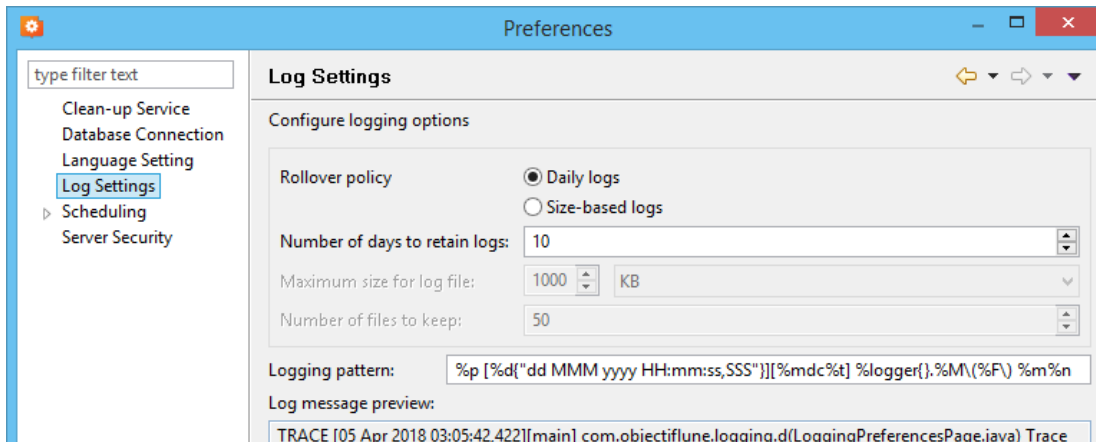
- Scheduling preferences for Merge and Weaver engines now include a preference for specifying the memory (RAM) to be used per engine. (SHARED-44547)



- Merge and Weaver engine scheduling preferences now include an option for scheduling an engine restart if the total amount of memory (RAM) used by the engine exceeds the specified entry. This is in addition to the time limit setting. (SHARED-63101)



- Log file settings can now be adjusted within the Designer and Server Configuration preference windows. The settings are global to all Connect applications. Settings include log file rollover options (time or size based), and the format of the log messages generated. (SHARED-60043)



Installer Improvements:

- Prerequisites now installed silently when installing Connect using silent installer. (SHARED-59286)
- Messaging has been improved for when the Connect installer cannot safely commence un-installation. (SHARED-59565)
- Installation folders cleaned up. Those that were no longer necessary have been removed, and others have been renamed or moved to make them more logically consistent.

Back-end Improvements:

- Better handling of non-responsive engines. (SHARED-55305)
- Improved response to Merge engine failures. (SHARED-46180)
- Reduced memory footprint when running the same job multiple times. (SHARED-57905)

Logging Improvements:

- Improvements made to Weaver logging for small output jobs and improved throughput. (SHARED-58570)
- Connect version number added to certain log files, to streamline issue identification and confirmation. (SHARED-60256)

- When using the REST API to execute a +PReS Enhance configuration that logged to a custom log file, the log file could not be deleted at the end of the execution. Repeating the execution of the +PReS Enhance configuration also caused unreadable NUL characters to appear in the log file and log messages were appended to it. This has now been fixed and the custom log file now closes at the completion of the Enhance configuration execution. (SHARED-59656)
- Logging infrastructure has been updated. Logging can now be configured via an XML file located in the user's home directory under *Connect\workspace\configurations\logback.xml*. (SHARED-61913)

Connect 2018.1 Designer Enhancements/Fixes

Updated internal browser component

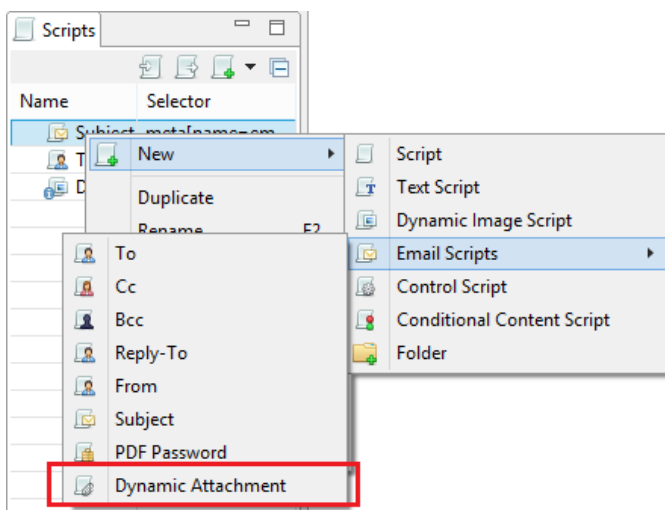
The browser component (Mozilla Gecko) used in the WYSIWYG editor of the Designer has been updated. This allows you to use new CSS properties like flexbox. Connect 2018.1 now uses Mozilla Gecko 38 as its HTML rendering engine. (SHARED-42286)

NOTE: The update to the Mozilla Gecko engine could lead to increased output file sizes for some PCL jobs. This is generally not a cause for concern, however there might be some associated increase in processing times, as well as some minor differences in the output. For example, table line widths and font spacings might differ slightly (particularly for SMALL CAPS text), which could lead to slightly different word-wrapping in some cases.

Improved attachment options for Email output

New features have been introduced to simplify the setting of email attachments within Designer.

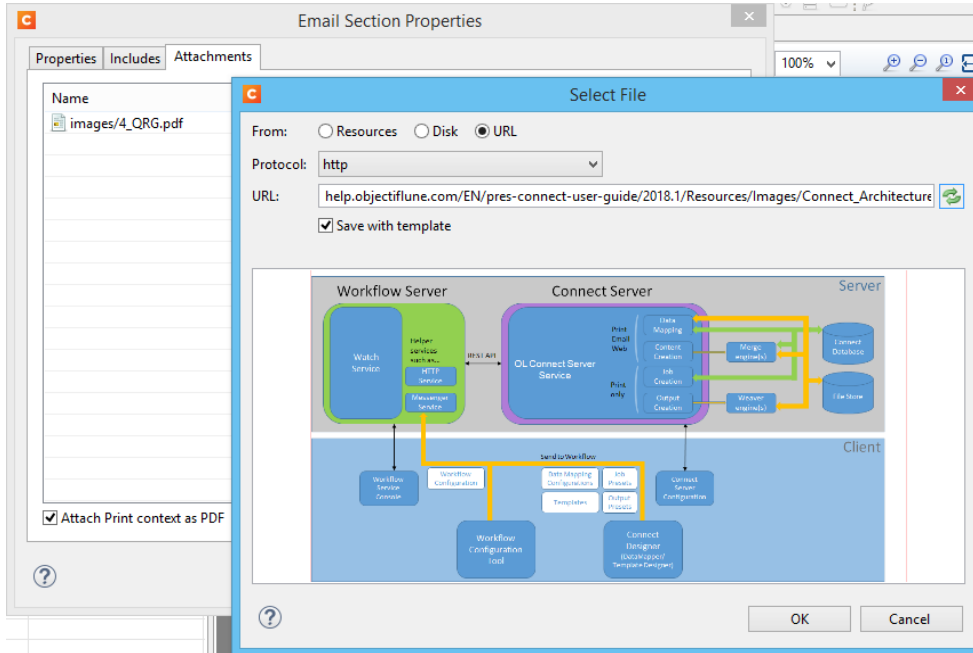
- **Dynamic file attachments** can be added to email sections via a new *Email Scripts* option. (SHARED-56602)



This Script wizard allows you to construct a selection using the Prefix, Field and Suffix

values to dynamically specify a file from disk or a remote location.

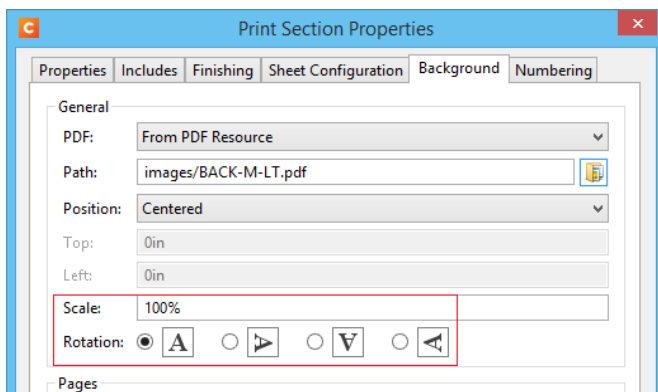
- **Static file attachments** can be added to email sections via the *Attachments* tab in the *Email Section Properties* dialog. (SHARED-28343)



You can also select whether the Print Context should be added as a PDF attachment or not, using the "**Attach Print context as PDF**" check-box.

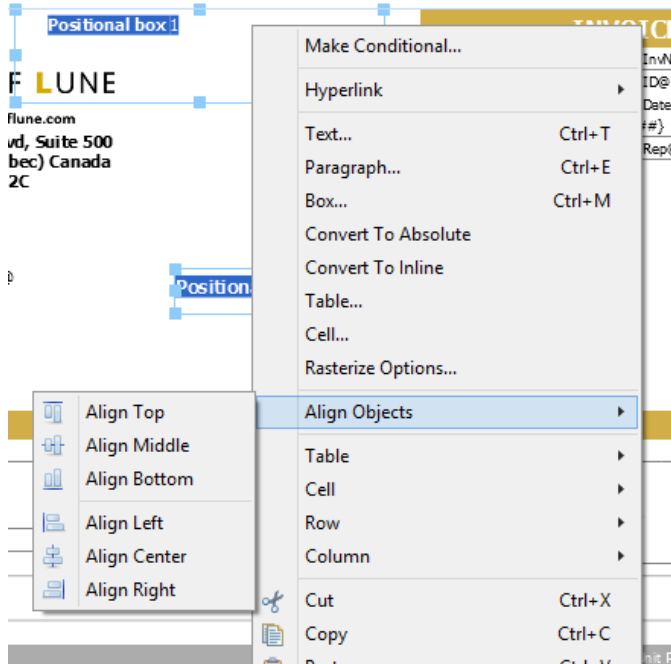
Rotate and Scale Background Images

Section Background images can now be rotated or scaled, either via the Section Properties dialog or via a control script. (SHARED-60244/60855)



Align multiple objects

You can now select and align several absolute positioned objects at once with the new **Align Objects** context menu. (SHARED-60263)



Preflight improvements

Double-clicking a script warning or error in the Preflight report will now open the offending script within a script editor. (SHARED-60273)

Improved language support

Disable certain **CTRL + ALT + <?>** shortcuts in source editors, including source tab, HTML snippet editors and CSS editors.

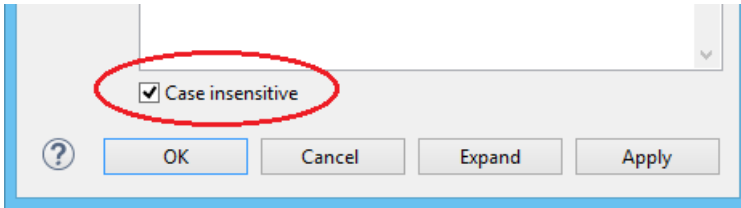
This allows adding square brackets in a source editor when using a French keyboard layout shortcut (**CTRL + ALT + [** or **CTRL + ALT +]**), as well as semi-colons (**CTRL + ALT + ;**) on Hungarian keyboard layouts. (SHARED-60308/62056)

Data Model pane improvements

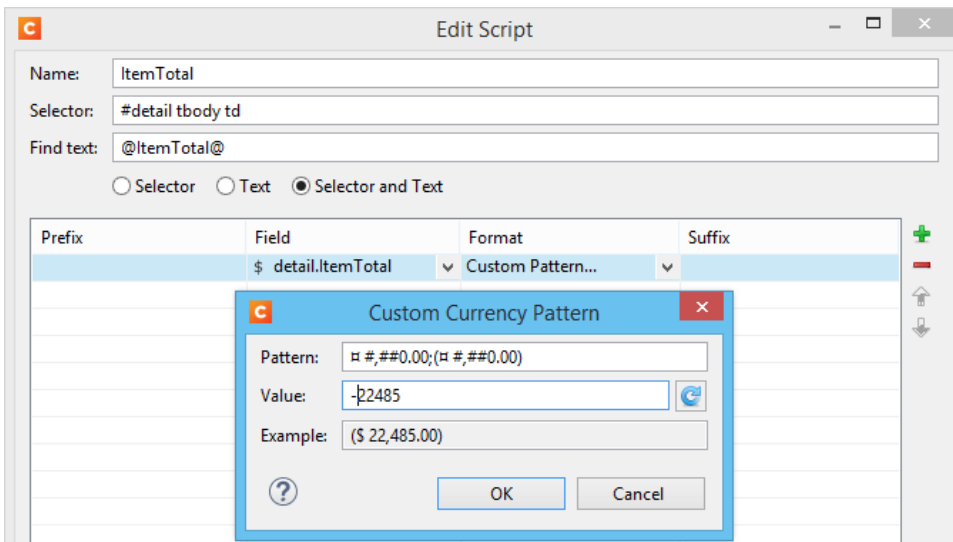
The context menu in the Data Model view now allows you to modify the data model while the template editor is active. (SHARED-60234)

Scripting improvements:

- Option added to allow setting Case Sensitivity on or off for any conditional string comparison scripts. (SHARED-56535)



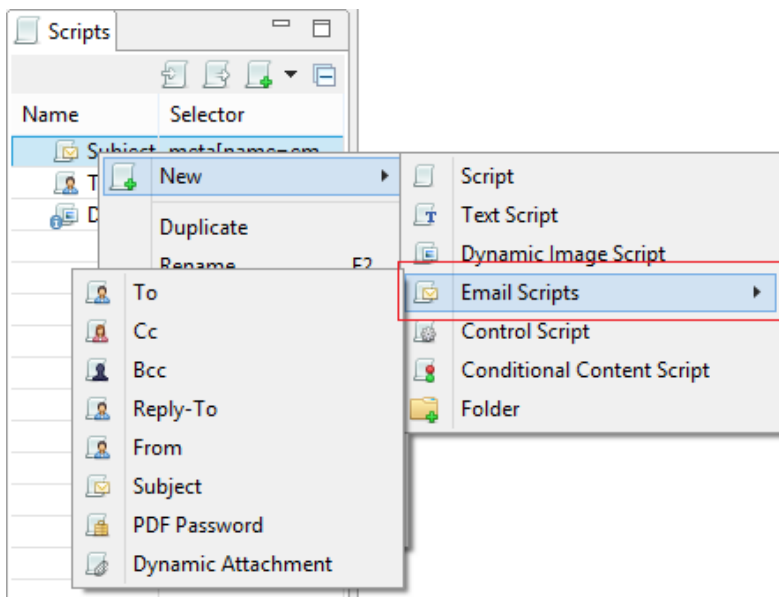
- Improved support in Text Script Wizards for the custom formatting of Date, Currency, and Numeric fields. (SHARED-60261)



The above example shows a custom pattern for a currency value, containing a sub-pattern for negative values. How the result would appear is shown in the *Example* field. Documentation for these patterns can be found on the following pages:

- [Date and Time patterns in Connect](#)
- [Number patterns in Connect](#)
- You can now inspect Scripted elements in the Outline tree when in Preview mode. (SHARED-60231)
- New sub-folders now inherit the same execution scope as their parent. (SHARED-56964)
- You can now drag and drop a data field to a script folder even when a script of that name already exists within a different folder (or root) of the Scripts panel. (SHARED-57027)

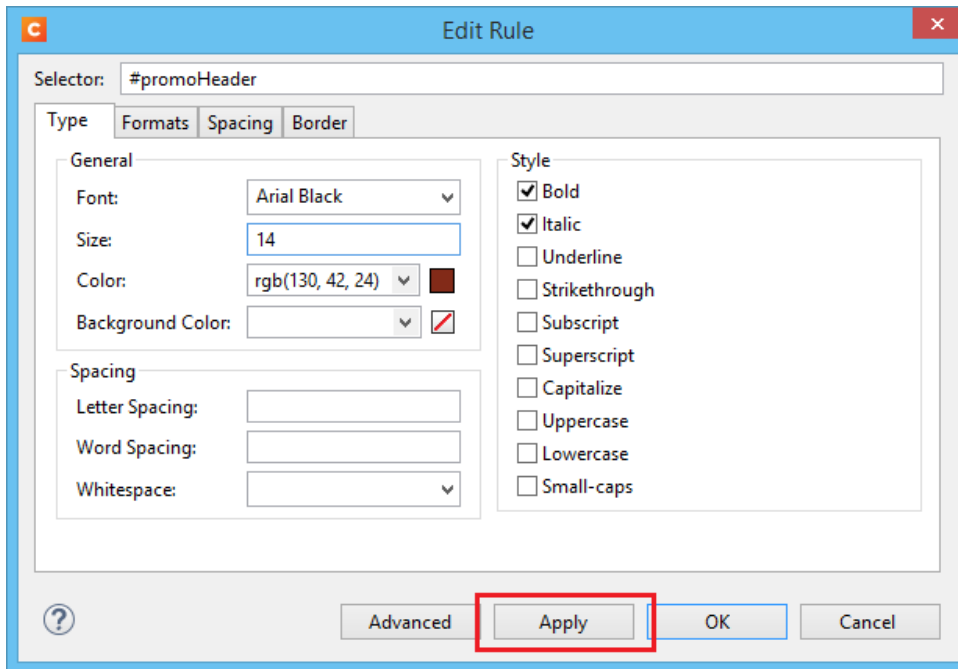
- Improved Email Context script selection. All the Email Context scripts are now bundled together in their own sub-menu. (SHARED-56602)



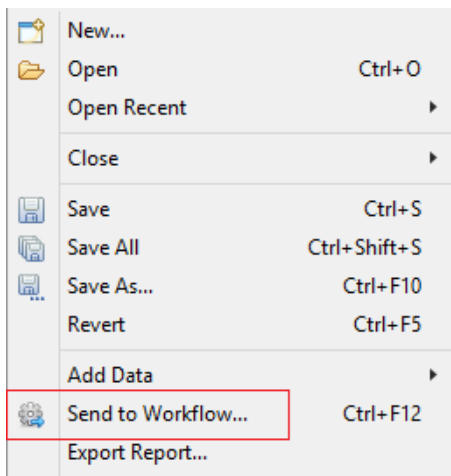
- Improvements made to the default data field selection logic when adding new Text Scripts. (SHARED-57286)
- Double clicking a script in the Script Panel with the script editor open will now prompt you to save your changes. (SHARED-47908)
- Any open Script Editor will now close when another template is opened. (SHARED-32289)

General Designer improvements:

- Style rule changes can now be saved and applied instantly from within the Edit Rule dialog, via a new Apply button. (SHARED-58595)



- A new **Send to Workflow** icon has been added to Designer. It can be found as a new option in the icon toolbar and has also been added to the existing File menu option. (SHARED-59322)



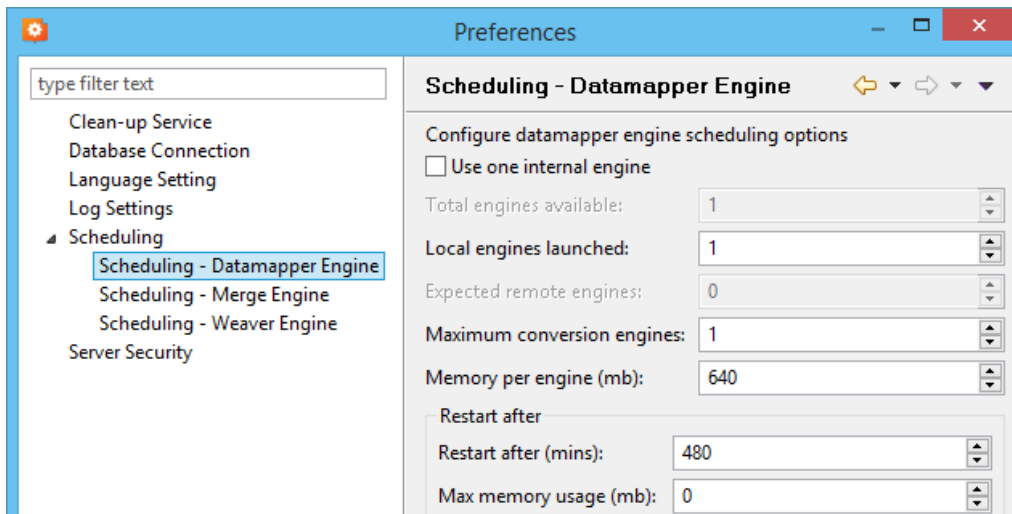
- You can now copy/paste or drag/drop images files from the file system or *Images* folder to the *Stylesheets* folder. (SHARED-49551)

- The **New Email** and **New Print** template wizards now open using the last used Template settings. Selections such as page size, page margins and the like will be retained. (SHARED-33982)
- Improved **element insertion** rules, to make context menus and dialogs more accurate. For example the option to add Absolute elements in emails has been removed, as the email format does not support this functionality. (SHARED-60947/61117)
- Improved support for **remote images** (http-based URLs). (SHARED-58592)
- The *resource()* script function has been extended to return information about PDF permissions. (SHARED-58026)
- The attributes panel now has a "*Reset Size*" button that reverts a resized image back to its the original size. (SHARED-57025)
- You can now clear the "*recent files*" list via new **Window > Clear Recent Files Lists** menu option. (SHARED-42712)
- You can now toggle between the front and back of the selected Media entry in Master Pages. (SHARED-62038)
- You can now use cursor keys to navigate after <div> or <article> elements that are the last element in the <body>. (SHARED-41710)
- Dialog box resizing improved and made more consistent. (SHARED-16164)

Connect 2018.1 DataMapping Enhancements/Fixes

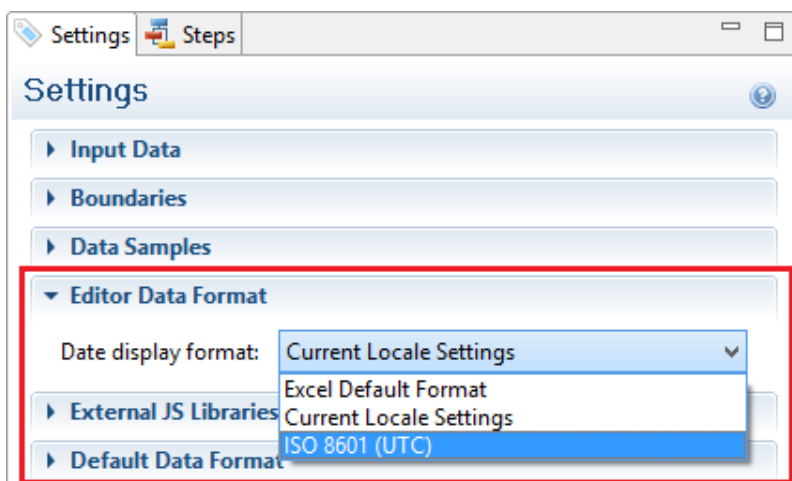
Standalone DataMapper Engine

The DataMapper Engine has been stripped into a separate stand-alone server, to make it more efficient and configurable now as well as more adaptable in the future. The new DataMapper Engine options can be set via the **Connect Server Configuration** tool. (SHARED-59696)



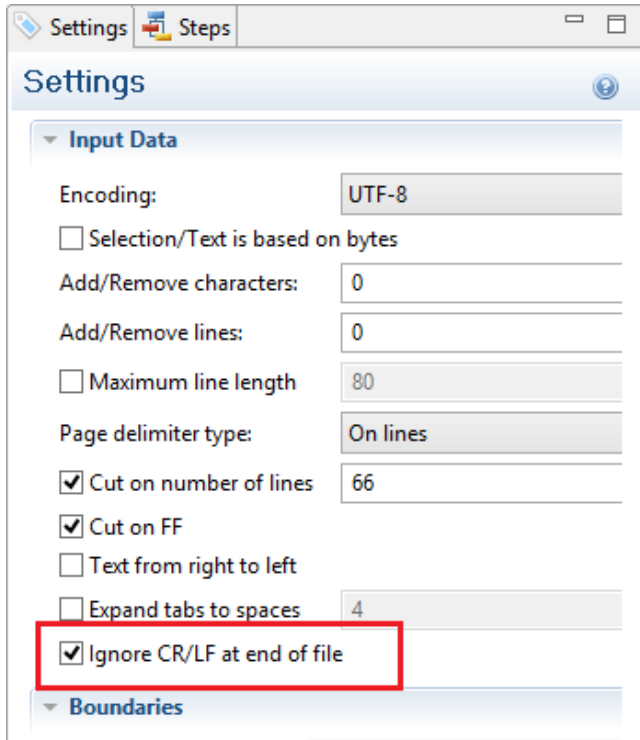
Improved date field support for Excel datafiles

Formatting for date fields in Excel data files has been improved. (SHARED-60041)



Ignore CR/LF in Text records

New option added to allow ignore end-of-line CR/LF characters in Text datafiles. This prevents empty trailing records being added to the dataset. (SHARED-62139)



Create unique GUID in scripts

New DataMapper Script function `createGUID()` added to the Boundaries and Steps scripts. This function returns a unique GUID. (SHARED-61246)

New "No Data" warning

A visual warning has been added to the DataMapper when an open table contains no data. (SHARED-2716)

General DataMapping improvements:

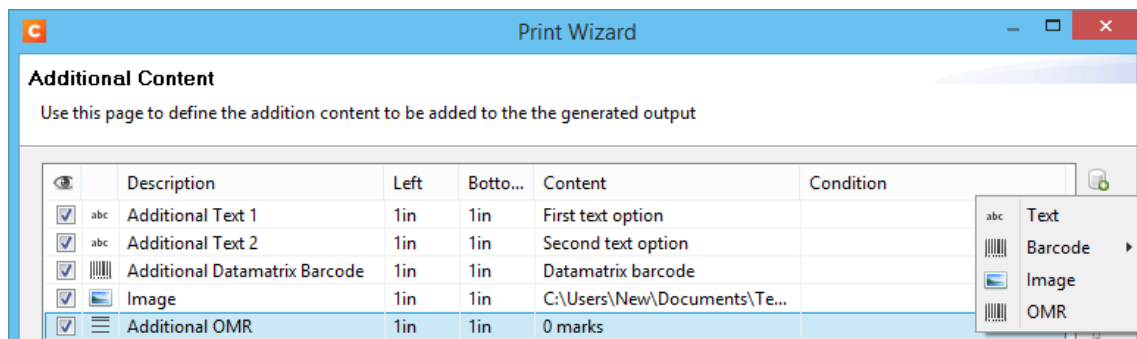
- Improved support for transactional data records containing thousands of transactional items per record. (SHARED-50430)
- Data records can now be duplicated. To support this, a new **record.copies** property has been added to the record object. (SHARED-53766)

- It is now possible to add a CSV input file containing only a single column. (SHARED-59814)
- Improved DataMapping performance for XML files containing large numbers of end-of-line CR/LF characters. (SHARED-60940)

Connect 2018.1 Output Enhancements/Fixes

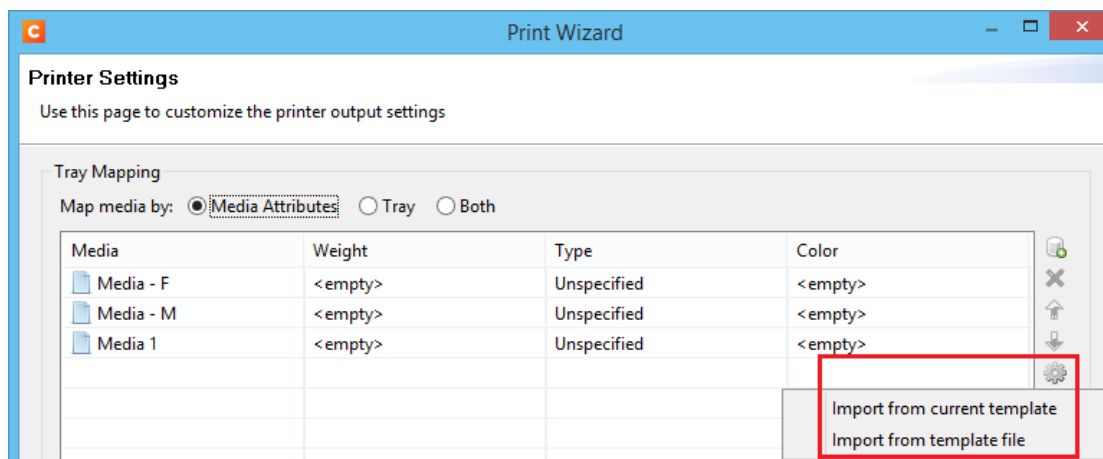
Redesigned Additional Content page in the Print Wizard

The Additional Content page in the Print Wizard has been re-designed to present all the Additional Content entries in a single table, simplifying Additional Content management. (SHARED-56444)



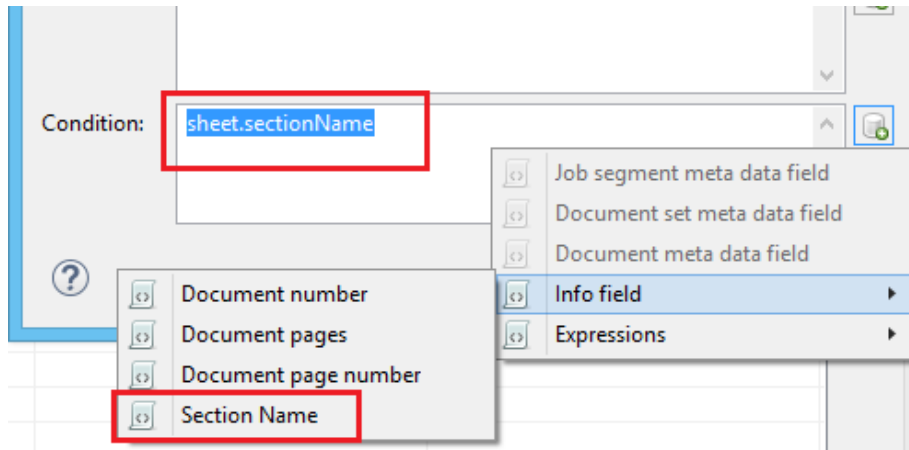
Improved Tray Mapping in Printer Wizard

Media attributes can now be imported directly into the output config tray mapping from either the currently open template or from a saved template file. (SHARED-48818)



New Conditional option

During Output Creation, it is now possible to determine the template section to which a sheet belongs to using the new `sheet.sectionName` property. This property has been made available as a conditional option in the Printer Wizard. (SHARED-61275)



NOTE: The introduction of this property introduces a slight risk of compatibility issues, but only for cases where an existing custom printer definition or Enhance configuration already has a user-defined property with the *exact same name*.

Font handling made more robust

Connect will now generate **bold**, *italic* and ***bold-italic*** variations of most fonts on machines that do not have those variants of the font installed. (SHARED-59975/60670)

Improved PDF throughput processing:

- Improvements were made to the processing and optimization of barcodes in imported PDFs. This has resulted in speed improvements when processing certain PDF files for print output. This is particularly the case for PCL output. (SHARED-58782/59955)
- Enhancements made in the caching of PDF input files has led to speed improvements when processing large PDF inputs. (SHARED-58503)
- Improved memory usage with PDF pass-through. (SHARED-58782)

Print Output Improvements:

- Transparency support for PDF output. (SHARED-61492)
- Soft mask improvement in PDF. The soft mask is now set by the CTM ("Current Transformation Matrix") when the soft mask is created. (SHARED-58893)
- Improvements made to generic PCL output for some printers. (SHARED-60019)
- Booklet Impositioning for mix-plex jobs has been improved, reducing the likelihood of empty pages. (SHARED-60054)

Workflow 2018.1 Enhancements/Fixes

Improved Performance

The performance of the **Execute Data Mapping** and **Retrieve Items** tasks have been improved when setting the options to "Output Records to Metadata". (SHARED-56678)

NOTE: The performance update to **Retrieve Item** is currently only implemented for Data Records. The other entity types will be added in a subsequent release.

Retrieve Items by their IDs

Option added to the **Retrieve Items** task to support retrieving items via their associated entity IDs. (SHARED-51101)

Entity to retrieve	Retrieve by
Content Set	Content Set id(s)
Job	Job id(s)

New option in Digital Action and Output Image tasks

A checkbox has been added to allow the PDI FormName to be replaced by the *Title* defined in the Job Options tab when the input file type is PDF/VT. (SHARED-61165)

Save a copy

Folder and filename

Add Automatic Extension

Add PDF to PlanetPress Search database

Use Title as FormName for PDF/VT

Index

New option in Create Web Content task

An option to "Do not alter HTML" was added to the **Create Web Content** task. When selected the task shall not add the BASE element to the HTML as it usually does, nor shall it modify the local anchors with JavaScript code. (SHARED-62521)

The screenshot shows the 'Create Web Content Properties' dialog box. It has a title bar 'Create Web Content Properties' and a subtitle 'Create Web Content based on a given Record and a Template'. Below the subtitle are tabs for 'General', 'OL Connect Proxy', 'On Error', and 'Comments'. The 'General' tab is active. Under the 'Template' section, there is a table with two columns: 'File Name' and 'Description'. The first row has '‰o' in the 'File Name' column and '*Dynamic description' in the 'Description' column. Below the table, there are several fields: 'Section' (a dropdown menu), 'Data Source' (a dropdown menu with 'Record ID' selected), and 'Record ID' (a text input field containing 'GetMeta[_vger_record_id[0], 10, Job.Group[0].Document[0]]'). There are two checkboxes: 'Embed all resources' and 'Do not alter HTML'. The 'Do not alter HTML' checkbox is highlighted with a red box.

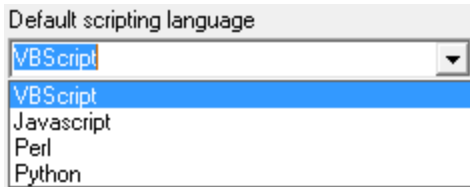
New option in FTP Input task

An option to "Search in subfolders" has been added to the **FTP Input** task. (SHARED-54684)

The screenshot shows the 'File options' dialog box. It has a title bar 'File options'. Below the title bar, there are three fields: 'Directory (optional)' (a text input field), 'Mask' (a text input field containing 'sad'), and 'Search in subfolders' (a checkbox). The 'Search in subfolders' checkbox is highlighted with a red box.

New Workflow Preferences:

- You can now set the default Workflow scripting language. This defaults to VB Script for backwards comparability. (SHARED-60000)

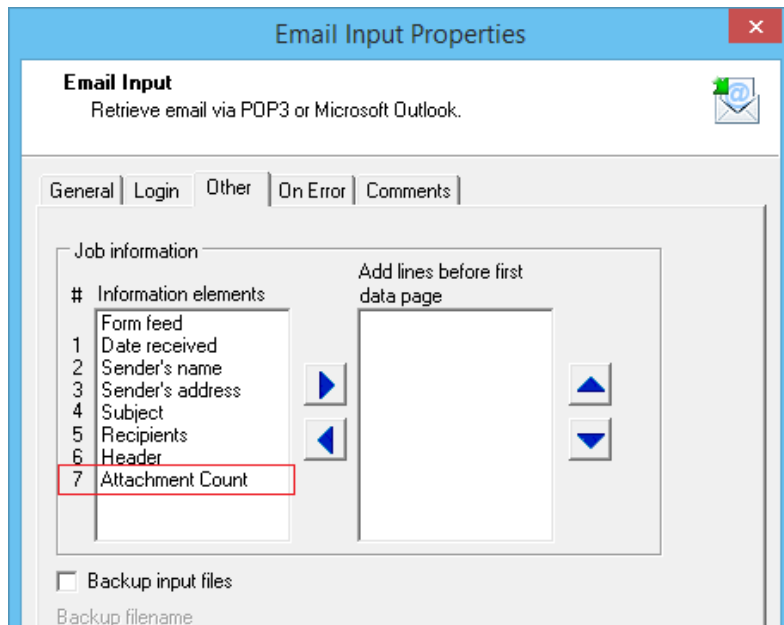


- Improved PHP like Array options are now available for the **HTTP Service** plug-in. (SHARED-50770)



Number of email attachments now available

The number of email attachments is now available to the **Email Input** task. (SHARED-59294)



GUID variable introduced

A new **%U** system variable has been introduced to support full GUID values. This new variable is an addition to the pre-existing **%u** (a unique 15-char string). The new **%U** system variable is available in the same locations that the **%u** system variable is, including in the context menus. (SHARED-61244)

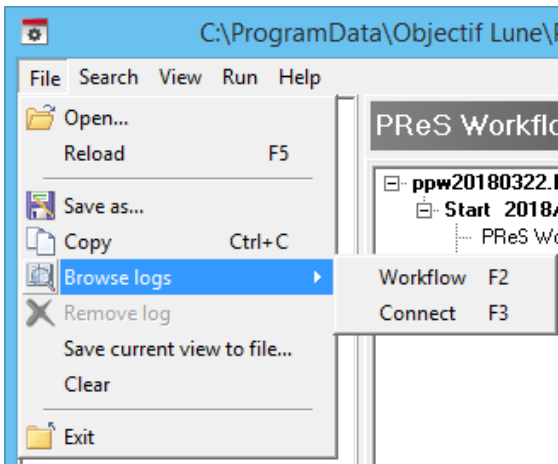
Improved support for special characters

When retrieving data/strings from the data repository manager through the scripting API command *GetKeySets()*, special characters like 'é è ê ë æ' got corrupted in the output.

GetKeySets() now converts the results coming from the Repository from UTF8 to ANSI for compatibility with scripting. *GetKeySetsW()* can still be used to obtain the UTF8 value without conversion. (SHARED-62189)

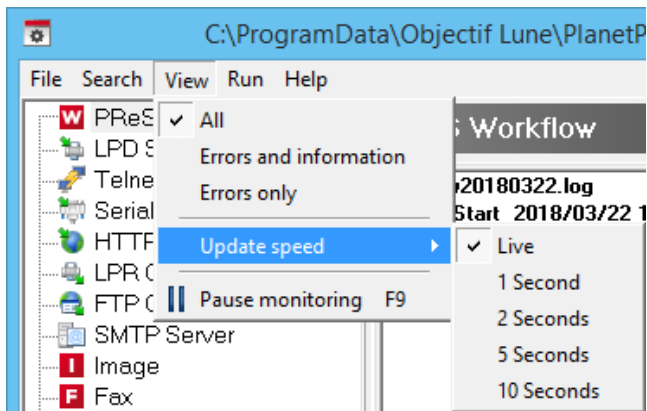
Workflow Service Console improvements:

- Option added to browse either the Connect or Workflow logs for the current user on this machine. (SHARED-60021)



- Text can now be copied from the service console logs using the new **File>Copy** menu option. (SHARED-60025)

- Options for setting the logging refresh speed have been added. (SHARED-60029)



Workflow Data Repository Manager improvements:

- Improved Data Repository Key Set editor. (SHARED-59137/60165)
- Improved speed when writing to a Data Repository. (SHARED-51564)
- Instead of throwing an error the `lookup()` function now returns `NODATA` when an invalid group and/or key is passed. (SHARED-48508)
- A new `ConnectionString` property was added to the Repository API to allow the selection of a custom Data Repository. (SHARED-59335)
- The Repository API `GetKeySets()` function can now select *all* keys. (SHARED-47769)

General Workflow fixes and improvements:

- Special characters which may conflict when present in a URL (such as '@' or '/') can now be used in the "Server Connection Settings" username and password. (SHARED-58820)
- Improved logging of REST API calls to Connect. (SHARED-60241)
- Workflow can now use Connect Output Presets that use fonts for additional text (and also for human readable text of barcodes), provided that each font used is installed on every machine involved in the output creation. (SHARED-61903)
- Plugins that retrieve data using the `region(...)` command would sometimes fail intermittently. These failures have now been fixed. (SHARED-61345)
- In Alambic-intensive Workflow configurations instances of `ppalmbic.exe` would sometimes remain open even though they should have stopped. This has now been fixed, and the `ppalmbic.exe` instances close as expected. (SHARED-59435)
- Fixed issue whereby Workflow would stop processing PostScript and PDF jobs on some *Windows 10 Fall Creators Update* machines. (SHARED-62516)

Known Issues

As of PlanetPress Connect 2018.1 the Known Issues have moved from the Release Notes to the Connect online Help.

They can be found [here](#).

