

PlanetPress® Connect

OL™ Software

Version 1.2.1
Release Notes



**PrintShop Mail
Connect**

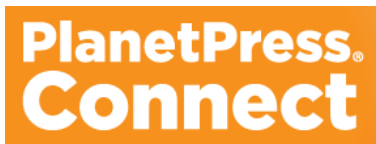
**PlanetPress®
Connect**

**PReS®
Connect**

© 2015 Objectif Lune Inc. All rights reserved. No part of this documentation may be reproduced, transmitted or distributed outside of Objectif Lune or PrintSoft by any means whatsoever without the express written permission of Objectif Lune Inc. Objectif Lune Inc. disclaims responsibility for any errors and omissions in this documentation and accepts no responsibility for damages arising from such inconsistencies or their further consequences of any kind. Objectif Lune Inc reserves the right to alter the information contained in this documentation without notice.

Table of Contents:

Overview	4
Connect 1.2.1: New Features and Enhancements	5
1. Performance Improvements	5
2. Stability Improvements	5
3. Simplified logging	5
4. OMR barcode implementation improved	5
Connect 1.2.1: General Fixes.....	6
Connect 1.2: New Features and Enhancements	7
1. Significant Performance Improvements.....	7
2. New Welcome Screen	7
3. Responsive Design View	8
4. New Postcard Template Wizard	8
5. Capture OnTheGo Starter Templates	9
6. Other Capture OnTheGo Enhancements.....	10
7. Colour Selection Dialog	10
8. Support for MaxiCode Barcodes	11
9. Other Barcode Improvements.....	11
10. Guidelines in the Designer	12
11. Coverpage Support for Booklets	13
12. Direct Access to Printer Definitions in Print Wizard	13
13. Support for Dynamic Sheet and Page Counters in Pagination	14
14. Support for Box Sizes in PDF.....	14
15. Support for JSON Snippets	14
16. Support for External Hyperlinks in PDF's.....	14
17. New Compression Options for PDF's in Email Output	14
Connect 1.2 Designer: Other Enhancements and Fixes.....	15
Connect 1.2 DataMapping: Other Enhancements and Fixes	18
Connect 1.2 Output: Other Enhancements and Fixes	20
Connect 1.2: Installation & Admin Improvements	22
Connect 1.2: Workflow\Automation Improvements.....	23
Known Issues	24



Overview

This document provides an overview of the new features and enhancements in PlanetPress Connect 1.2.n and PlanetPress Workflow 8.2.

Installing PlanetPress Connect Version and PlanetPress Workflow:

- PlanetPress Connect is released as a 64 Bit version only (with the exception of the Workflow, Fax, Search and Imaging modules).
- Full details on installing and licensing PlanetPress Connect and PlanetPress Workflow can be found in the online help in the installer.
- Note that both PlanetPress Connect and PlanetPress Workflow come with 30 day trial licenses by default.

Updating from earlier versions of PlanetPress Connect:

In order to upgrade via the Update Manager from PlanetPress Connect 1.1 to Version 1.2.n it is necessary to install a new version of the Objectif Lune Update Client. The next time you run your current Update Client it will show that there is an update available of itself to Version 1.1.8. Simply click on the download button in the dialog to install the new version of the Update Client. Note that it is no problem to run the update while the Client is open. It will automatically update itself. Once you have done this, PReS or PlanetPress Connect 1.2.n will become available for download. From Connect Version 1.2.0 onwards, the new version of the Update Client is included by default with the setups.

Users of PlanetPress Connect 1.0:

Users of this version will not be able to upgrade directly to Version 1.2.n. This is because Version 1.0 is a 32 bit version of Connect and users must first upgrade to Version 1.1 and from there upgrade to Version 1.2.n. **Upgrading directly from Version 1.0 to Version 1.2.n will cause the installation to fail.** For this reason the Update Client will first show the update to Version 1.1 and only afterwards the update Version 1.2.n.

Print Only Version:

A Print Only license is available with version 1.2.n of PlanetPress Connect which allows legacy PlanetPress Suite 7 customers on OL Care to upgrade to Connect for a minimal fee. The license allows regular printing via the Print Wizard but runs Email and Web output in demo mode. For more information, please contact your local OL Customer Care or Sales team.

Reduced Memory Version:

For demonstration purposes, it is now possible to install PlanetPress Connect on a machine with a minimum of 2 GB of RAM. The PlanetPress Connect Designer will automatically detect whether it has been installed on a machine with less than 4 GB of RAM and default to only using one internal Weaver and one internal merge engine on that system. The Server will also run using internal engines.

Connect 1.2.1: New Features and Enhancements

1. Performance Improvements

Print output performance has been further improved in Version 1.2.1. With particular emphasis on PostScript (including VPS/PPML) and PCL.

The biggest performance gains are to be found in print output workflows where a pre-existing print file is used as an input. Not only has the job processing been dramatically improved (some jobs are up to 10 times faster!), but the resulting output file is generally much smaller as well.

Specific improvements include:

- Refactoring internal Connect technologies to improve program efficiency, leading to improved performance for all workflows. (SHARED-34434/34440)
- Improved performance for jobs processing pre-existing print files (AFP/PCL/PDF/PS) as input. (SHARED-34349/34492)
- Improved PCL output performance through caching of resources. These improvements are most apparent when creating multiple output files from a single job. (SHARED-33889/34537/34577)

2. Stability Improvements

Improved stability via more efficient handling and cleaning of Connect internal databases. (SHARED-30295/30591/34687/35190)

3. Simplified logging

Debugging information has been moved into a separate log file to simplify problem diagnosis. (SHARED-34546)

4. OMR barcode implementation improved

OMR style barcodes can be added to pages using the Print Wizard. In duplex jobs these barcodes were only added to the front page. The implementation has now been enhanced and the barcode can now be replicated on the reverse side when printing duplex. (SHARED-34111)

Connect 1.2.1: General Fixes

1. **DataMapper** – Attempts at connecting to databases from Scripts would fail when using the "db.connect()" syntax. (SHARED-34928)
2. **Automation** – If an invalid [Mail host] entry was used in the **Create Email Content** plugin, the server would fail to recover and a server restart would be required. (SHARED-34820)
3. **"Capture On The Go" Forms** - Errors were encountered when adding data directly from the DataMapper into a Web Template COTG Form element label. (SHARED-33265)
4. **PostScript Output** – PS/VPS jobs which were set to be separated by "Document" or "Document Set" values would throw error messages. (SHARED-34591)
5. **PCL Output** – Issues were encountered when outputting PCL to certain printers. These included artefacts being introduced on pages and some pages being missed. These errors were due to differences in graphics handling on different printers and errors have now been fixed. (SHARED-34853)
6. **PCL Output** – Issue with the shadowing effect applied to graphical boxes. The shadowing was positioned over the box, rather than behind the box. (SHARED-35344)
7. **Print Output** – Issues were encountered with the page counter variable in some circumstances. These issues have now been resolved. (SHARED-35248)
8. **Email Output** – Attachments added to Connect email templates via scripting were not selectable in certain email clients. This was been fixed by changing the email format to mixed multipart MIME. (SHARED-35561)

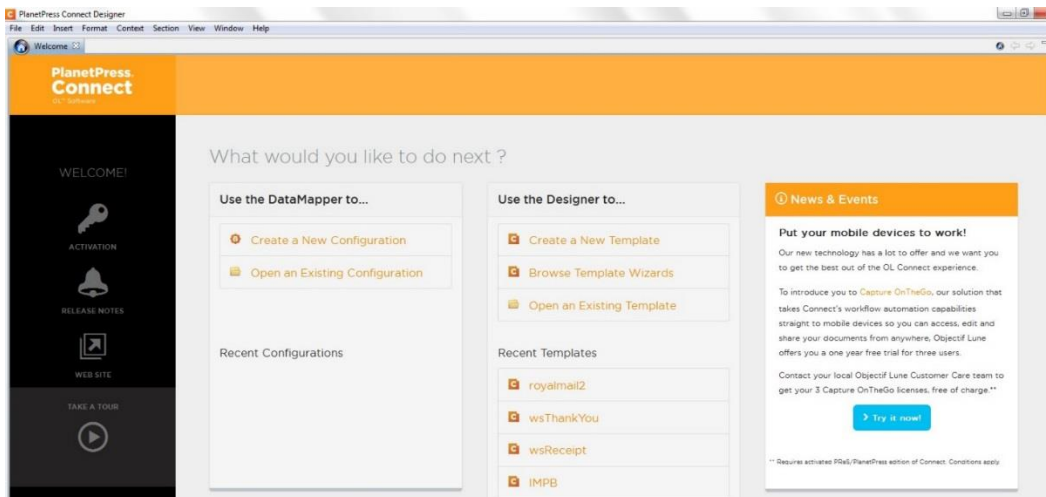
Connect 1.2: New Features and Enhancements

1. Significant Performance Improvements

Performance has been dramatically improved in Version 1.2. Connect is now 2 -3 times faster than the previous releases.

2. New Welcome Screen

Version 1.2 comes with a brand new Welcome Screen!



You can navigate back to the Welcome Screen at any time using the following button:



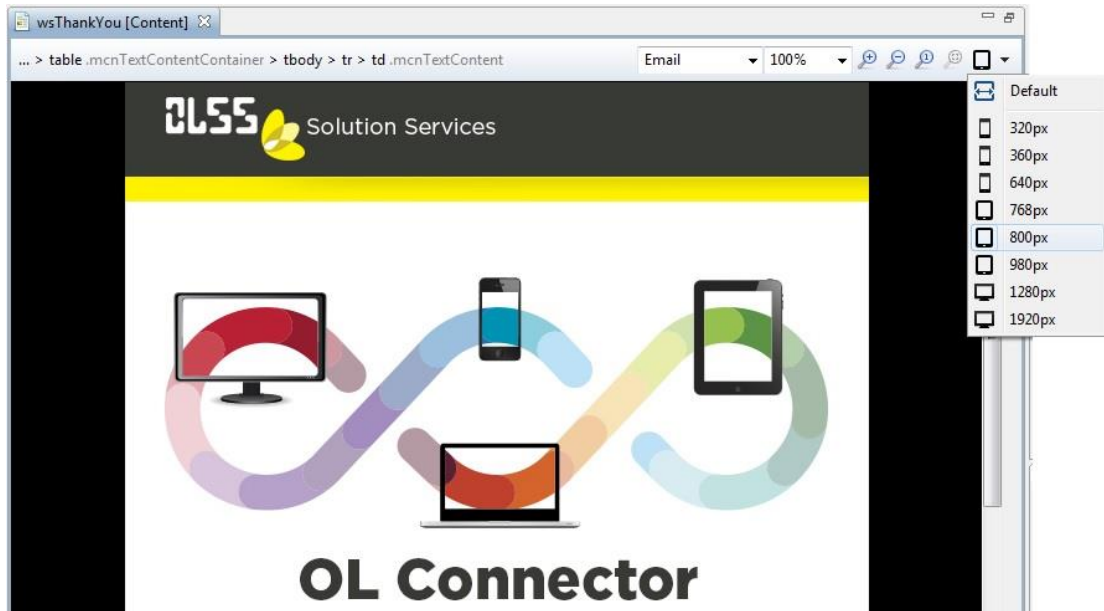
The new screen includes the following highlights:

1. A **navigation hub** for your existing templates and datamapping configurations.
2. Fast access to a range of **template wizards** including a range of **Capture OnTheGo** starter templates.
3. Fast access to wizards for creating new **datamapping configurations**.
4. Handy links to online **Connect courses, documentation and user forums**.
5. Easy access to the **Web Activation Manager** for activating your Connect license.
6. Links to the **release notes** for that version of Connect and the associated website.
7. **“Take a Tour”** link to online demonstration videos about Connect.
8. **“News & Events”** box keeping you up to date with the latest from Objectif Lune.



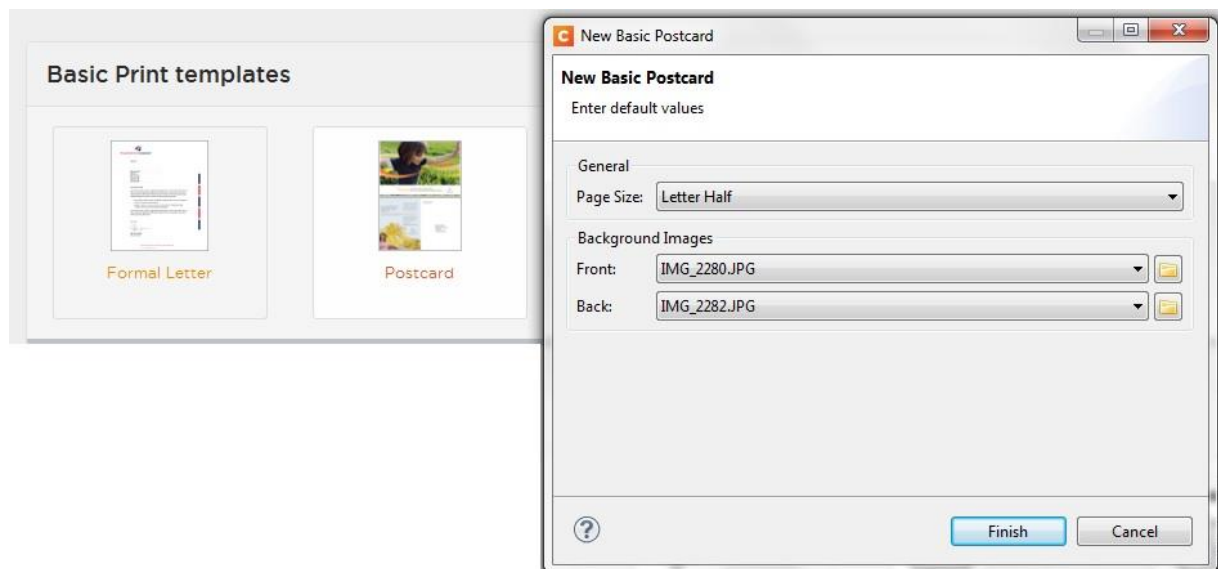
3. Responsive Design View

For Web and Email, both Design and Preview mode now support changing the viewpoint of the editor to mimic **smartphone and tablet** screen sizes. This allows easier customisation of the template for multiple display types. Click on the new tablet icon in the template window to open up a list of default smartphone and tablet sizes (SHARED- 22639)



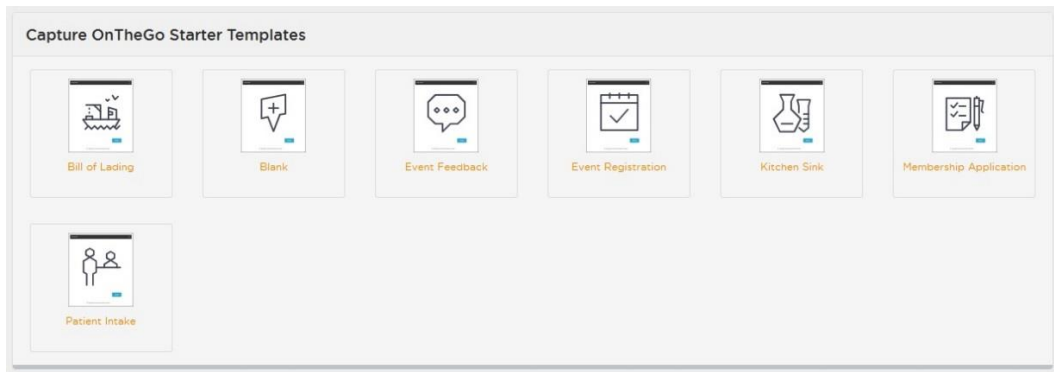
4. New Postcard Template Wizard

Various improvements have been made for the easier creation of new templates including a new Postcard Template wizard which allows you to specify the postcard size as well as the front and back images (SHARED-30324):

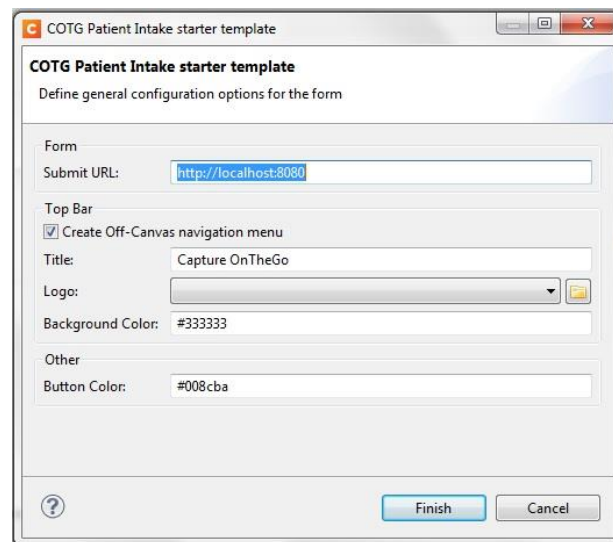


5. Capture OnTheGo Starter Templates

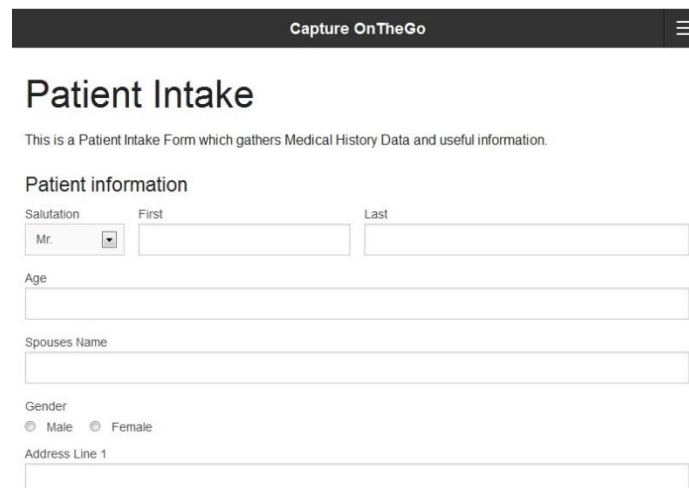
A selection of standard COTG starter Templates is now available in the Connect Welcome screen. (SHARED-29412):



For example clicking the “Patient Intake” template opens the following wizard:

A screenshot of a configuration wizard window titled "COTG Patient Intake starter template". The window has a header bar with the title and standard window controls. Below the header, the text "COTG Patient Intake starter template" and "Define general configuration options for the form" are displayed. The main area contains several configuration sections: "Form" with a "Submit URL" field set to "http://localhost:8080"; "Top Bar" with a checked "Create Off-Canvas navigation menu" option, a "Title" field set to "Capture OnTheGo", a "Logo" dropdown menu, and a "Background Color" field set to "#333333"; and "Other" with a "Button Color" field set to "#008cba". At the bottom, there is a help icon (question mark) and "Finish" and "Cancel" buttons.

This inserts a Capture OnTheGo form with a layout similar to the following:

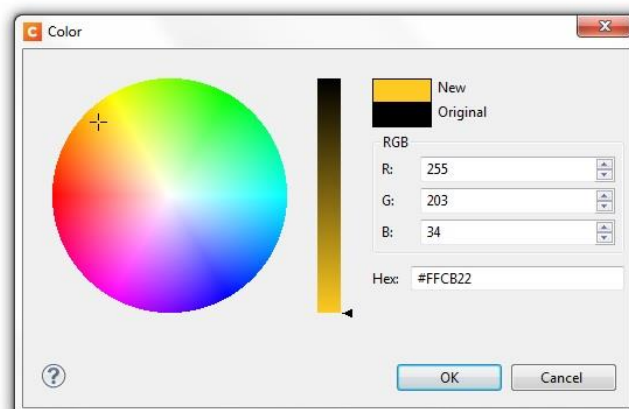
A screenshot of a web form titled "Patient Intake" under the "Capture OnTheGo" header. The form includes a subtitle: "This is a Patient Intake Form which gathers Medical History Data and useful information." Below this, the section "Patient information" contains several input fields: a "Salutation" dropdown menu with "Mr." selected, "First" and "Last" name text boxes, an "Age" text box, a "Spouses Name" text box, a "Gender" section with radio buttons for "Male" and "Female", and an "Address Line 1" text box.

6. Other Capture OnTheGo Enhancements

1. Forms can be added directly within Web Context templates by right clicking and selecting **Form Elements** -> **Form** (SHARED-28804)
2. Support has been added for **Barcode Scanning** within COTG jobs. (SHARED-30000)
3. Support has been added for the setting of **camera properties** within COTG jobs. (SHARED-31684)
4. Automation in **Camera Widget** now supported, allowing annotation on pictures in COTG jobs. (SHARED-30580)
5. **PDF output Compression settings**: Compression options have been introduced for PDF output allowing the confirmation email for COTG jobs to be as small as possible. (SHARED-31343)
6. **User account and device information** can now be embedded. (SHARED-31653 and 31686)
7. New COTG forms now default to **POST**, to reduce the likelihood of errors when submitting camera data. (SHARED-32853)
8. The inputs for **Device Info and Account** Info are now set to visible and read-only by default. (SHARED-32858)
9. The Designer failed to test if the Form Elements or COTG Widgets **"ID" field** was entered. This has been fixed. (SHARED-32075)
10. Improved handling of **geolocation objects**. (SHARED-32509)

7. Colour Selection Dialog

A colour selection dialog is now available in the Designer for specifying RGB colours (SHARED-16675):



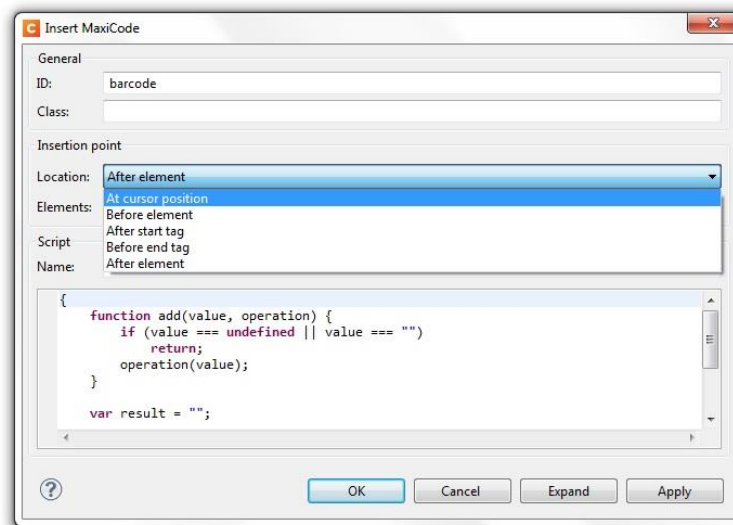
Support for specifying CMYK colours will be added in a later release.

8. Support for MaxiCode Barcodes

Support has now been added for MaxiCode barcodes (SHARED-23186):



The “Insert MaxiCode” dialog is opened when inserting the code which allows you to specify its value and properties:



9. Other Barcode Improvements

- QR barcodes: Support for colour and Cyrillic, Arabic, Greek and other non-Latin characters (SHARED-21118 and 31817)
- Barcodes now inserted at the default height which is appropriate to the barcode type. (SHARED-30189)
- Colour background for barcode types supporting colour. (SHARED-31291)

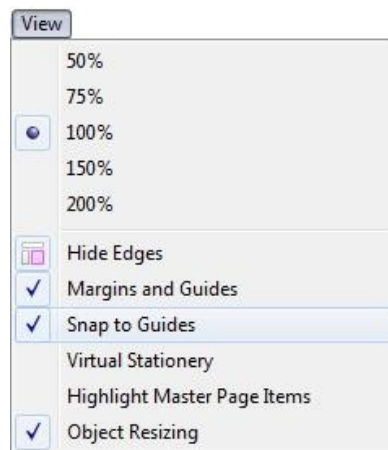
10. Guidelines in the Designer

Guidelines have been added to the Designer (SHARED-30357). These are insertion guides which can be used to align content (typically absolute positioned objects) on the page. Guidelines can be set to “snap-to” so that when you place an object near a guideline, the object will then snap-to that line. Guidelines can be added to the page by the right-click context menu within the Design screen.

In the following illustration the guidelines are shown in blue while the bleed margins (specified separately) are shown in red:



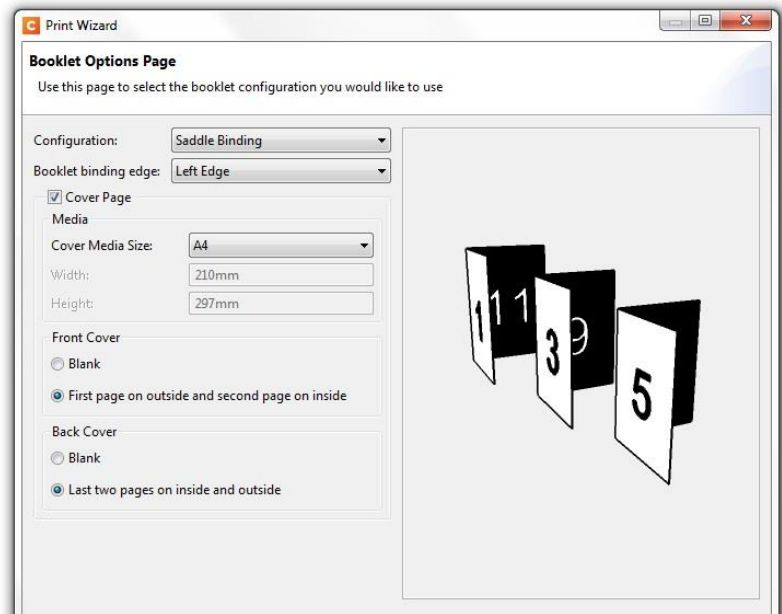
Guidelines and snapping can be switched on and off via the following settings in the new View menu:



Support has also been added for Snap to Page Border/Margins when resizing objects or when dropping objects onto them. (SHARED-11427/19595).

11. Coverpage Support for Booklets

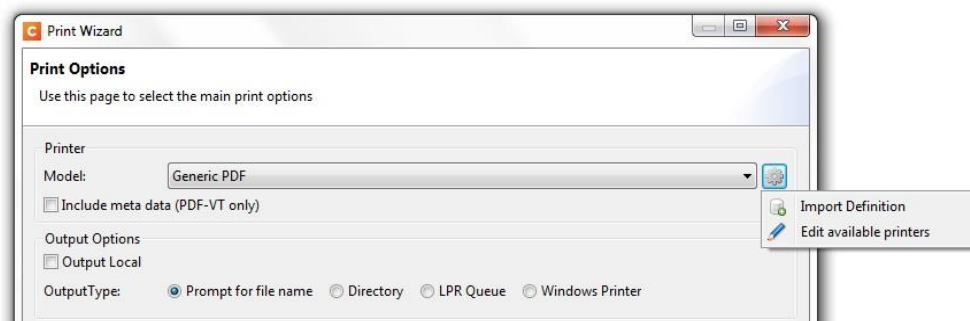
Support has been added for Facing/Cover pages in booklet output. Cover pages (both front and rear) are available in saddle bound booklet jobs. Different media can be selected for the front/back covers compared to those used in middle pages:



The implementation covers basic booklet use cases and will be extended in future versions.
(SHARED-28917/30328/31122 & 32028)

12. Direct Access to Printer Definitions in Print Wizard

A new browse button in the Print Wizard allows fast access to the currently available printer definitions (SHARED-31120):



A sample definition for Xerox 4112 is included with Connect and further definitions will become available for later releases.

13. Support for Dynamic Sheet and Page Counters in Pagination

Support has been added for Sheet and Page counters in the pagination process. This is done via the **Special Characters** selection in the Insert Menu. (SHARED-31595)

The options are as follows:

- Sheet Position
- Sheet Count
- Content Page Number
- Content Page Count

14. Support for Box Sizes in PDF

Settings are available for Media\Bleed only in the Page Section Properties dialog. Crop, Trim and Art take default settings:



The screenshot shows a dialog box titled "Bleed". It contains a checkbox labeled "All sides" which is checked. Below this, there are four input fields for bleed dimensions, all set to "0.1 in". The fields are labeled "Top:", "Bottom:", "Left/Inside:", and "Right/Outside:".

Note that the Bleed settings have now been removed from the Print Wizard and can only be made in the Page Section Properties dialog.

15. Support for JSON Snippets

Support has been added for JSON Snippets and native JSON editing (SHARED-21763).

16. Support for External Hyperlinks in PDF's

Hyperlinks are now supported in both PDF print output and PDF files attached to emails (SHARED-30677/31207).

17. New Compression Options for PDF's in Email Output

Image compression options have been enhanced allowing smaller intermediate files and preview PDFs. This allows better compression of PDF's in email output and generally improves output creation (SHARED-28394).

Connect 1.2 Designer: Other Enhancements and Fixes

Enhancements

1. **MICR font** added to support the creation of cheques. (SHARED-27392)
2. A variety of **Error Handling**, **Error Logging** and **Error Messaging** improvements have been made throughout Connect, with a particular focus on printing. (SHARED-28170/29915/31213)
3. Double-clicking an **OL-script file** no longer causes the script file to load in Connect Designer. (SHARED-29556)
4. Current **date string field** added - @date@. This field will be populated by the system date at run time. (SHARED-22470)
5. Inconsistencies that existed between the **toolbar and menu options** have been cleaned up. (SHARED-13232)
6. **HTML code “auto-complete”** behaviour has been improved within Source View. (SHARED-13317)
7. Added **support for setting image conversion options** for <div> elements. These include graphic files as well as Business Graphics (Charts) and Barcodes. (SHARED-19580)
8. Improved implementation of **Cut/Copy and Paste** from Microsoft Word documents (SHARED-21095)
9. Introduced option to enable/disable the **resizing of <div> objects**. (SHARED-22763)
10. **Outline View** - Context menu support added for deleting HTML outlines. (SHARED-25185)
11. Both **Widows** and **Orphan** settings have been added to the “**breaks**” section in the Table properties dialog. (SHARED-29631)
12. Can now convert **inline DIV or IMG elements** to absolute positioned elements and vice-versa. (SHARED-30584)
13. Can now **add tables and other resources** directly within a Snippet, using the Snippet Editor (SHARED-30588)
14. Previewing of **.SVG files** in resources panel now supported (SHARED-30675)
15. **Syntax highlighting** improved for JavaScript editing. (SHARED-31008)

16. **Scripting:** Command introduced to retrieve information about pages within a static PDF file. The information includes total number of pages, the current page number and the page dimensions. (SHARED-31257)
17. **Paragraph Format** added to Menu options. (SHARED-32155)
18. **Colour setting** improved. When one set the text colour through hsl() or hsla() settings, or through a hex notation, when you viewed the text in Source view or in the text formatting dialog, the colour settings would change to their RGB() equivalent. This has been improved, and the original colour selection choice is now retained. (SHARED-32789)
19. When using the **document outline** to select an element, the document view (preview or design) would scroll the page to bring the element into view, even if the selection was already within view. This behaviour has been changed, and now selecting an element will simply do that, without altering the view. It won't shift the view to show the element, unless the element is double clicked within the outline. (SHARED-33101)
20. Improved HTML "**Pretty Print**". The elements <tbody>, <tfoot>, <thead> and <tr> now always start on a new line. (SHARED-33143)

Fixes

1. The Ctrl +/- keyboard **shortcuts** did not zoom in/out the view as expected. (SHARED-5159)
2. **Pie Charts** – if you selected the same Input type twice in a row, the dialog box would switch the entry to another Input type. (SHARED-18254)
3. **Snippets** - An option to convert snippets to "shared content" was available in circumstances where that behaviour should have been disallowed. (SHARED-27304)
4. Timeout errors sometimes encountered when attempting to activate a license on a newly installed Connect instance, if the activation attempt was done directly from Designer. (SHARED-27501)
5. Webfonts were not embedded when **Embed All Resources** was selected. (SHARED-28789)
6. **Canadian international standard keyboard** could not type square brackets (via alt+9/alt+0 key combinations) in scripts/source. (SHARED-29528)
7. When a new Template was created the **scrollbar settings** did not reflect the page dimensions correctly, which was misleading. (SHARED-29932)

8. PreFlight Checking

- Conducting Preflight checks on Transactional templates containing Control scripts would sometimes lead to crashes. (SHARED-29967)
 - Preflight checks would sometimes freeze upon checking snippets containing tables and graphics. (SHARED-30758)
9. Designer failed to **delete images** in the Designer Workspace when that image file was deleted from the resource list. (SHARED-30117)
 10. Deleting **all 'objects' in the Outline tab** would leave some HTML artefacts behind. (SHARED-30150)
 11. **Table cell width values** could get mixed up when they conflicted with a containing field's CSS width values. This would lead to errors being recorded in the logs. (SHARED-30419)
 12. Designer sometimes added a **duplicate data field** on a new line, if the cursor had been placed at the end of the data field when the Enter key were pressed. (SHARED-31071)
 13. Issues with **adding large inline image files**. Whilst initially positioned correctly, their properties could not be accessed. Attempting to do so would push the image onto another page. (SHARED-31144)
 14. Font changes made via the **font control box** in the main toolbar did not always get applied. (SHARED-31339)
 15. **Intermittent 'Time Out' errors** sometimes encountered when opening a new Template and DataMapper, after the repeated printing of another Template. (SHARED-31367)
 16. **Script Editor** would not load when called on paragraph text which had been selected by Triple clicking on text in the paragraph. (SHARED-31390)
 17. Could not load the same **snippet** in both Control script and Plain (normal) script files. It would work in one or the other, but not both. (SHARED-31403)
 18. Could not insert **business graphics** into templates which contained more than one detail table. (SHARED-31485)
 19. Dragging and dropping an **empty HTML snippet** into a table led to exception errors. (SHARED-31607)
 20. After **changing a section of text**, any subsequent change made to that section within Source View would reverse the previously made changes. (SHARED-31838)
 21. Specifying data fields as "**Currency, No Symbol**" would fail to properly apply the local decimal/thousand separator symbols. This has been fixed (SHARED-31988).
 22. Errors were sometimes encountered when attempting to convert a full page design into a snippet via the **Snippet->Create Shared Content** option. (SHARED-32318)

Connect 1.2 DataMapping: Other Enhancements and Fixes

Enhancements

1. DataMapper steps can now be set to **"ignore"**. Ignored steps will also have all children steps set to ignored. (SHARED- 14295)
2. Improvements made to **copy/paste of job steps** between logical data extraction steps/structures. (SHARED-25317)
3. **Datafile selection** dialogs improved. (SHARED-30775/30778)
4. **Undo functionality** now implemented. (SHARED-26440)
5. **Error-messaging** has been improved. (SHARED-27301)
6. The new **On field value** option can be used to set boundaries based on the selected value within a data field. (SHARED-28589)
7. DataMapper can now **convert TABs** in incoming text datafiles to a series of space characters, with the amount of spaces used to be specified by the user. (SHARED-30702)
8. When extracting a multiline section of an input file using the Extract step, you could change the **type of the extracted block of data** to something irrelevant (boolean, currency, etc). This datatype change was not actually applied, as it made no sense to do so. In order to reduce potential confusion, the option to change the data type has been removed. (SHARED- 30893)
9. DataMapper now **supports connection to ODBC data sources** using Windows Authentication. (SHARED-32490)

Fixes

1. When the user attempted to use the **CONTAINS condition** against a position which appears after a line break or newline character, then the condition would always resolve to true. This has been fixed. (SHARED-5154)
2. **Deleting complex Conditional sections** within the Steps pane could sometimes lead to the horizontal scroll bar that runs along the bottom of the Steps pane disappearing. (SHARED-27006)
3. DataMapper erroneously allowed creation of **invalid DataMapping configuration files** for databases lacking user tables (SHARED-28264)
4. Issues were sometimes encountered with **adding second data table** in DataMapper. (SHARED-28420)

5. The Extract step "**Use selection**" property was not setting the boundary box parameters correctly. This could lead to data not being extracted. (SHARED-29789)
6. **Changing a database datafile** within a DataMapper configuration could sometimes lead to error messages being logged, suggesting ODBC errors in connecting to datafile (SHARED-30443)
7. DataMapper threw errors when attempting **to extract data from PDF/VT input files** which were opened as standard PDF files. (SHARED- 30553)
8. Extremely long data-field contents would not display in the **Data model panel**, even though the data was extracted and available to the job. This has been fixed. (SHARED-31019)
9. Issues when creating a **transactional PDF DataMapper** by dragging and dropping selections directly into the steps pane. If this were done when a loop was selected then the offset would be incorrectly set. (SHARED-31374)
10. It was possible to add a Field or Table in the data model, without providing a **name for the Field or Table**. This has been modified and a name must now be provided. (SHARED-31861)
11. The **line separator** symbol "¶" had a semi-colon appended to it "¶;". The semi-colon was unnecessary and has now been removed. (SHARED-32251)

Connect 1.2 Output: Other Enhancements and Fixes

Enhancements

1. **PostScript:**
 - Large files (100,000+ records) output processing significantly improved. (SHARED-32571)
 - Generic PostScript Printer Definitions extended to support up to 12 trays, with the media type SRA3 as the maximum supported paper size. (SHARED-33903)
2. **Improved job creation speeds** for when using Sorting/Filtering or Metadata. (SHARED-33459)
3. **Improved stability** in larger jobs. (SHARED-31015/31042)
4. **PCL** - Improved disk usage and reduced output file size for PCL jobs. (SHARED-18000)
5. **Improved Virtual Stationery handling:** New dialog options to set background images as Virtual Stationery. This includes specifying the Virtual Stationery image position in relation to the page it is associated with. (SHARED-31345)
6. **Scheduling preferences** to allow improved scheduling/load balancing and cater for the output of simultaneous files. (SHARED-28785)
7. **Proof mode printing** – Watermarked output file size has been substantially reduced. (SHARED-25232)
8. **Additional paper sizes** B4, B5 (Japanese Envelope Standard versions) and B6 (both ISO and Japanese Envelope Standard versions) added to media/page selection. (SHARED-31409)
9. Improvement in the **processing of text strings** has resulted in output speed improvements and file size reductions. This is most apparent with Transactional Templates. (SHARED-33958)

Fixes

1. **Email** - Images hidden via a conditional script were removed from the DOM, but were still available as a CID attachment. (SHARED-33013)
2. **PCL:**
 - Characters could sometimes be cut from the bottom of the page. This issue has been fixed. (SHARED-18159)
 - Elements (text or otherwise) set to a custom tint based upon a black tint would fail to print. (SHARED-33068)
3. When generating multiple **PostScript Level3** output files with Job Separation, not all the output files page numbers would start at page 1. (SHARED-31397)

4. Production printing could not be **automated** in jobs which had change boundaries set based upon JobInfo fields. (SHARED-30897)
5. Creating output utilising the **directory output** option would error when using a filename containing the text string "job". (SHARED-31322)
6. During a long print run attempts at **cancelling the current print** would fail to apply. (SHARED-31337)
7. **Splitting print output** into several files via the "Grouping and Separation" selection was failing for all but PDF and IPDS output types. (SHARED-31353)
8. Issues have been fixed with **previewing OMR settings** in the Output Creation wizard. (SHARED-31525)

Connect 1.2: Installation & Admin Improvements

1. **MySQL:**

- Can now be installed as a stand-alone feature from within Connect installer. (SHARED-29001)
 - Strong password protection is now enforced in the Connect MySQL installation. The password must be a minimum of 8 characters in length and contain at least one of each of the following: Lower case text, Upper case text, Numerical digit(s) and Punctuation character(s). (SHARED-31277)
2. Server Installation now checks to see if the user has **permission to run Services**. If they do not, then the installer then grants them the right to run this service. (SHARED-27557/32068)
 3. Can now install Connect on machines **without an active Internet connection**. (SHARED-30203)
 4. Improvements made in the **automated cleanup processes** (within temporary databases, and in general disk and RAM utilisation) have led to significant improvements in the processing speed of jobs. (SHARED-30540/30589/34160)

Fixes

1. Improvements have been made when installing from a **remote repository** with low bandwidth. (SHARED-28160)
2. In some circumstances the **Update Client** did not display the Release Notes due to OS language settings. (SHARED-30531)
3. Uninstalls no longer error when encountering **locked files** or folders. (SHARED-30937)
4. Better handling of cancelled/failed **3rd party pre-requisite installations**. (SHARED-31365)
5. **Licensing** sometimes failed on machines that had previously had Connect installed but licensed to someone else. (SHARED- 30549)
6. Not all **internal database transactions** were rolled back when exceptions encountered. This eventually led to broken foreign keys within those databases. (SHARED-31945)

Connect 1.2: Workflow\Automation Improvements

Templates Used in Workflow:

For improved performance we recommend resaving Workflow templates set up in the previous release to run in PlanetPress Connect 1.2\Workflow 8.2.

Enhancements

1. The Workflow Scripting Host has been modified to natively **support JSON syntax**. (SHARED-31487)
2. Can now **select multiple files** when importing Connect content into Workflow. (SHARED-31887)
3. **Standard email fields** have been added to Connect preferences in Workflow. Default parameters can be set and will thereafter be applied to these fields. The defaults can in turn be overwritten by individual selection. (SHARED-31890)
4. Previously Workflow overwrote existing Connect resources when receiving new ones from other applications (i.e., when files were dropped into its Documents\IN subfolder). This caused issues when developing new templates or configs because there was no way to revert to the previous version if the new version did not perform as expected. The same applied to .OL-workflow configurations themselves, and to the active configuration for the Workflow service. With the new version, Workflow now **saves the existing resource to an archive folder** (up to 30 versions per individual file). (SHARED-32184)
5. The **Retrieve Items** task allows both commingling and batching, but the tab used to select this functionality was labelled just "Commingling". This has been updated to "Batching/Commingling". (SHARED-32376)

Fixes

1. Running two jobs simultaneously using an **AllInOne plugin** in a Self-Replicated process would generate errors. (SHARED-31232)
2. Errors were sometimes encountered when **"Execute DataMapping"** was used in conjunction with a DataMapping config which contained an extraction step with scripting. These errors would be encountered when data extraction operations occurred simultaneous. (SHARED-31519)
3. Running **multiple PDF DataMapper jobs** in parallel led to errors. (SHARED-31788)

Known Issues

1. GoDaddy Certificates

When installing Connect offline, dialogs are available in the setup for installing the GoDaddy certificates. Most users will leave the default settings and click "Next". In some cases however this may not work correctly. For this reason users should activate "Place all certificates in the following store" and then select the "Trusted Root Certification Authorities" as the target certificate store.

2. Server Restart

After installing Connect, a Server restart can sometimes be initiated during the license activation which can lock the database and break Connect. In the background it has set a flag in the database that cannot be cleared. In order to fix the problem you need to reinstall Connect or stop the MySQL table. This issue will be fixed in a later release.

3. Upgrading a Standalone Installation of Designer

If you have installed the Connect Designer version 1.0.0 or 1.0.1 as a standalone, the merge and Weaver engines will not start correctly after upgrading to version 1.2.n.

To fix this problem you need to delete the HSQLDB in the following folder:

`C:\Users\{current user}\AppData\Local\Temp\connect.database\`

This database will be reinitialized automatically on the next start-up. The problem will be fixed in a later release of Connect.

4. MySQL Compatibility

If you install MySQL 5.6.25 with Connect 1.2.n, a downgrade to an older version of Connect or MySQL version is not seamlessly possible. This is because the database model in MySQL 5.6 is different to version 5.5. If you need to switch to an older version of Connect / MySQL, it is necessary to remove the Connect MySQL Database folder from "%ProgramData%\Connect\MySQL\data" before installing the old version.

5. PostScript Print Presets

The print presets for PostScript were changed from Version 1.1 onwards meaning that some presets created in Version 1.0 or 1.0.1 may no longer work.

Any PostScript print preset from Version 1.0 that contains the following will not work in Version 1.2.n: `*.all[0].*`

Any preset containing this code will need to be recreated in Version 1.2.n.

6. Available Printer Models

Note that if you are upgrading from an earlier version of Connect, only one Printer Model will appear on the Advanced page of the Print Wizard (Generic PDF by default). From 1.1 onwards you need to go to “Window|Preferences|Print|Available Printers” and specify which models you wish to be available on the Advanced page of the Print Wizard. You can go directly to this dialog by clicking on the browse button next to the selection box in the Print Wizard.

Note that the descriptions of some of the printers have been updated in version 1.2 meaning that if you had an earlier version installed, you may find that the same printer appears twice in the list with slightly different descriptions.

For example the following default settings are identical:

- Generic PS LEVEL2 (DSC compliant)
- Generic PS LEVEL2 (DSC)

7. External Resources in Connect

There are certain limitations on how external resources can be used in Connect. For example if you want to link a file (e.g., CSS, image, JavaScript etc.) from a location on the network but you do not want to have a copy of the file saved with the template you need to do the following:

1. The resource must be located where it can be accessed by the server. Failure to do this will cause the image to appear as a Red X in the output for all documents which were merged by engines which could not access the file. The job will terminate normally and the error will be logged.
2. The file must be referenced via a UNC path e.g.,

<file:///w2k8r2envan/z%20images/Picture/Supported/JPG/AB004763.jpg>

- a. UNC paths are required because the services will be unable to access mapped network drives (Windows security feature).
- b. The engine processing the job will look on the local file system for the direct file path leading to the “resource not found” issue mentioned above.

Important Note: The Designer itself and Proof Print do not use processes that run as services and they may find local files with non-UNC paths which can lead to the false impression that the resources are correct.

8. Using Capture After Installing Workflow 8

After PlanetPress® Workflow 8 has been installed alongside PlanetPress® Workflow 7, Capture can no longer be used with Workflow 7. The plugins are now registered uniquely to Workflow 8 and the messenger for Workflow 7 is taken offline. It is only then possible to use Capture from PlanetPress® Workflow 8.

9. Capturing Spool Files After Installing Workflow 8

After PlanetPress® Workflow 8 has been installed alongside PlanetPress® Workflow 7, PlanetPress Suite's option to capture spool files from printer queues is no longer functional. The solution is to use Workflow 8.x to capture spool files from printer queues.

10. Colour Model in Stylesheets

In Version 1.2.n the colour model of colours defined in a stylesheet can sometimes change after editing the stylesheet. This is a known issue and will be addressed in a subsequent release.

11. Online Help Links Point to Introductory Page

Context sensitivity for the online help is disabled in PlanetPress® Connect Version 1.2.n meaning that all links and F1 calls currently point to the introductory page of the help. Context sensitivity will be re-introduced in a subsequent release of PlanetPress® Connect.

12. Black Screen sometimes appearing in the Designer

The Designer window can sometimes turn black after opening and closing multiple templates. This is a known issue and will be addressed in a later release.

13. Image Preview in Designer

If in the Windows Internet settings (Connection Settings -> LAN configuration) a proxy is enabled, but "Bypass proxy settings for local addresses" is not checked, the image preview service, conversion service and live preview tab in the Designer will not work and exhibit the following issues:

- Images will be shown as 0 size boxes (no red 'X' is displayed)
- Live preview does not progress, and when re-activated reports "browsers is busy"

To fix the issue you must check the "Bypass proxy settings for local addresses" option.

14. Encoding

Issues may sometimes be encountered in menus and templates when running PlanetPress® Connect on a non-English operating system. These are due to encoding issues and will be addressed in a later release.

15. Merge\Weaver Engines when Printing

The print operation in the Designer will automatically detect whether the Merge\Weaver engines are available and display a message for the user to retry or cancel if not. Once the Merge\Weaver engine becomes available and the user presses retry the print operation will proceed as normal. This message can also occur in the following circumstances:

- If the server is offline and you are not using Proof Print
- On some occasions before the Print Wizard opens

16. REST Calls for Remote Services

The Server will now accept REST calls for all remote services and will make commands wait indefinitely until the required engines become available. The Server will log when it is waiting for an engine and when it becomes available. Note that there is no way to cancel any commands other than stopping the Server.

17. Print Content and Email Content in PlanetPress® Workflow

In PlanetPress® Workflow's Print Content and Email Content tasks, the option to Update Records from Metadata will only work for fields whose data type is set to String in the data model. Fields of other types will not be updated in the database and no error will be raised. This will be fixed in a later release of PlanetPress® Connect.

18. VIPP Output

Some templates set up with landscape orientation are being produced as portrait in VIPP. It can also sometimes be the case that text and images can be slightly displaced. These are known issues and will be addressed in a later release of PlanetPress® Connect.

19. Print Limitations when the Output Server is located on a different machine

The following limitation may occur when using the Print options from a Designer located on a different machine to the Output Server:

- The file path for the prompt and directory output modes is evaluated on both the client AND server side. When printing to a network share it must be available to BOTH the Designer and Server for the job to terminate successfully.
- The Windows printer must be installed on both the Server and Designer machines.
- When printing via the Server from a remote Designer, the output file remains on the Server machine. This is remedied by selecting "Output Local" in the Output Creation configuration.