

# **PReS<sup>®</sup>** **Connect**

## Release Notes

Version 2022.1.2





Release Notes

Version 2022.1.2

Last Revision: 2022-06-08

Upland Objectif Lune

2030 Pie-IX, Suite 500

Montréal, QC, Canada, H1V 2C8

+1 (514) 875-5863

[www.objectiflune.com](http://www.objectiflune.com)

All trademarks displayed are the property of their respective owners.

© Upland Objectif Lune. 1994-2022. All rights reserved. No part of this documentation may be reproduced, transmitted or distributed outside of Upland OL by any means whatsoever without the express written permission of Upland OL. Upland OL disclaims responsibility for any errors and omissions in this documentation and accepts no responsibility for damages arising from such inconsistencies or their further consequences of any kind. Upland OL reserves the right to alter the information contained in this documentation without notice.

# Table of Contents

<b>Table of Contents</b>	<b>4</b>
<b>OL PReS Connect Release Notes 2022.1.2</b>	<b>6</b>
License Update Required for Upgrade to OL Connect 2022.x	6
Backup before Upgrading	6
Overview	7
OL Connect 2022.1.2 Improvements	8
OL Connect 2022.1.1 Improvements	8
OL Connect 2022.1 Improvements	8
Version control added	8
Runtime parameters	9
Swiss QR barcode	10
New Connect Installer	10
Java update	10
Maria DB installed with Connect	11
Server Configuration	11
OL Connect 2022.1 Designer Improvements	12
Import Microsoft Word documents into print Templates	12
HTML templating using Handlebars	12
Improved Web Font support	13
Conditional Script improvements	14
Search across Resources	14
Sample Projects	15
General Designer Improvements	16
OL Connect 2022.1 DataMapper Improvements	17
JSON Field Type added	17
Runtime Parameters added	17
MariaDB support	17
General DataMapper Improvements	18
OL Connect 2022.1 Output Improvements	19
Tweak Postscript Headers	19
Use system fonts as fallback for missing input file fonts	19
General Output Improvements	20
Email Output Improvements	20

Print Output Improvements .....20

OL Connect 2022.1 Print Manager Improvements .....22

Workflow 2022.1 Improvements .....23

    Runtime variables added to Go Sub .....23

    Legacy Plugins .....23

    General Workflow Improvements .....24

OL Connect 2022.1 Improvements .....26

    Security and Installer improvements .....26

    REST API Improvements .....26

Known Issues .....26

# OL PReS Connect Release Notes 2022.1.2

## License Update Required for Upgrade to OL Connect 2022.x

From OL Connect 2019.1 onwards, only customers with a current OL Care subscription will be able to update Connect.

Every Connect license now contains an end date that represents the last day of OL Care coverage for each customer. Upgrades and updates of Connect will be freely available up until that end date, but will not be available thereafter, unless the OL Care period is extended.

This new licensing model requires anyone upgrading from Connect versions earlier than 2019.1 to first update their OL Connect License.

A dialog box appears as part of the Connect upgrade process requesting you to do this.

It is heavily recommended that you first update the OL Update Manager, as newer versions of the Update Manager can update your OL License to the required version, then install Connect 2022.1.

For further details on how to upgrade the Update Client and update your Connect License see the [Update Manager 1.5 - Upgrade Guide](#).

If issues arise, or if you need to renew your OL Care subscription, please contact your [local Customer Care group](#).

## Backup before Upgrading

It is recommended that you always backup your existing Connect preferences before upgrading to a new version. This will enable you to revert back to the previous version, in a worst case scenario in which the new version introduces issues with your existing production processes. Whilst the probability of such a worst case scenario is remote, it cannot hurt to take some simple precautions, just in case.

For instructions on how to do so, please see [how to backup an existing Connect installation](#).

# Overview

This document provides an overview of the new features and enhancements in PReS Connect 2022.1 and PReS Workflow 2022.1, as well as some important installation information.

## Installing OL Connect 2022.1 and Workflow 2022.1

- PReS Connect is released as a 64 Bit version only (with the exception of the Workflow, Fax, Search and Imaging modules).
- Full details on installing ([Installation Wizard](#)) and licensing ([Activating a License](#)) PReS Connect and PReS Workflow can be found in the linked online Help pages.
- Note that both PReS Connect and PReS Workflow come with a 30 day trial license by default.

## Connect and Workflow installers require Administrator rights

Please note that the PReS Connect and PReS Workflow installations *can only be run by users who have Administrator rights*.

## Connect Templates Used in Workflow

For improved performance we recommend re-saving any Connect templates used in Workflow to the current version of Connect templates.

## Reduced Memory Version (*not recommended for production*)

It is possible to install OL Connect on a machine with a minimum of 2 GB of RAM. The Connect Designer will automatically detect whether it has been installed on a machine with less than 4 GB of RAM and default to only using one internal Weaver and one internal merge engine on that system. The Server will also run using internal engines.

## OL Connect 2022.1.2 Improvements

An additional security feature has been added, making Connect 2022.1.2 the official Connect 2022.1.x release. (SHARED-86250)

## OL Connect 2022.1.1 Improvements

Some issues were discovered with the new Connect Installer during 2022.1.0 Release Candidate testing. These issues have now been fixed. (SHARED-86124)

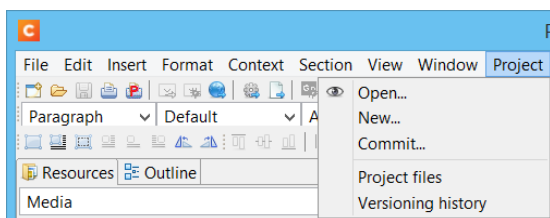
## OL Connect 2022.1 Improvements

Version control added

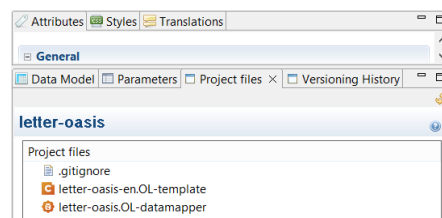
Both the **Designer** and the **DataMapper** now use Git integration to maintain a history of files inside named **Projects**. (SHARED-81457)

This feature allows you to combine all the files used in a Project and keep a record of any/all changes made to any of the files within the Project thereafter.

Projects are added via new **Project** menu.



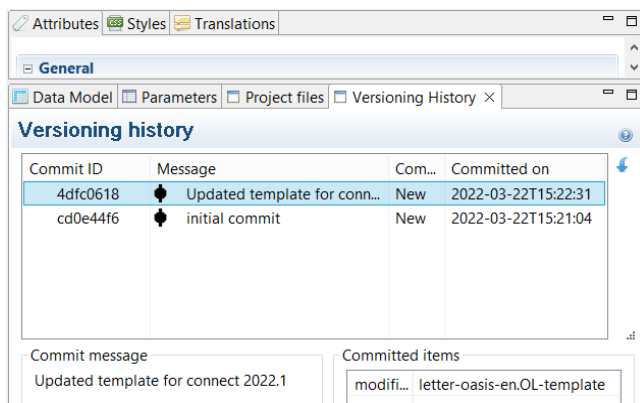
The files comprising a Project can be viewed in the new **Project Files** panel.



Each time you *commit* a resource (i.e., when you save an updated version of it), any additional information provided gets recorded alongside the file.



You can browse through the history of all changes in the **Versioning History** panel, which contains a complete record of who did what, on which date, and for which reason.



You can elect to revert to a version from within the history if something turns out to be flawed in your current project.

## Runtime parameters

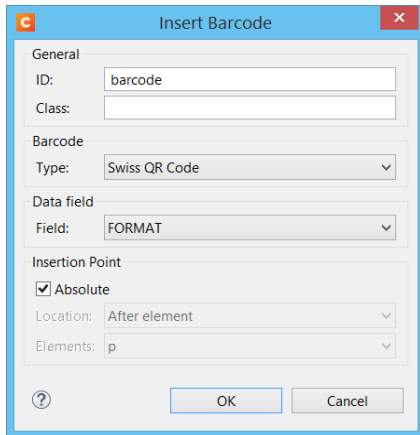
The **DataMapper** now lets you specify runtime parameters directly inside condition and repeat steps so that you no longer have to write scripts.

We have also added Runtime parameters when calling **Workflow** sub-processes. The **Go sub** task now lets you specify which values to pass on to the sub-process without having to go through intermediate steps (by first storing them inside JobInfos, for instance).

This feature not only allows you to design your sub-processes faster, it also eliminates potential mistakes caused by improper values being passed to them.

## Swiss QR barcode

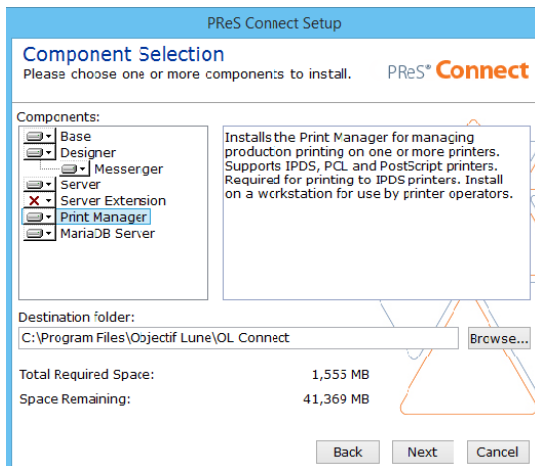
Swiss QR barcode support added to Connect. (SHARED-84012)



## New Connect Installer

The OL Connect installer has been totally re-engineered. (SHARED-81627)

The new installer is based upon more standard architecture and supports rollbacks in case something goes wrong during installation.



## Java update

Updated the Java platform upon which Connect runs to AdoptOpenJDK 11.0.13+8 (SHARED-82163)

## Maria DB installed with Connect

Fresh installations of Connect now install **MariaDB**, rather than MySQL.

Pre-existing Connect installations that had the Connect MySQL component installed will be migrated to MariaDB at installation time. Connect will continue to work with any customer provided MySQL databases that were present prior to Connect being installed. (SHARED-83135)

### Note

The database migration process might take some considerable time (many minutes). The time taken is dependent upon the size of the existing Connect MySQL database.

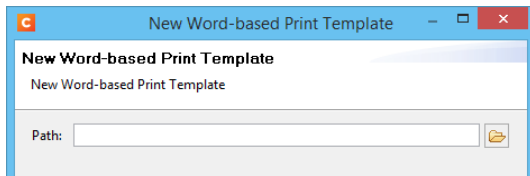
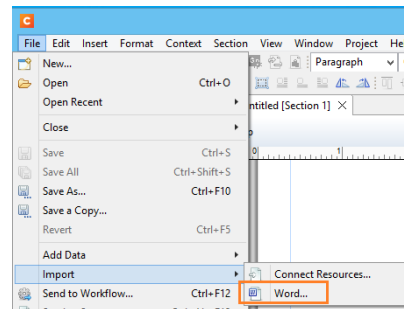
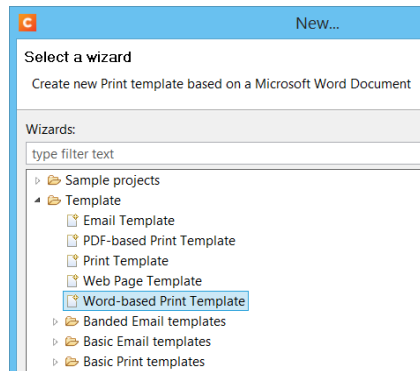
## Server Configuration

The Server configuration tool was not saving changes for Connect Server connection user ("olc-user" by default) correctly, if the new entry used the same password as the previous user. This could cause engines to stop talking to the Connect Server under certain circumstances. This has been fixed. (SHARED-84937)

# OL Connect 2022.1 Designer Improvements

## Import Microsoft Word documents into print Templates

Added the ability to create new print Templates from Word documents and to import Word documents into an existing Templates. (SHARED-83760)



The import uses the original Word document page size, margins, text formatting, lists, graphics, TextBoxes and even mail-merge information.

The contents of the Word file are added to the first Section in the Connect Template. Mail merge place holders in Word documents are used to create a datamodel and userscripts. Images are written to the Images folder and a base stylesheet is added to the Stylesheets panel. TextBox objects are converted to <div> elements.

## HTML templating using Handlebars

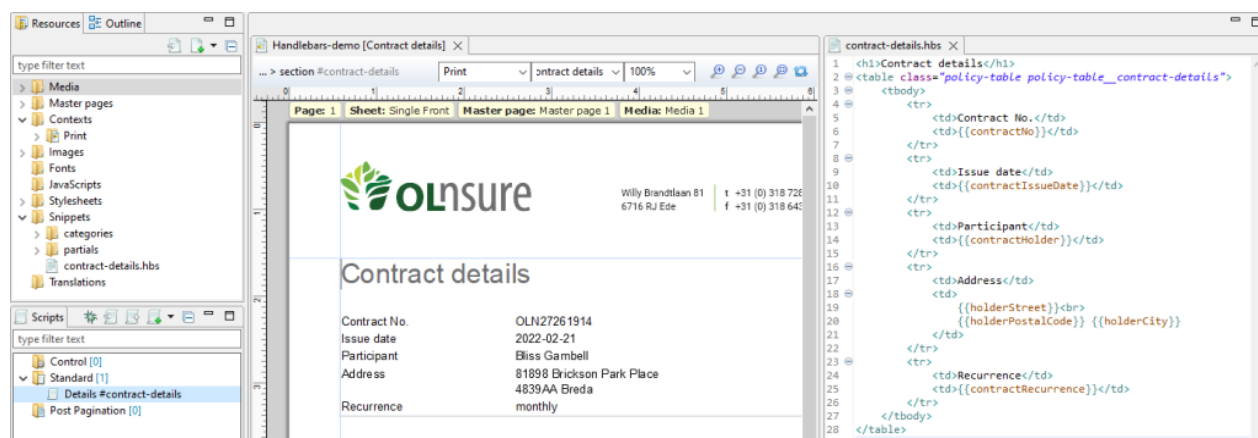
Provided new functionality that reduces the amount of scripting needed to create placeholder heavy and modular design templates. (SHARED-83543)

If you've ever created OL Connect Designer templates for long documents like contracts and insurance policies, you're undoubtedly familiar with snippets. Snippet-heavy templates can become hard to maintain when each snippet requires multiple scripts to apply personalization

and conditions. It requires the snippets and scripts to be thoughtfully organized (grouping, naming conventions, search optimizations). But even then, things can become cluttered and may even impact the overall performance of your template.

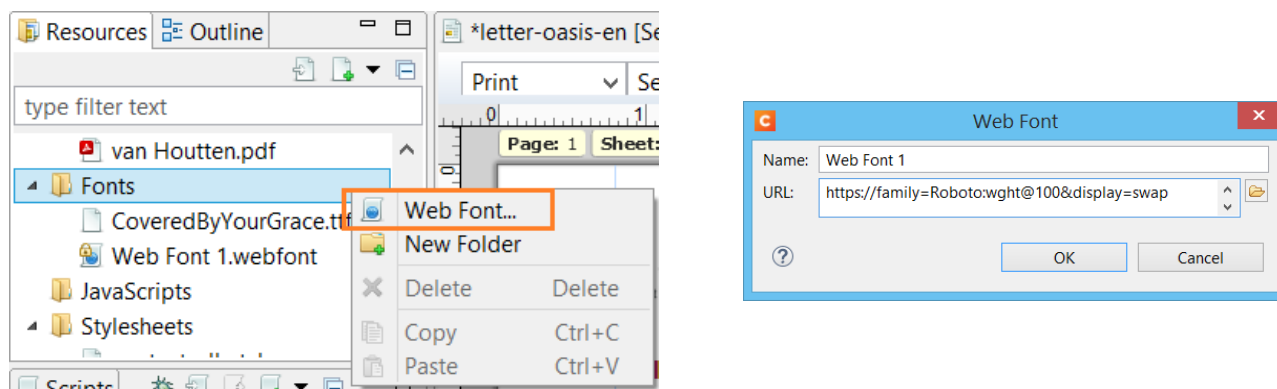
Users with a background in web design may be familiar with the [Handlebars](#) library. It is a popular templating library that provides a simple way to merge HTML snippets with data. This library has now been added to OL Connect Designer.

The Handlebars template snippets in OL Connect Designer will vastly reduce the number of scripts for the mentioned document types and help keep templates lean by creating semantic snippets.



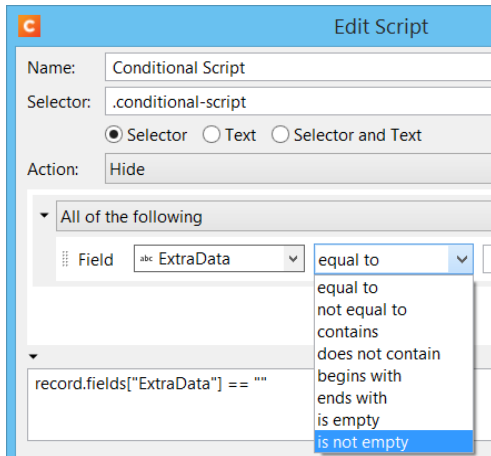
## Improved Web Font support

The OL Connect Designer already supported web fonts, but only via CSS Stylesheets. To simplify this, an option has been added to the Fonts folder to directly add remote fonts. (SHARED-78790)



## Conditional Script improvements

To further simplify Conditional Scripts, we have added two new conditions `is empty` and `is not empty`. (SHARED-81585).

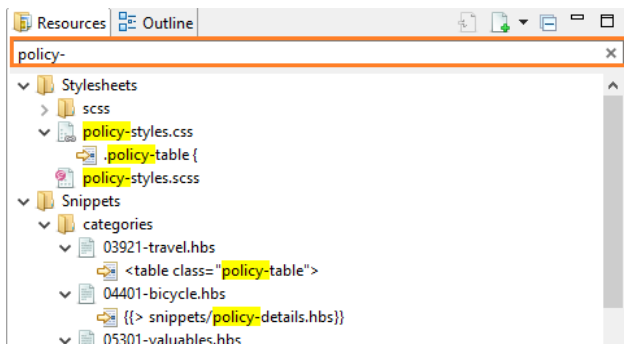


## Search across Resources

The **Resources** panel has been expanded with a filter option. (SHARED-83845)

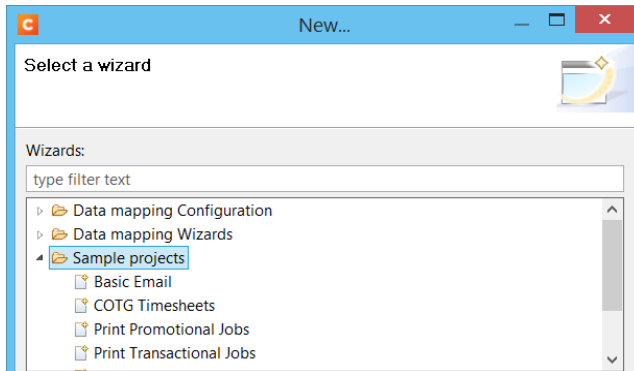
This allows searching across master pages, sections, stylesheets and snippets.

The search results are grouped into the files containing the search term showing a preview and indicator of the term in each file.

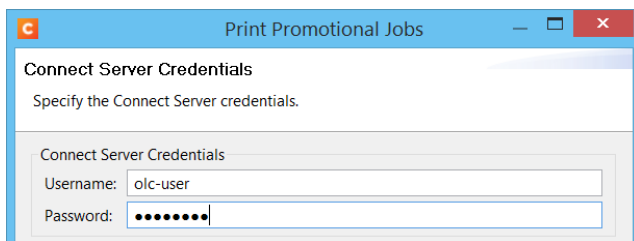


## Sample Projects

- The *Project Wizards* feature has been renamed *Sample projects* to reduce potential confusion with the newly introduced Version Control **Project** concept. (SHARED-84804)



- Sample project Wizards now include a credentials page in which you can set the username & password for the Workflow configuration. (SHARED-84338)



## General Designer Improvements

- Fixed a problem with HTML snippets saved in source mode not actually saving the changes. (SHARED-80971)
- Refresh types button in text scripts now enabled when needed. (SHARED-82014)
- Templates are now still considered "changed" after making changes, saving and then undoing those changes. (SHARED-83254)
- **Send to Server** dialog made wider. (SHARED-83636)
- **Dynamic Tables:** The `data-show-row` option for TR elements in `THEAD` and `TFOOT` can now be set to *start-of-table* to have the row appear only in the first (or only) instance of the TABLE. (SHARED-84135)
- Connect will now continue to recognize remote translation files after a template is saved, closed and then reopened. (SHARED-84825)
- Updated 3rd party library to fix issues with **USPS IMb** barcodes. (SHARED-84847)

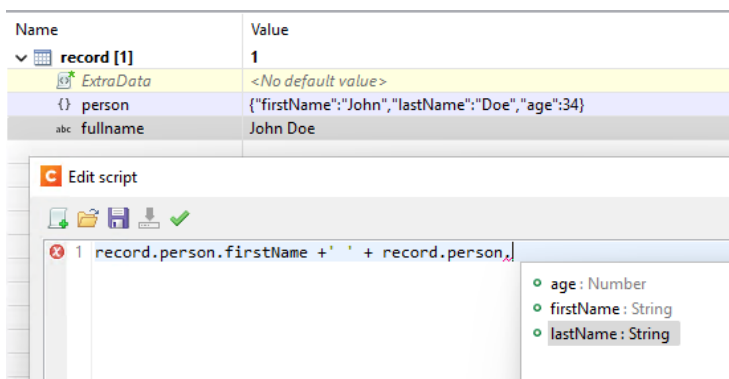


## OL Connect 2022.1 DataMapper Improvements

### JSON Field Type added

Added a JSON field type that allows storing JSON objects in the data model. (SHARED-83707)

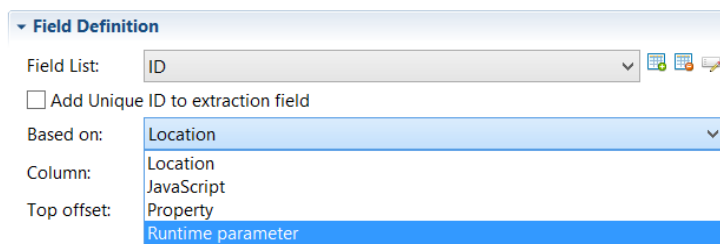
The DataMapper and the Designer automatically parse the contents of these fields and allow you to address each individual property as if it were a field of its own. The Script Editors in both modules even offer code completion as you type.



### Runtime Parameters added

Runtime parameters are now directly available for some steps. (SHARED-82079)

The **Condition** step and **Repeat** step *Based on* property, and the **Extract** step *Mode* property now have Runtime parameter as an available option.



### MariaDB support

The Connect DataMapper now supports MariaDB data sources. (SHARED-83314)

## General DataMapper Improvements

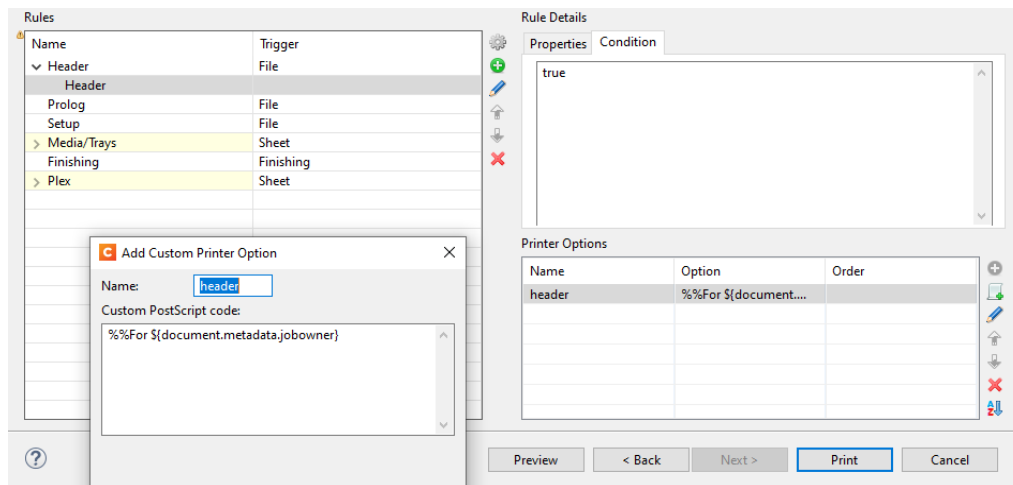
- The Ignore CR/LF at end of file option now also Ignores trailing Form Feed characters (FF) in data files. (SHARED-67112)
- Added a new method named `isRuntime()`, to determine whether the data mapping process is currently running in debug or runtime mode. (SHARED-80858)
- Fixed a problem with runtime parameter initialization. (SHARED81747-)
- Datamapper now supports JSON data using UTF-16 and UTF-32 encoding. (SHARED-83886)
- Fixed Automatic Date parser for dates with negative time zone with non-zero minutes. (SHARED-83528)
- Incorrect code completion suggestions for Arrays in JavaScript have been fixed. (SHARED-83719)
- Fixed boundaries behaviour in TEXT emulation when the "Ignore CR/LF at end of file" option was set. (SHARED-83980)

## OL Connect 2022.1 Output Improvements

### Tweak Postscript Headers

Raw Postscript can now be inserted at the header level. (SHARED-83380)

Certain printers require very specific information in their header comments to work correctly. Although this could already be handled through custom Printer Definitions, it can now also be done directly through Dynamic PPD mode.



The inserts are added in the order they appear.

### Use system fonts as fallback for missing input file fonts

When fonts are missing in input files (PDF, PostScript, etc.), it is now possible to have Connect use system fonts if the same fonts are installed locally. (SHARED-54777)

At the moment this is a technical preview feature, which requires manually editing the OL-outputpreset file, thus:

```
<fontSubstitutionConfig>
<pluginId>0</pluginId>
<useSystemFonts>true</useSystemFonts>
</fontSubstitutionConfig>
```

## General Output Improvements

- Improved error/warning messaging. (SHARED-75666)
- When the output engine flattening a transparency in a PDF file takes more than a minute, it will now logs messages to report progress on the flattening operation. (SHARED-81683)
- It is now possible to change the default SMTP timeouts of the Merge Engine via setting system properties in the ini file. (SHARED-82202)
- Added support for web font files (\*.woff) in AddText components of custom Enhance workflows. (SHARED-83567\83587)
- Prevented an "Attempt to paginate an already paginated DOM" error that could occur when scripts called merge.section.paginate() function. (SHARED-84276)
- Improved handling of Open Type Format (OTF) fonts. (SHARED-84502)
- Cloning a section that contained a dynamic table would break the expansion/pagination of the table. This has now been fixed. (SHARED-84891)
- Updated 3rd party library to fix issues with **USPS IMb** barcodes in output. (SHARED-85117)

## Email Output Improvements

- Email content now always created through OL Connect Server. (SHARED-28569)

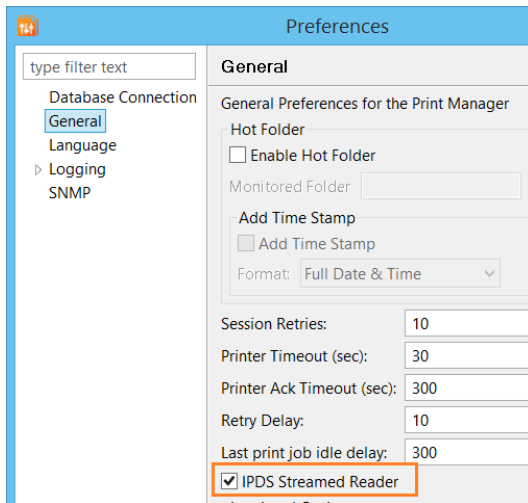
## Print Output Improvements

- Fixed issue in Dynamic PPD to include missing %EndPageSetup. (SHARED-83388)
- "*Timeout errors*" could sometimes be encountered when connecting to a remote printer from Connect server. The timeout values have now been optimized to fix this issue. (SHARED-83532)
- Fixed an error occurring in PDF output for certain types of images when image optimization is enabled (Indexed with a base colorspace that is not DeviceRGB/Gray/CMYK). (SHARED-83559)
- Media items in DynamicPPD Output presets are now optional. (SHARED-83827)
- Crop marks were incorrectly positioned on the back side of duplex output sheets when using 90 or 270 degrees rotated impositioning. This has been fixed. (SHARED-84770)
- Fixed issues encountered in templates that use JQuery for setting up dynamic tables. (SHARED-84814)

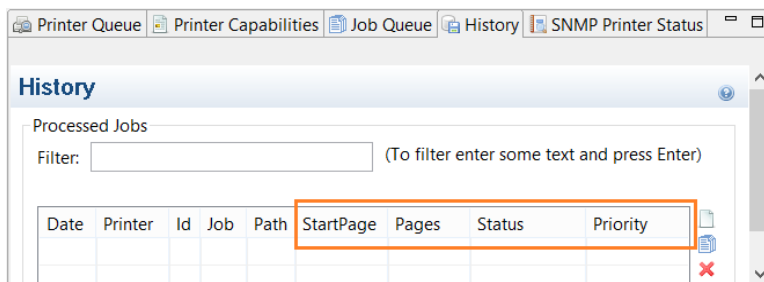
- Improved handling of PDFs with Transparency Groups when using Imposition. (SHARED-84914)
- **AFD and IPDS** improvements
  - IPDS jobs that contained many barcodes were failing to print. The handling of barcodes has been changed to address this issue. (SHARED-83927)
  - IPDS and AFPDS advanced logging now contains extra information on forms and images used. (SHARED-84202)
  - Updated handling of PDF with Transparency Groups when using Imposition in IPDS output. This has resulted in improved processing times and smaller spool-file output. (SHARED-84914)
  - To address an issue with IPDS Duplex printing starting out of sync after a restart, we now include Plex commands at the start of each physical sheet. (SHARED-84916)

## OL Connect 2022.1 Print Manager Improvements

- A problem was encountered on some IPDS printers, which would freeze after a period of time. This was due to issues with reading responses from the printer. A new "*IPDS streamed Reader*" preference has been added to the **Print Manager Preferences**, to cater for printers that experience this issue. (SHARED-84485)



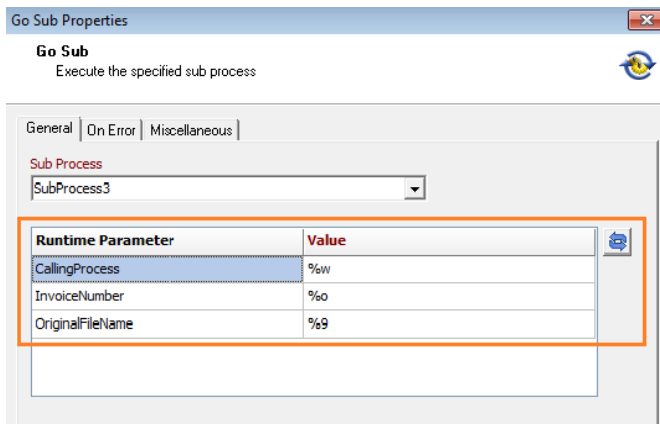
- Extra information now captured and displayed in the PrintManager. The extra information is available in the **History** and **Preview** panes. (SHARED-85054)



# Workflow 2022.1 Improvements

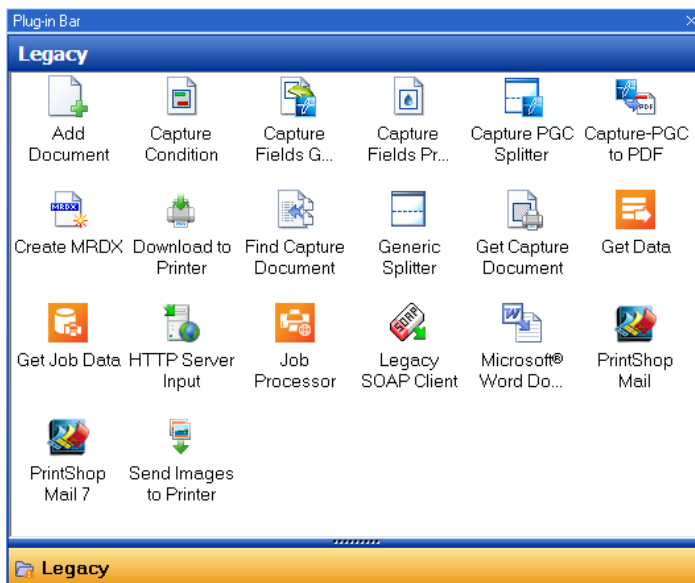
## Runtime variables added to Go Sub

Introduced an easy way to use runtime variables in sub-processes of Workflow. (SHARED-79248)



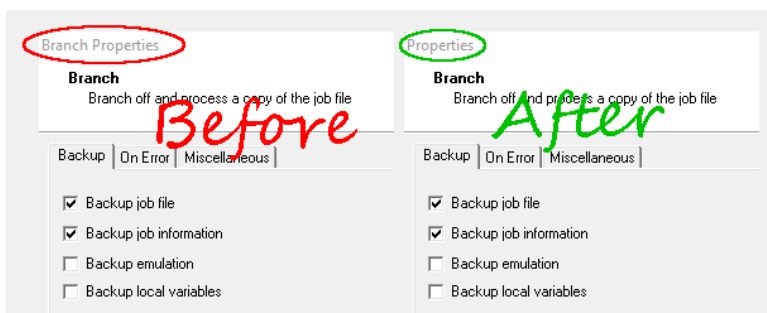
## Legacy Plugins

A new plugin category has added for legacy plugins. These are plugins that are deprecated, and thus should not really be used in contemporary Workflow projects. (SHARED-84674)



## General Workflow Improvements

- A *CaptureOnTheGo* plugin issue was fixed where defining a cover page with some specific PNG files caused a warning dialog to appear when debugging the process, causing the Workflow service to hang. (SHARED-59456)
- Improved handling of long paths to templates in the Merge Engine. (SHARED-79100)
- Fixed issue with repeated credentials request in **Create Web Content** plugin when NodeJS server input is used in process. (SHARED-79390)
- Enhanced security added for all **Microsoft365** plugins utilizing Microsoft Graph. (SHARED-80932)
- Improved support for updated Connect Template or DataMapping runtime parameters in Workflow plugins. (SHARED-81282/83144)
- Plugin dialog names changed to just "Properties" throughout Workflow. (SHARED-84669)



- Fixed catastrophic failure that could sometime happen in **Create Job** plugin. (SHARED-81011)
- Protocol mismatch error has been made clearer, when detected upon Connect server connection. (SHARED-81434)
- Fixed an issue with Telnet Helper Service not receiving files properly and keeping client connections open indefinitely. (SHARED-83088)
- The **FPT Input** and **FTP Output** plugins could modify the structure (line endings) of PDF files on some FTP systems. This issue has been fixed by ensuring file transfer is now always set to binary. (SHARED-83900)
- Fixed errors that could sometimes occur when sending email messages with PDF attachments through the **SendGrid** and **Mailjet** plugins. (SHARED-84312)
- An issue was fixed where installing a custom plugin on a brand new install of Workflow could fail with an error message saying that a "module cannot be found". (SHARED-84491)



- Local variable values were incorrectly assigned to any global variable of the same name. This has been fixed. (SHARED-84521)
- Fixed an issue where template names starting with a number could cause an error in the **Render Email Content** plugin. (SHARED-84619)
- Memory leak fixed in the **DocuWare** plugins. (SHARED-84644)
- Fixed issues with **OL Connect Send** solutions containing printed files names with a single quote (') character in the file name. (SHARED-84940)
- Memory leak fixed in the **PDF/A-3 Attachment** plugin. (SHARED-85011)

# OL Connect 2022.1 Improvements

## Security and Installer improvements

- Connect dependencies have been updated. (SHARED-83698)
- The Adobe PDF Library and PDF Converter libraries were updated to their latest version. (SHARED-83712)
- Improved resilience of Server connection. The Maximum queues setting has been removed from the **Server Configuration** preferences. The value is now automatically optimized, based on the maximum threads setting. (SHARED-84029)
- The OL Update Manager included as part of the Connect/Workflow has been updated to version 1.5 in Connect/Workflow 2022.1. (SHARED-85508)
- Updated Windows Service Wrapper library to improve security. (SHARED-85076)
- NodeJS log lib (log4js) updated to improve security (SHARED-85078)
- Upgraded dependencies to protect against Spring vulnerability CVE-2022-22965. (SHARED-85809)

## REST API Improvements

- A new header named `Content-Disposition` has been added to the response of the FileStore download REST endpoints to return the original file name. (SHARED-84592)
- The content creation for email working examples in the Connect REST Cookbook can now correctly connect to a mail server that does not require authentication. (SHARED-83861)

## Known Issues

As of PReS Connect 2018.1 the Known Issues have moved from the Release Notes to the Connect online Help.

They can be found [here](#).