

PrintShop Mail Connect

OL™ Software

Version 1.2
Release Notes

**PrintShop Mail
Connect**

**PlanetPress®
Connect**

**PreS®
Connect**

© 2015 Objectif Lune Inc. All rights reserved. No part of this documentation may be reproduced, transmitted or distributed outside of Objectif Lune or PrintSoft by any means whatsoever without the express written permission of Objectif Lune Inc. Objectif Lune Inc. disclaims responsibility for any errors and omissions in this documentation and accepts no responsibility for damages arising from such inconsistencies or their further consequences of any kind. Objectif Lune Inc reserves the right to alter the information contained in this documentation without notice.

Table of Contents:

WELCOME TO PRINTSHOP MAIL CONNECT!	4
PRINTSHOP MAIL CONNECT: GETTING STARTED.....	6
1. Opening PrintShop Mail® Connect	5
2. Fast Access to Information.....	5
3. Welcome Screen for Getting Started	6
4. Template Options.....	7
5. Template Wizards.....	8
6. The Data Model Panel	9
7. Adding and Deleting Contexts.....	10
8. Inserting Structural (HTML) Elements.....	10
9. Pie Chart Tool.....	11
10. Bar and Line Charts.....	12
11. Inserting Barcodes.....	13
12. Numbered and Bulleted Lists	14
13. Tables	15
14. Locale Setting.....	16
15. PreFlight Option	17
16. Print Wizard	18
17. Data Filtering Options.....	19
18. Separation Options.....	19
19. Finishing.....	20
20. Finishing Options for PostScript Printers	20
21. Media Mapping for PostScript Printers.....	23
22. Conditional Selection of Media	24
23. PDF Options and Signatures.....	25
24. Inserter Options and OMR Settings	27
25. Print Manager for IPDS	28
KNOWN ISSUES	30

PrintShop Mail Connect

Welcome to PrintShop Mail® Connect!

Welcome to PrintShop Mail® Connect, the new and highly dynamic document composition solution from Objectif Lune that allows you to create fully personalised business correspondence across a range of output types.

Key aspects of PrintShop Mail® Connect include the following:

- **Designer** – design tool for creating print and email communications
- **Output** – advanced output and print stream handling across industry-standard print formats
- **Print Manager** – for handling IPDS output

Installing PrintShop Mail® Connect:

Full details on installing and licensing PrintShop Mail® Connect 1.2 can be found in the online help in the installer. Note that PrintShop Mail® Connect 1.2 comes with a 30 day trial license by default.

64 Bit Version Only

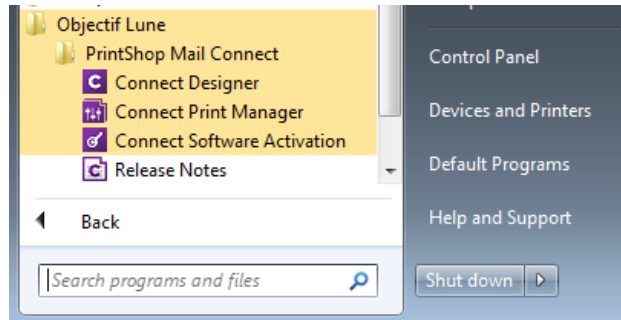
PrintShop Mail® Connect 1.2 is available as a 64 Bit version only.

PrintShop Mail® Connect: Getting Started

This sections provides some basic tips on getting started with PrintShop Mail® Connect as well as details on some of the highlights of the application.

1. Opening PrintShop Mail® Connect

After PrintShop Mail® Connect has been installed, it can be opened via the following options in the Start menu:

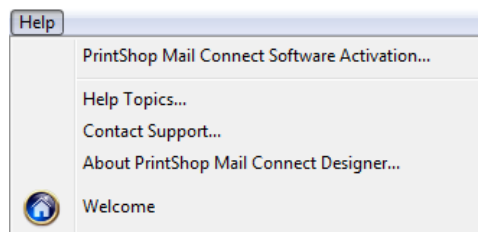


- **Connect Designer** - opens the PrintShop Mail® Connect Design Tool
- **Connect Print Manager** – opens the Print Manager tool for scheduling and managing IPDS output
- **Connect Software Activation** – opens the Software Activation tool which allows you to load a license file and view the terms of the End User License Agreement.
- **Release Notes** – Opens the current version of the PrintShop Mail® Connect Release Notes

Note that in the current version the **user interface is only supported in English**. Other languages will be introduced with later releases. However all languages are supported for creating documents.

2. Fast Access to Information

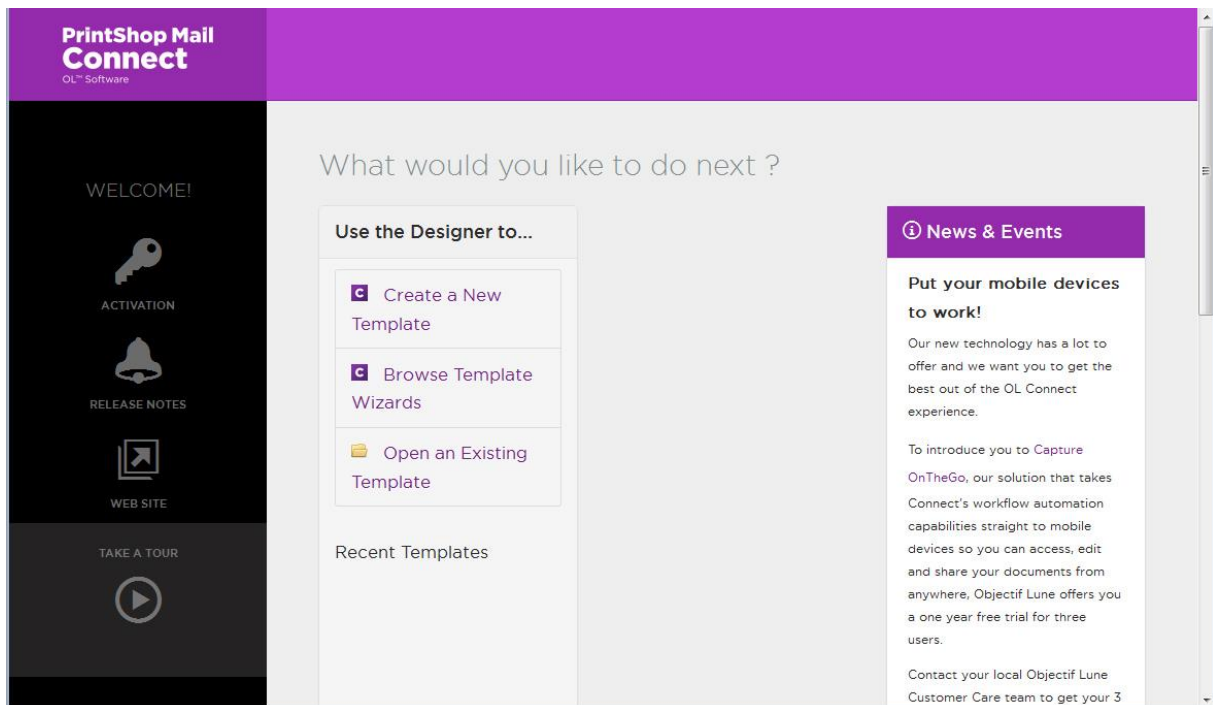
PrintShop Mail® Connect includes an extensive online help system providing detailed information on most areas of the application. Use the “Help Topics” option in the Help menu or press F1 to access the home page of the help:



Note that in Version 1.2, all calls to the online help from the application will default to the home page of the help. Context sensitivity will be introduced to the help system in a later release. This menu also provides access to the PrintShop Mail® Connect “Welcome Screen” which provides wizards and tips for setting up templates.

3. Welcome Screen for Getting Started

When first starting the Connect Designer, a Welcome screen is displayed which helps you to quickly become acquainted with all of the key areas of PrintShop Mail® Connect:



The screen includes the following:

1. A **navigation hub** for your existing templates.
2. Fast access to the available **template wizards**.
3. Handy links to online **Connect courses, documentation and user forums**
4. Easy access to the **Web Activation Manager** for activating your Connect license.
5. Links to the **release notes** for that version of Connect and the associated website
6. **“Take a Tour”** link to online demonstration videos about Connect
7. **“News & Events”** box keeping you up to date with the latest from Objectif Lune.

You can navigate back to the Welcome Screen at any time using the following button:

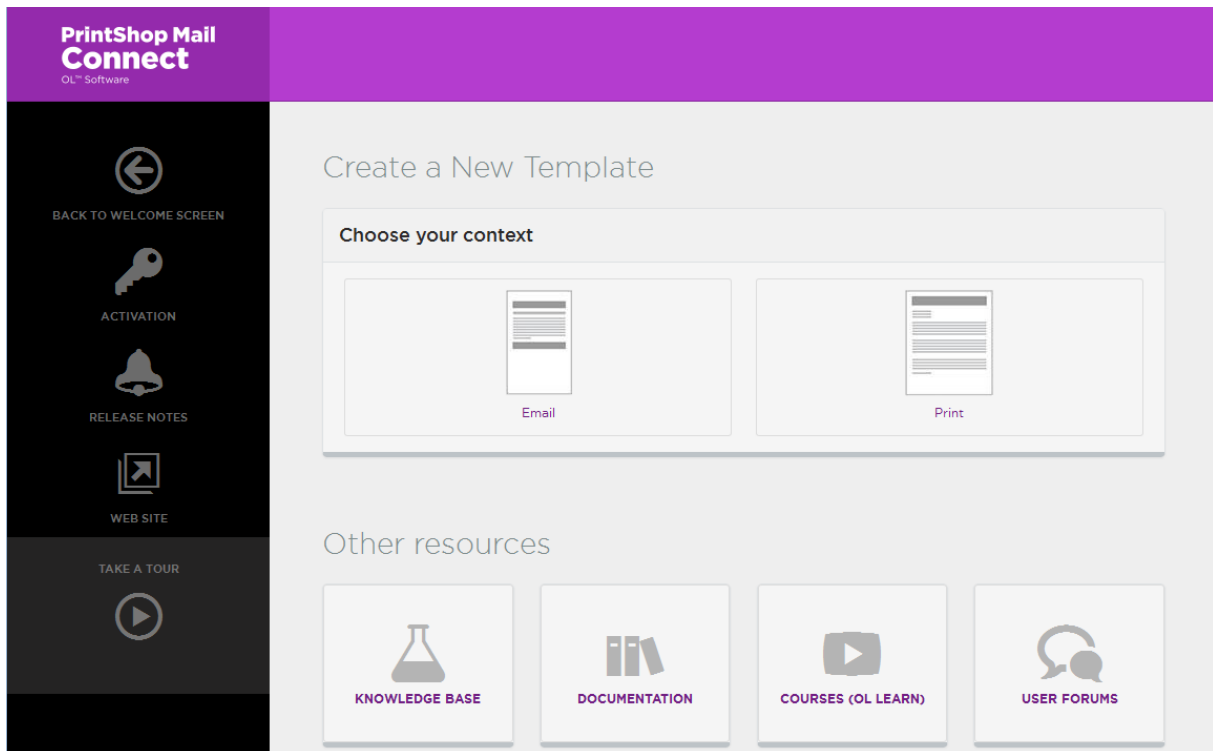


4. Template Options

The Template options in the “Welcome” screen enable you to:

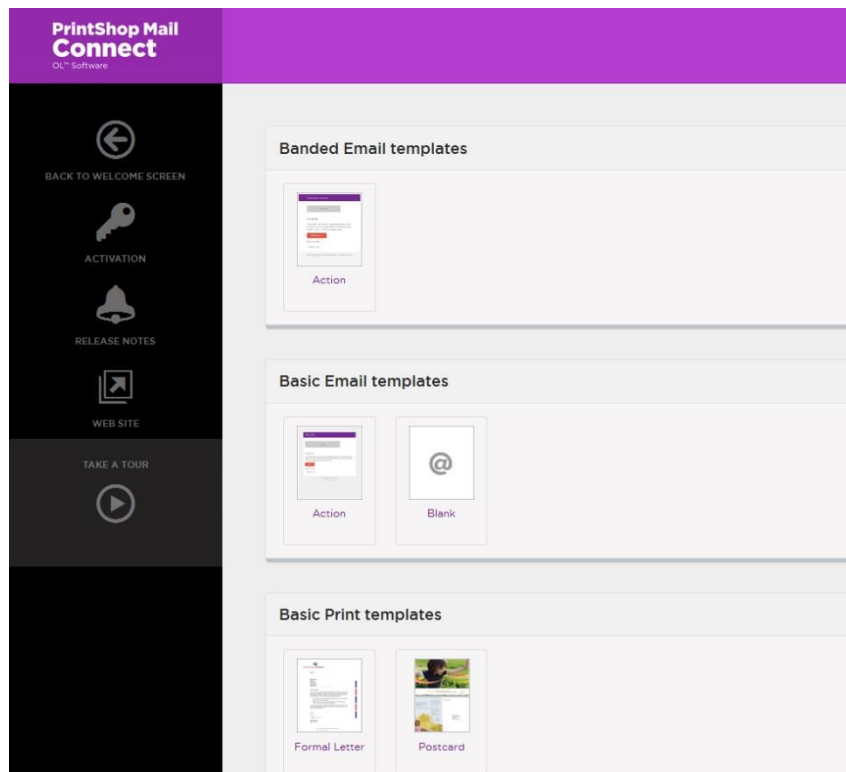
- Create a new Template
- Access the available Template Wizards
- Open an existing Template

The following page is opened when selecting “Create Template” which allows you to select an Email or Print context for your template:

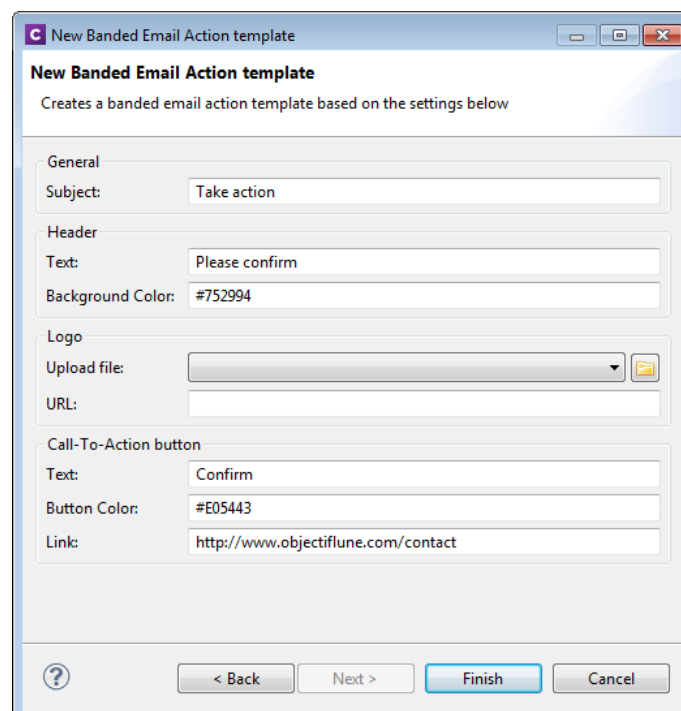


5. Template Wizards

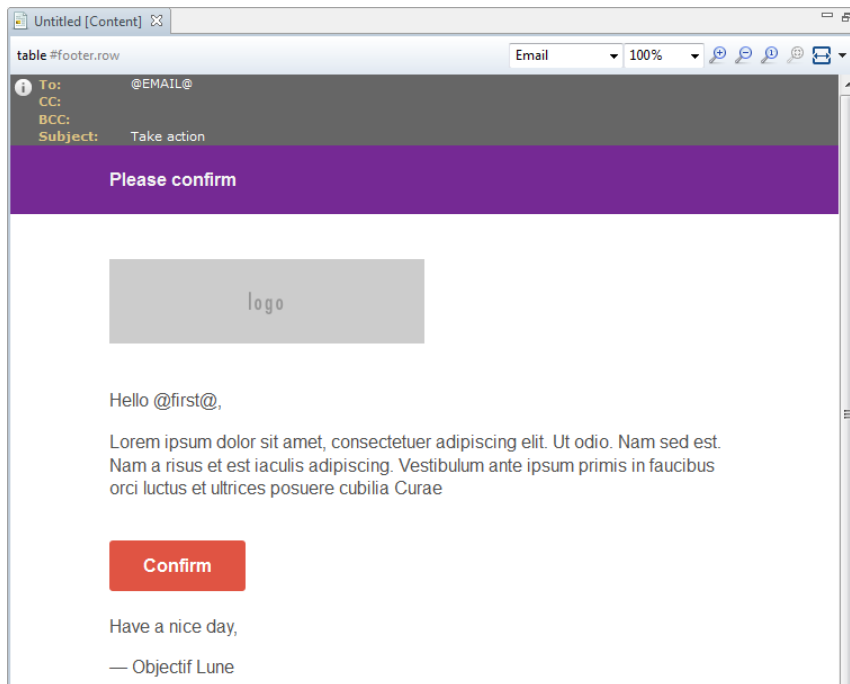
PrintShop Mail® Connect includes various easy-to-use wizards for setting up basic Email and Print templates. To access the wizards click on the Browse Template Wizards button:



Selecting one of the options opens a Wizard in which you can set up basic properties for that context. The following example shows the steps associated with setting up a Banded Email template. The New Banded Email Action Template wizard allows you to specify the colours of the bands, a logo and the subject and header text:

The screenshot shows a Windows-style dialog box titled 'New Banded Email Action template'. The subtitle reads 'Creates a banded email action template based on the settings below'. The dialog is organized into sections: 'General' with a 'Subject' field containing 'Take action'; 'Header' with 'Text' set to 'Please confirm' and 'Background Color' set to '#752994'; 'Logo' with an 'Upload file' button and an empty 'URL' field; and 'Call-To-Action button' with 'Text' set to 'Confirm', 'Button Color' set to '#E05443', and 'Link' set to 'http://www.objectiflune.com/contact'. At the bottom, there are four buttons: a help icon, '< Back', 'Next >', and 'Finish' (highlighted in blue), followed by 'Cancel'.

Clicking “Finish” will create the Banded Email template:



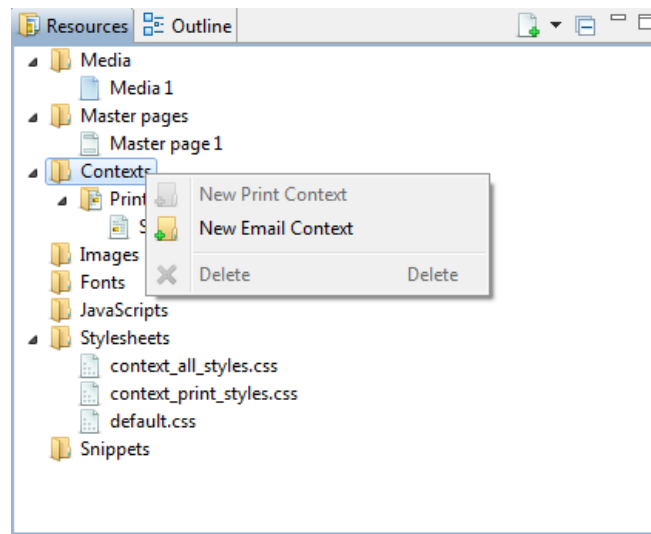
6. The Data Model Panel

The Data Model panel allows you to navigate through data records. You can navigate forwards or backwards using the buttons or enter a number directly in the edit box:

Name	Value
record [11]	1
abc titre	Dr
abc prenom	Trudi
abc nom	HIGGINSON
abc adr1	273 rue de Duguesclin
abc adr2	
abc ville	LYON
abc cp	69003
abc statut	Client

7. Adding and Deleting Contexts

PrintShop Mail® Connect allows you to add and delete a context from a template via corresponding options in the Resources context menu:



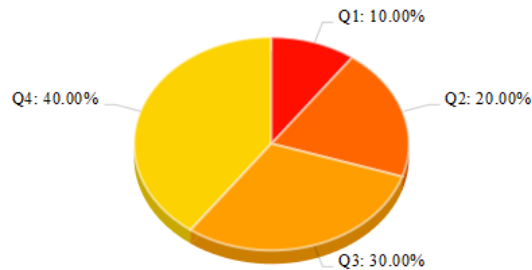
8. Inserting Structural (HTML) Elements


Structural elements can be inserted directly into templates via correspondingly named options in the “Insert” menu.

- Div
- Span
- Article
- Section
- Header
- Footer
- Nav
- Aside

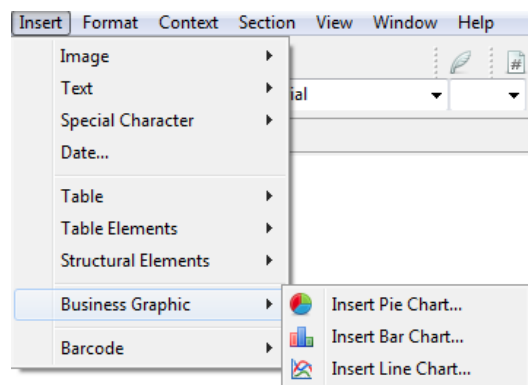
9. Pie Chart Tool

PrintShop Mail® Connect allows you to set up basic 3-dimensional pie charts:

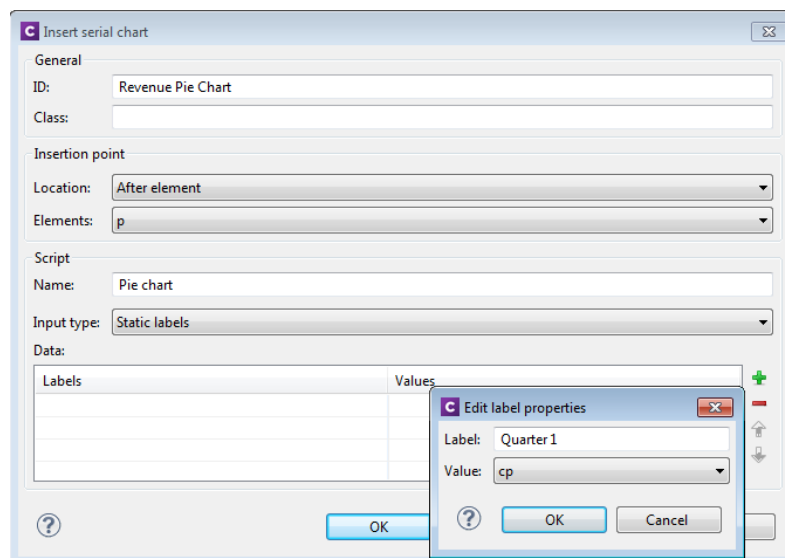


The Pie Chart tool is called via the following icon in the toolbar: 

Or via the Business Graphic option in the Insert menu:

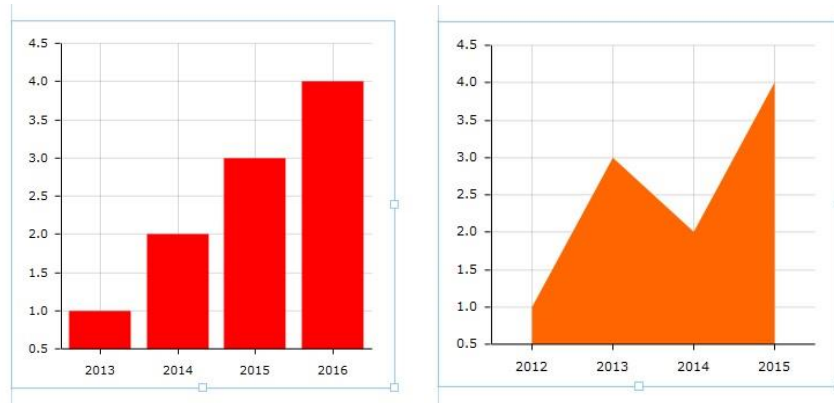


It allows you to specify static or dynamic labels and assign values for each segment:



10. Bar and Line Charts

PrintShop Mail® Connect supports the insertion of basic Bar and Line charts:



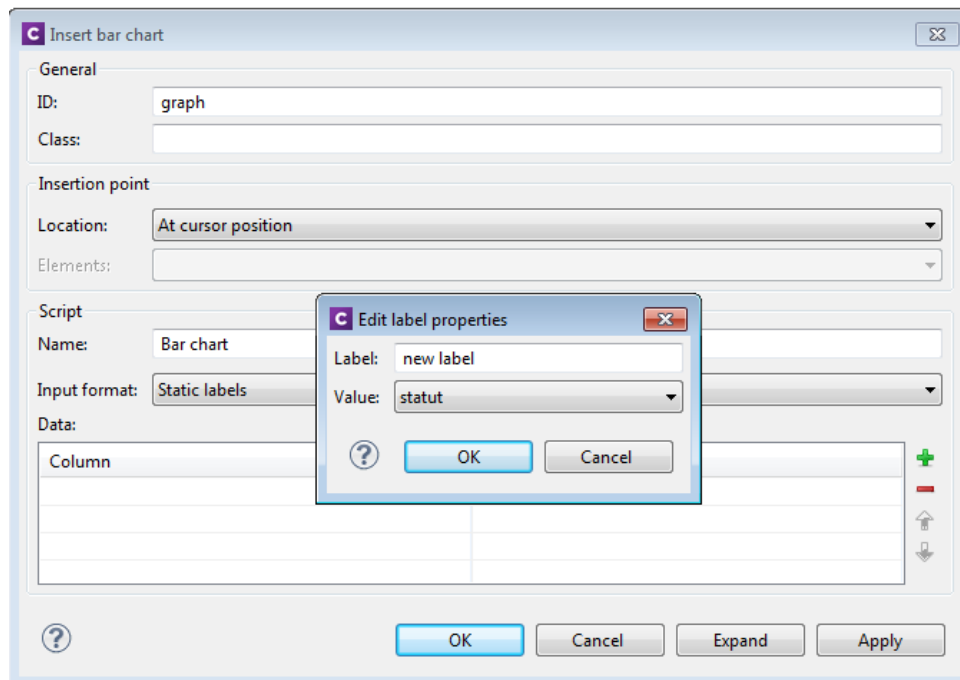
The Bar and Line Chart tools are called via the following buttons in the toolbar:



Or via the Business Graphic option in the Insert menu:



They allow you to specify static or dynamic labels and assign values for each bar or line position:

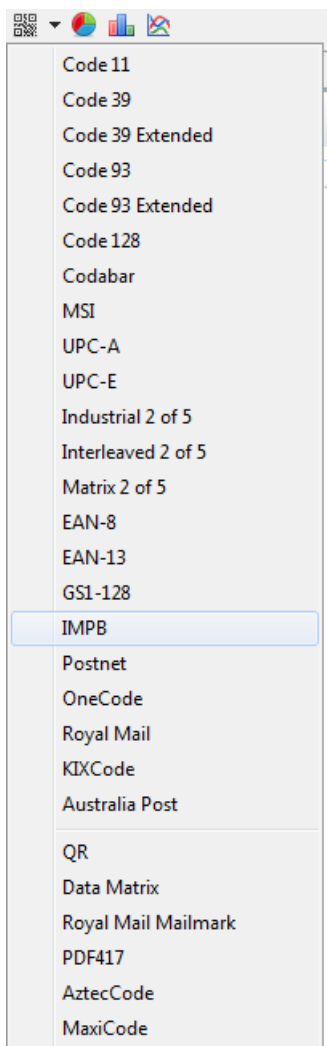


11. Inserting Barcodes

PrintShop Mail® Connect includes a range of 1D and 2D barcode symbologies:



Simply click on the new down arrow next to the Barcode icon in the toolbar to open up a list of available barcodes or go to Insert|Barcode:



After you have selected a barcode type from the list, the Edit Script dialog is opened in which you can specify the value of your barcode.

You can add one-to-many fields for the value of the code by using the green plus button. Each line in the table allows you to specify the following:

- **Prefix** – free text field for specifying static information to prefix the field value
- **Field** – for specifying the required field for the barcode value from a dropdown list
- **Format** – specifies whether the value should be upper case or lower case. Leaving the box blank means display the value as specified in the data
- **Suffix** – free text field for specifying static information after the field value

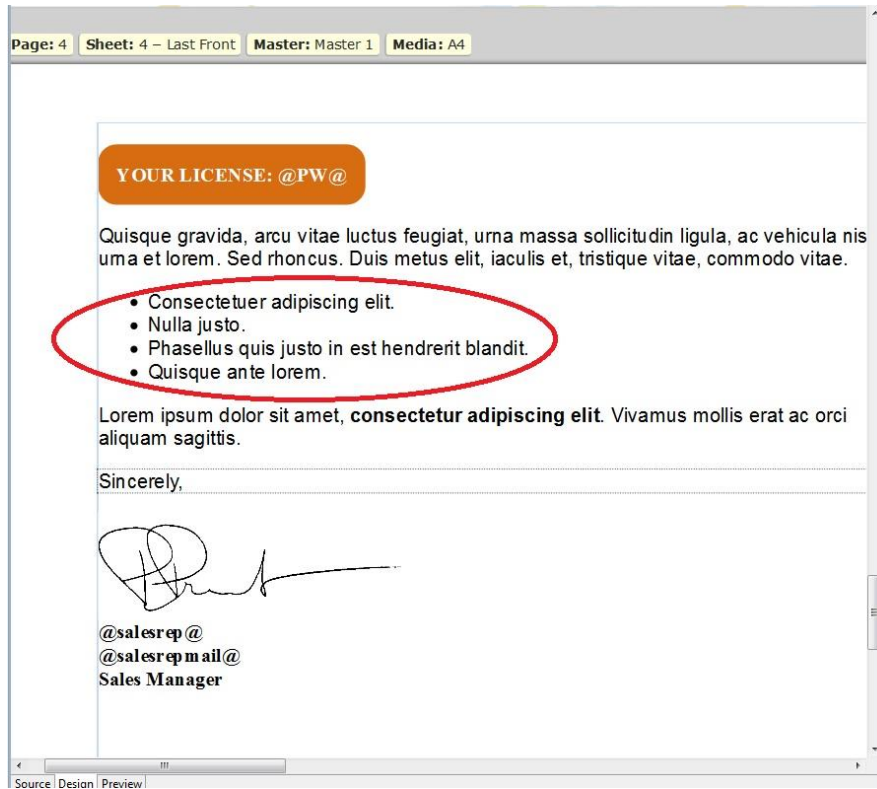


Properties Dialogs for Barcodes:

Each barcode type has its own properties dialog. After inserting the barcode into your template, right-click to open the context menu and select the properties option for the barcode. Different properties dialogs are displayed depending on the barcode type.

12. Numbered and Bulleted Lists

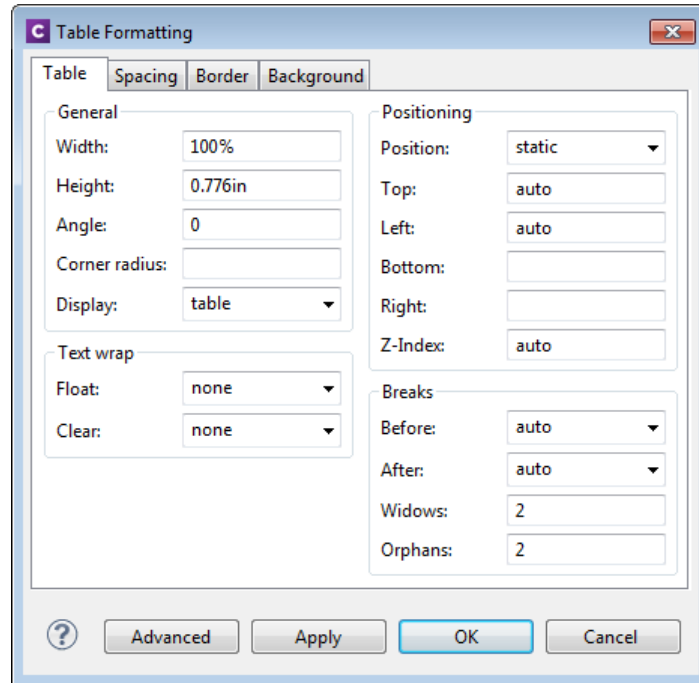
PrintShop Mail® Connect supports numbered and bulleted lists via the following buttons in the toolbar:



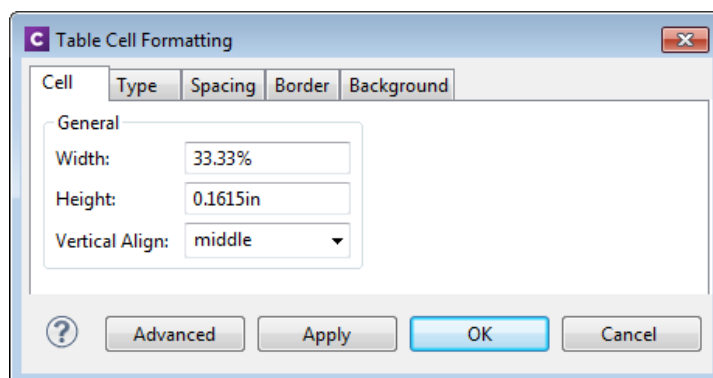
13. Tables

Tables are easy to set up in PrintShop Mail® Connect. Various options are available for specifying the properties of tables.

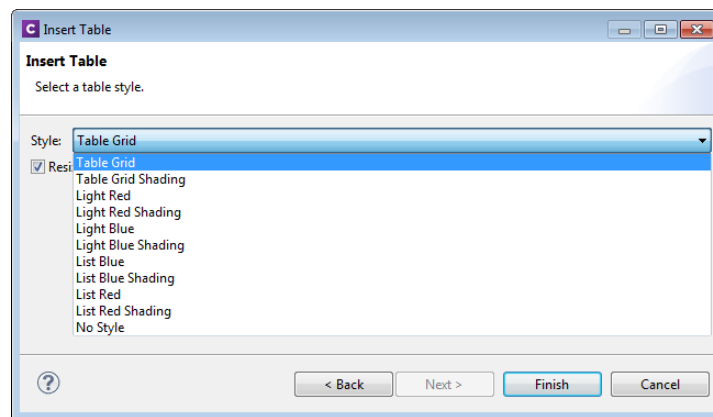
- The **Table Formatting** dialog includes Height, Corner radius and Display settings as well text wrapping and positioning options. Other tabs allow Spacing and the Background to be defined:



- The Table Cell Formatting dialog contains a Height and Width options and a Vertical Align box with a dropdown menu containing the alignment options:

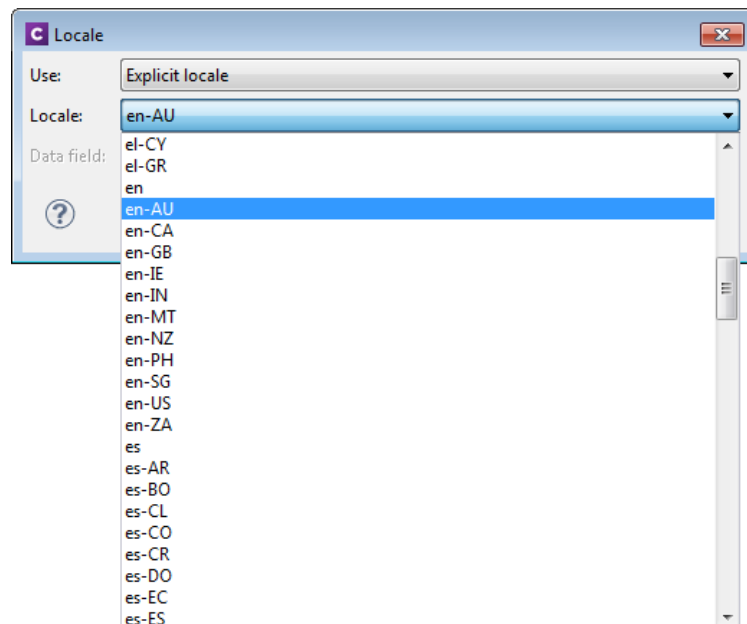


- Various “Style” options are available when inserting a table including a “No Style” option:



14. Locale Setting

A “Locale” can be specified under Edit|Locale:



Setting the locale allows the script wizards to be based on one of the following:

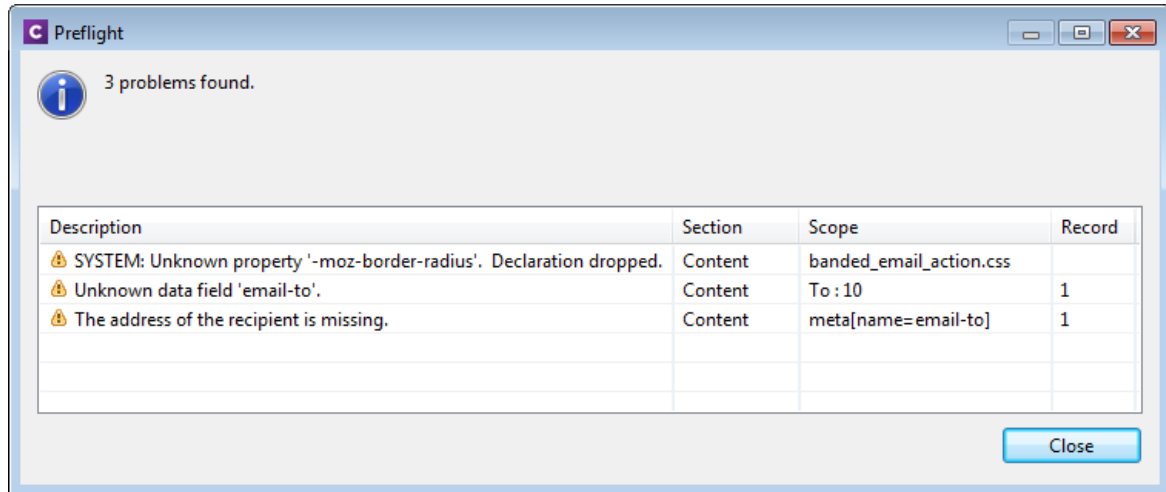
- The System Locale
- An Explicit Locale – choose from a global list in the “Locale” control
- Dependent on a database field which is then specified in the “Data field” control

When the locale is based on a data field, the locale will always correspond to the current record.

When the value of the locale in the field has not been specified or is erroneous (e.g., misspelled or mistyped), the default locale for the Java environment is used.

15. PreFlight Option

A “Preflight” option is available from the Context menu which allows you to validate the records in your template against various errors. Any errors found are listed in the “Preflight” dialog along with the section and record in which they occurred:

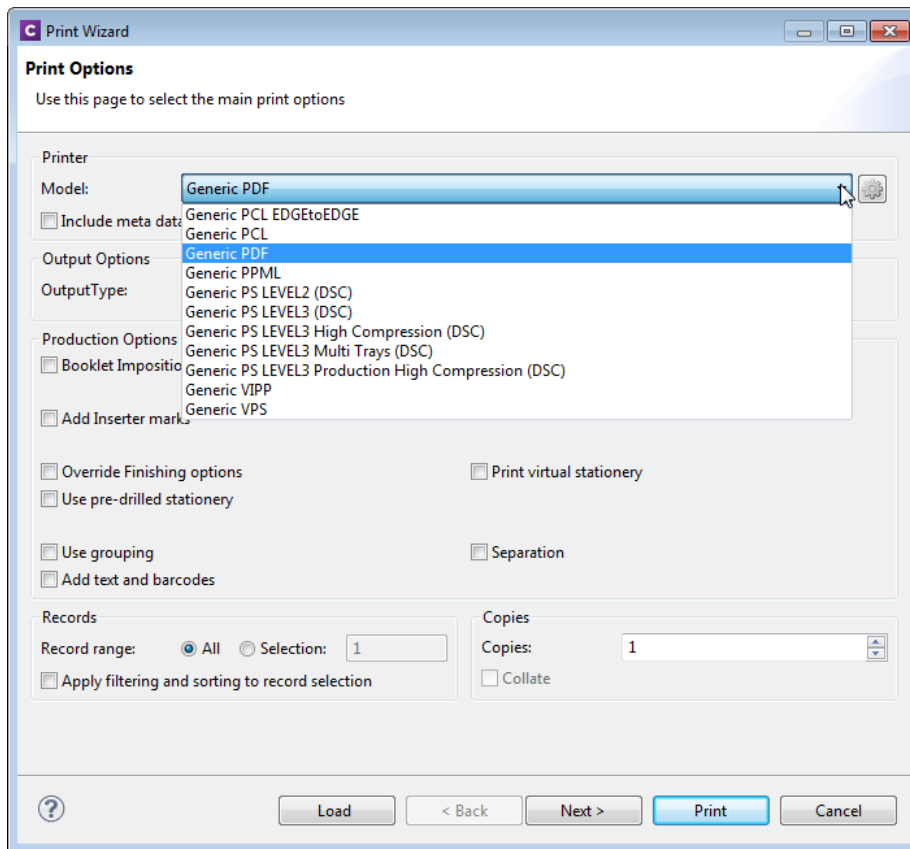


The “Preflight” check looks for the following:

- Missing shared content e.g., missing snippets, resource file not found etc.
- Data integrity – checks each record for workflow errors, currency errors, date errors etc.
- Missing fields – references to missing fields in scripts
- E-mail – common mistakes such as absolute positioned boxes, use of the transform style, <form> and <input> elements, background images, missing e-mail subject, invalid e-mail addresses etc.
- Integrity of hyperlinks
- Load errors
- Missing images
- Content overflow
- Syntax errors
- Custom runtime errors and warnings
- System-generated runtime errors

16. Print Wizard

PrintShop Mail® Connect provides a Print Wizard for easily making your output specific settings. Go File|Print and then select the “Advanced” button in the subsequent dialog to open the wizard:

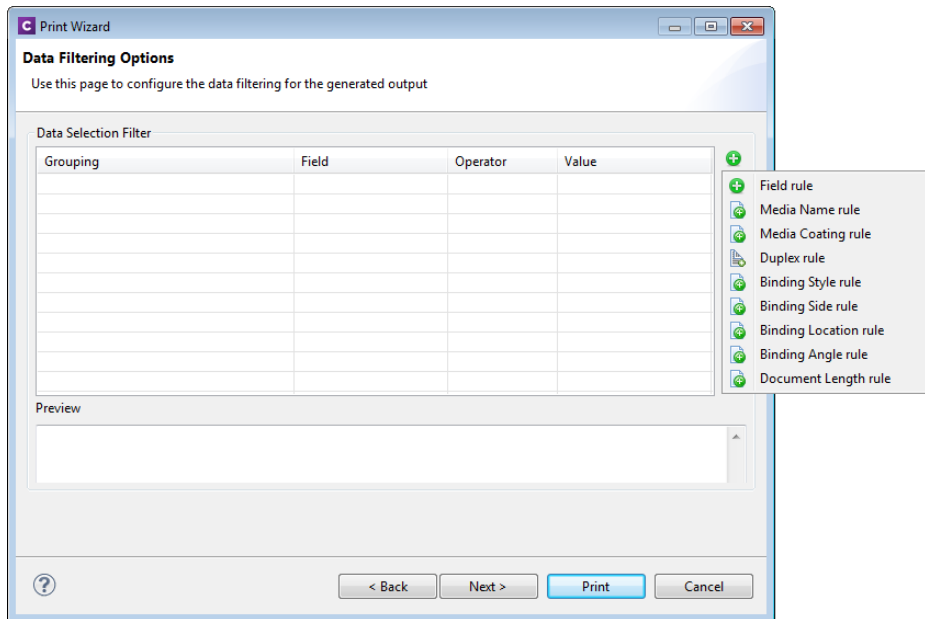


- Select the required “Printer Model” from the dropdown list (dependent on your license)
- Specify the “Output Type” e.g., Windows Printer
- Select the required “Production Options”
- Specify the records to be produced and whether filtering and sorting should be applied
- Specify the number of copies and whether they should be collated.

The following pages of the Print Wizard will then depend on the options you have selected on the start page.

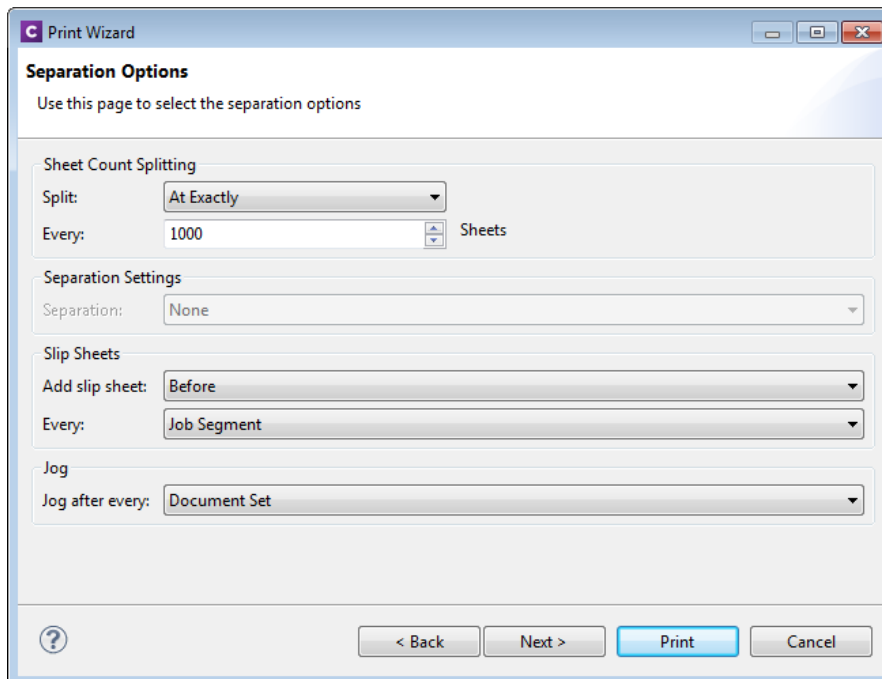
17. Data Filtering Options

The Print Wizard includes various options for filtering data as shown in the following illustration:



18. Separation Options

Separation options, including page count splitting, can be specified on the following page of the Print Wizard:



19. Finishing

The following Finishing options are supported in PrintShop Mail® Connect:

- Tray\media selection, cut & stack and n-up
- Subset stapling of individual documents, corner stapling of both portrait and landscape documents; subset booklet printing and saddle stitching with fixed page count signatures
- Mixed unstapled and subset-stapled documents
- Subset finishing is supported in the output engine.
- Stapling can be applied to a complete document with sub sections
- Jogging
- Slipsheet capabilities in the Printer Definition config
- Finishing at document level for PCL, AFPDS and IPDS
- Finishing at section level for PS, PCL, AFPDS, IPDS

20. Finishing Options for PostScript® Printers

PrintShop Mail® Connect supports Finishing on a document level for any PostScript® printer:

- The Finishing options are governed by a Printer Definition Configuration (PDC) file which must be loaded in the Advanced settings in the Print Wizard.
- The PDC needs to contain all of the finishing settings available to your PostScript® printer.
- The PDC provides more power and flexibility than a regular PPD in that it allows the inclusion of logic and conditional processing and also forms a basis for extending this power to other datastreams in the future.
- The PDC files are created and supplied by the Objectif Lune Support Team. Please contact your local Support team for more information.
- Some example PDC's are provided as a reference (ol.printerdefinition).

The following shows an extract from an example PDC:

```
<property name="setFinishing" fromScope="SET" toScope="FILE" count="false">
  <attribute name="staple" default="0">getStapleValue(set)</attribute>
  <attribute name="stapleLocation" default="None">getStapleLocation(set)</attribute>
  <attribute name="punch" default="0">getPunchValue(set)</attribute>
  <attribute name="punchLocation" default="0">getPunchLocation(set)</attribute>
</property >
```

Why is using a PDC more powerful than a PPD?

Using a PDC provides more power and flexibility because it allows you to:

- Gather information about the job as a whole (e.g., the media and finishing settings used, number of pages, number of documents, etc.)
- Conditionally insert commands (e.g., only put a setpagedevice at the beginning/end of a sheet instead of at each logical page)
- Define subset finishing (e.g., perform actions on document, set, segment and job boundaries)
- Perform logically related settings in a single command (e.g., all the media-related settings are in a single insert, avoiding the possibility of specifying one setting but not the other)
- A PPD only allows you to select from a list of values (which is usually a closed list) while a PDC allows you to insert properly encoded arbitrary values (e.g., names, colours, weights of media which may not be included in a PPD)

What is the relationship between the PDC and the Finishing settings in the GUI?

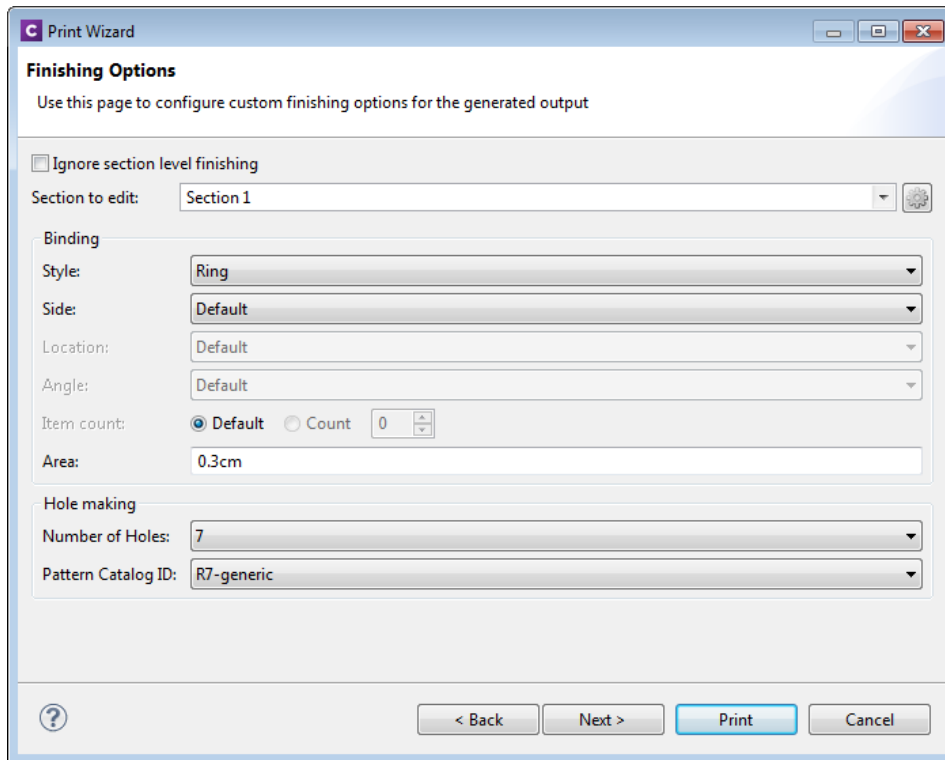
The PDC enables the Finishing controls in the PrintShop Mail® Connect Designer GUI. It specifies which Finishing controls set in the GUI will be applied on production of the template.

For example, if you select “Stapled” in the Designer, stapling will only be applied providing it is supported in the PDC.

In other words, all of the Finishing options are available for selection in the GUI but they must be present in the associated PDC in order for them to work.

What about the Override Finishing options in the Print Wizard?

Any “Binding” or “Hole Making” option set in the Designer which is supported by the PDC can be overridden by the corresponding settings in the Print Wizard:



- Specify the style of binding e.g., Ring, Stapled, Glued, Stitched etc.
- Specify the location, area and angle of the binding
- Specify the number of holes required and the pattern.
- Note the the “Section to edit” control is not currently supported

Overriding Finishing in Multiple Sections

Ignore Section level finishing and apply all finishing at a document level

To do this, check the "Ignore section level finishing" checkbox and set the required binding and hole options. At print time this will apply the specified finishing options to the entire document rather than applying finishing at individual section levels. For example, if a template has 2 sections and document level stapling is applied, the pages from both sections will be combined and stapled as one single document.

Override a combination of document and section finishing

In this scenario, uncheck the "Ignore section level finishing" checkbox and use the “section to edit” combo box to select the required finishing settings for document and section levels. For example, if you had a two section template you could apply stapling on each of the sections individually and then apply ring binding to the entire document. This would result in a ring bound document consisting of two stapled sections.

Ignore document level finishing and override section level finishing

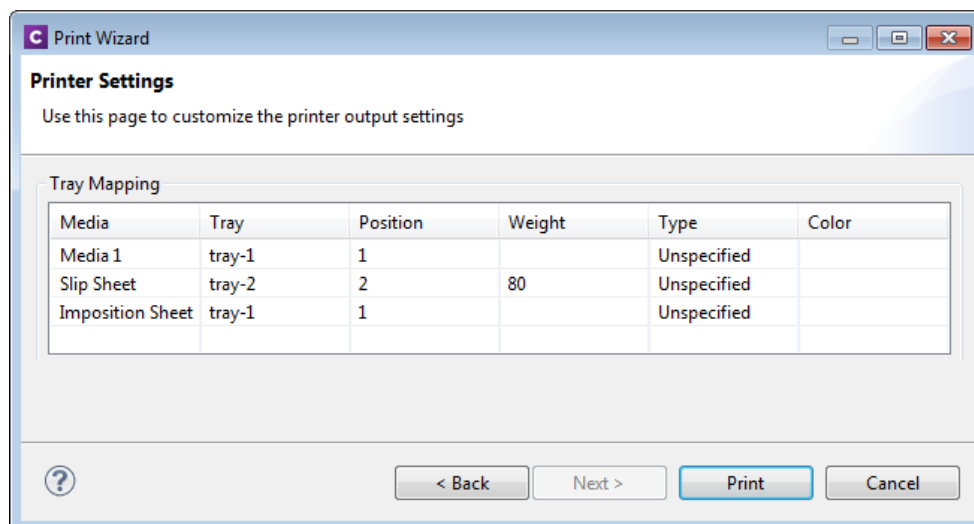
In this scenario you would perform the following:

- Uncheck the "Ignore section level finishing" checkbox
- Select document finishing in the combo box and specify "None" for the binding style
- Select the other sections in the combo box and apply the required finishing settings

The result would be a document where the required binding finishing is applied to each section in the document but no overall binding finishing is applied to the entire document.

21. Media Mapping for PostScript Printers

PrintShop Mail® Connect provides two types of mapping to PostScript printers (Media and Properties) using the Tray Mapping table in the Printer Settings:



- The table has six columns which allow the user to specify any combination of position, weight, type and colour
- At least one of the position, weight, type and colour values must be specified. e.g. the user could specify a weight of 80 and leave all the other fields blank
- Setting the value for a tray on one line will cause that value to be updated on all other lines in the table that use the same tray name e.g., if there are two media and "tray1" is assigned to each of them, changing the weight on one line will also change the weight in the other line. This keeps the trays in sync.
- When initialised the table will contain one row for each media and will be populated with as much available information from the media (e.g. specified weight, type and colour) although this is limited by the number of trays that are specified in the printerdef.

For example if the template had 3 media:

media1: weight 80, type unspecified
media2: type letterhead, color white
media3: type unspecified

and the selected printerdef had 2 trays:

tray1: 1
tray2: 2

the table would appear as follows:

Media	Tray	Position	Weight	Type	Colour
media1	tray1	1	80	Unspecified	
media2	tray2	2		Unspecified	white
media3	tray1	1	80	Unspecified	

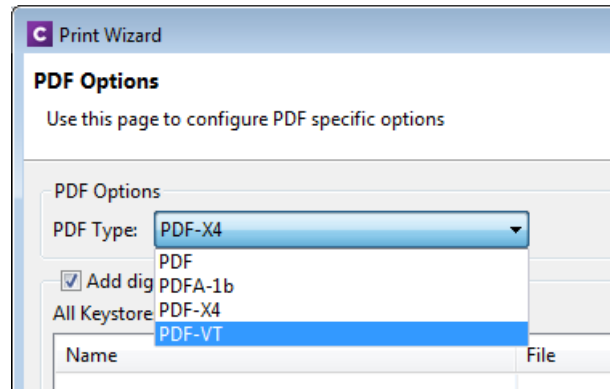
22. Conditional Selection of Media

In some cases it may be necessary to apply different media for the output depending on the value of a data field. The Media to be conditionally specified using scripting for the sheet positions in the current section:

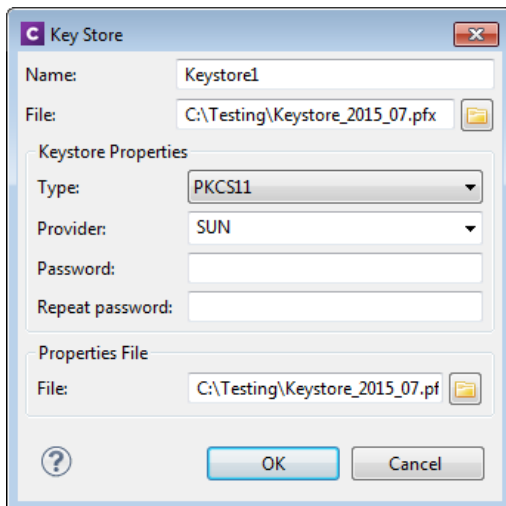
- The media is defined for each sheet position in the Sheet Configuration dialog. The following sheet positions are allowed: first, middle, last, single
- Each Media entry in the Sheet Configuration displays a script icon. Click on the icon to invoke a plain script editor with a script with query selector for that specific section + sheet
- The head element of a print section will automatically receive META elements for each sheet
- The media can be overridden by setting the content attribute of the given META element.
- The content attribute of the META elements will initially be empty i.e., use the media as specified in the Sheet Configuration dialog.
- Media set by scripts are propagated to the Main Editor in Preview and Live mode

23. PDF Options and Signatures

A PDF Options page in the Print Wizard allows you to make PDF-specific settings. It allows you to select the required PDF type (PDF, PDF/A-1b, PDF-X4 and PDF-VT):



It also allows you to set up PDF signatures for your output. First you must set up a Keystore and add it to the All Keystores table. To do so, click on the green plus icon to open the following dialog.



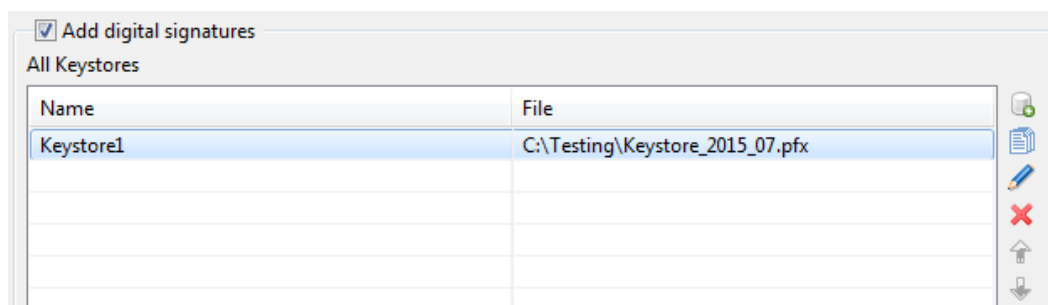
Enter a unique name for the keystore and browse to the required .pfx Personal Information Exchange file.

You must then specify the required Keystore Type (JKS, PKCS11 or PKCS12).

The Provider is set to SUN by default. Note that this entry will sometimes fail in Version 1.0.1 and should be left blank. This is a known issue and will be addressed in a later release.

You must then enter the password associated with your certificate and then browse to the required Properties File i.e., security certificate (format = .cer).

When you have finished making your settings, click OK to add the Keystore to the table (note that if a Keystore is assigned to a signature, it cannot be deleted from the list):



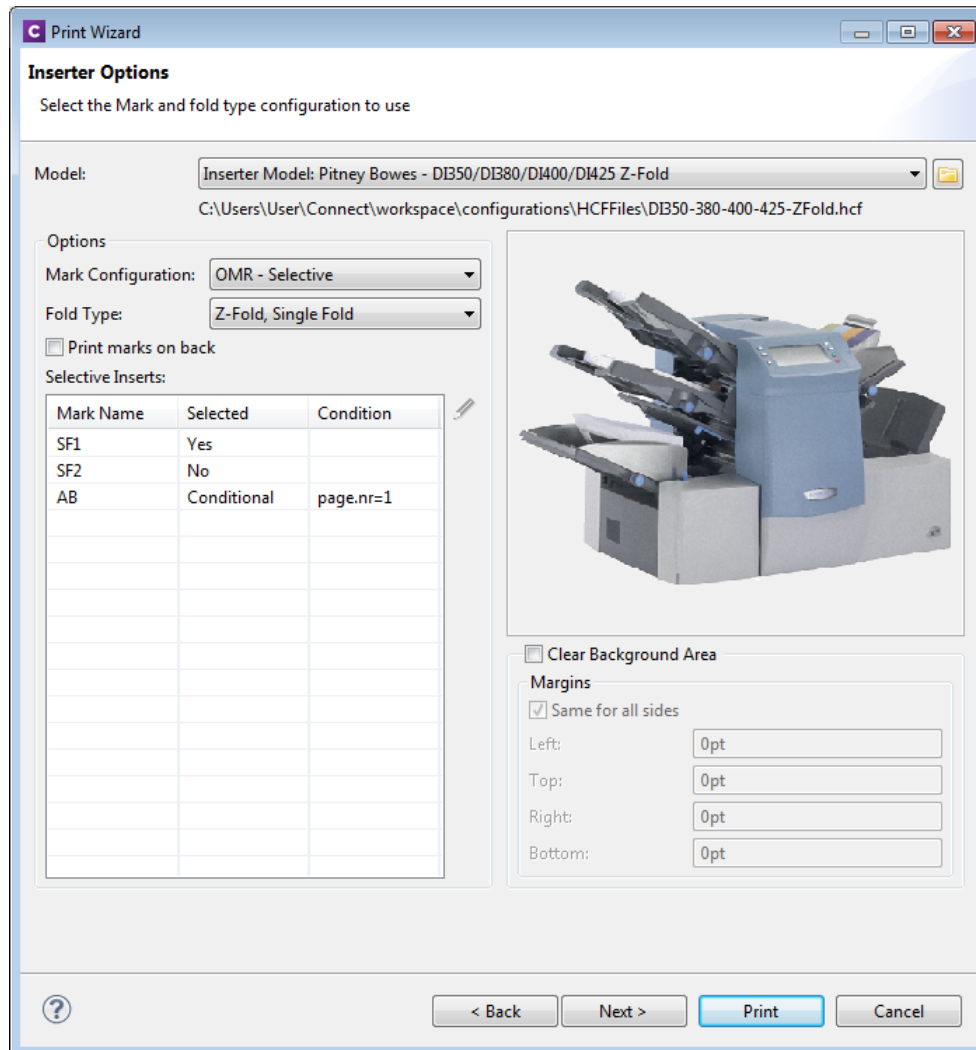
You must then specify the actual PDF signature to be used in the template. Click on the green plus icon next to the All Signatures box to open the PDF Signature dialog:

- Provide a unique name for the signature and select the Keystore on which it should be based.
- Provide details about the reason for the signature and the contact person (can be left blank).
- Provide the password for the specified Keystore (same password as the previous dialog) plus any Alias.
- Set up timestamping if this is required, e.g., if you wish to use VeriSign (the Handler setting must be VeriSign PPKVS or Adobe PPKMS).
- Specify whether or not the signature should be visible in a designated area in the document.
- Click OK when you have finished making your settings to add the signature to the All Signatures box.

Any number of signatures can be set up for the template providing that each is based on one of the specified Keystores. When you now produce your template to PDF, the signature you have set up will be assigned to your template:

24. Inserter Options and OMR Settings

The Inserter options and OMR settings are provided on dedicated pages of the Print Wizard:

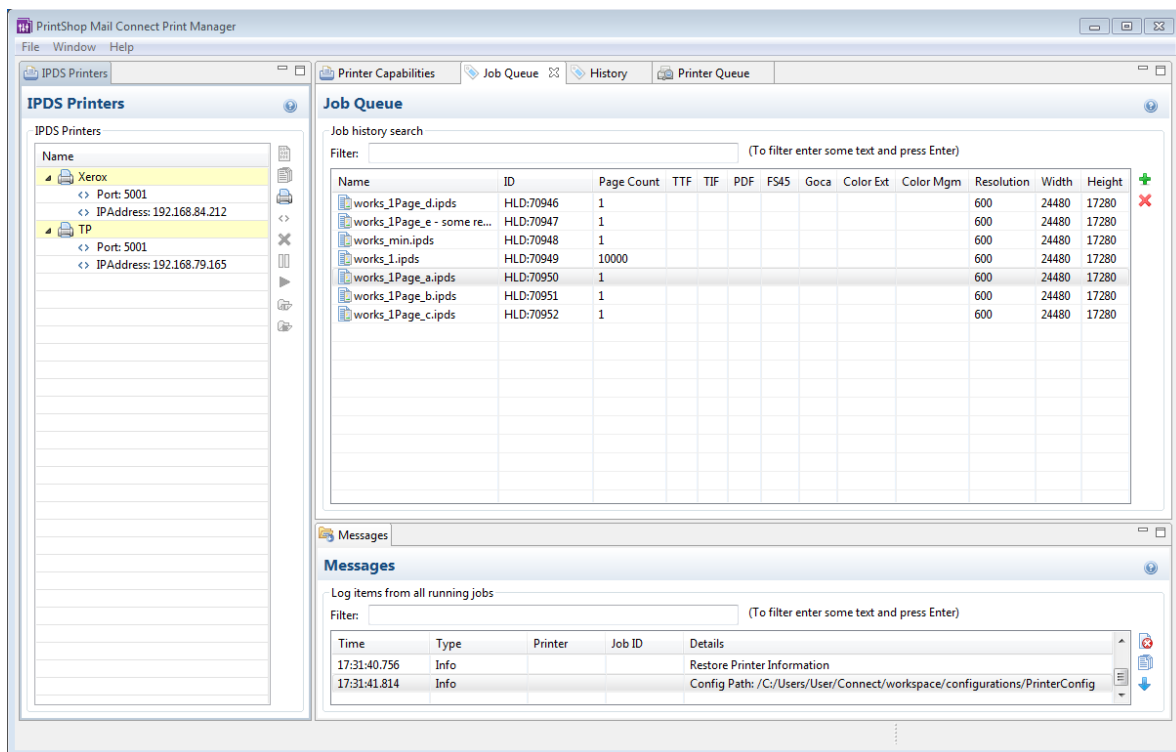


- Specify the required inserter machine in the “Model” box
- Select the OMR type and Fold type in the “Options” box, including whether the OMR should be printed on the front or the back.
- Specify any selective inserts
- Specify a white background for the OMR and its margins

25. Print Manager for IPDS

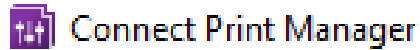


PrintShop Mail® Connect includes a Print Manager tool to enable operators in a print room environment to print and manage IPDS files generated by Connect. It is installed by selecting the “Print Manager” option in the PrintShop Mail® Connect setup.



The general workflow is as follows:

- Print Manager can be installed as both a standalone application or in conjunction with the PrintShop Mail® Connect Designer. After installation, an entry will appear in the Start menu which allows you to open the Print Manager



- The operator sets up a list of available printers in the Print Manager and specifies their properties e.g., IP address, port number etc.
- Three hot folders can be set up for each printer (high priority, medium priority or low priority).
- When producing to the hot folders, jobs are processed immediately in order of priority. Jobs in the High priority folder are processed first, then Medium priority, then Low priority.
- The operator monitors the jobs sent to the generic printer queue and drags them to a priority queue on the required printer
- The operator can also drag jobs directly from Windows Explorer to the required printer.
- The operator can pause and start a printer and specify a page range for a job.

Full documentation on Print Manager can be found in the PrintShop Mail® Connect online help.

Known Issues

1. GoDaddy Certificates

When installing Connect offline, dialogs are available in the setup for installing the GoDaddy certificates. Most users will leave the default settings and click “Next”. In some cases however this may not work correctly. For this reason users should activate “Place all certificates in the following store” and then select the “Trusted Root Certification Authorities” as the target certificate store.

2. Available Printer Models

Note that only one Printer Model will appear on the Advanced page of the Print Wizard (Generic PDF) by default. To view all available models go to “Window | Preferences | Print | Available Printers” and specify which models you wish to be available on the Advanced page of the Print Wizard. You can go directly to this dialog by clicking on the browse button next to the selection box in the Print Wizard.

3. External Resources in Connect

There are certain limitations on how external resources can be used in Connect. For example if you want to link a file (e.g., CSS, image, JavaScript etc.) from a location on the network but you do not want to have a copy of the file saved with the template you need to do the following:

1. The resource must be located where it can be accessed by all Servers/Slaves run as users. Failure to do this will cause the image to appear as a Red X in the output for all documents which were merged by engines which could not access the file. The job will terminate normally and the error will be logged.

2. The file must be referenced via a UNC path e.g.,

<file:///w2k8r2envan/z%20images/Picture/Supported/JPG/AB004763.jpg>

- a. UNC paths are required because the services will be unable to access mapped network drives (Windows security feature).
- b. The engine processing the job will look on the local file system for the direct file path leading to the “resource not found” issue mentioned above.

Important Note: The Designer itself and Proof Print do not use processes that run as services and they may find local files with non-UNC paths which can lead to the false impression that the resources are correct.

4. Colour Model in Stylesheets

In Version 1.2 the colour model of colours defined in a stylesheet can sometimes change after editing the stylesheet. This is a known issue and will be addressed in a subsequent release.

5. Online Help Links Point to Introductory Page

Context sensitivity for the online help is disabled in PrintShop Mail® Connect Version 1.2 meaning that all links and F1 calls currently point to the introductory page of the help. Context sensitivity will be re-introduced in a subsequent release of PrintShop Mail® Connect.

6. Image Preview in Designer

If in the Windows Internet settings (Connection Settings -> LAN configuration) a proxy is enabled, but "Bypass proxy settings for local addresses" is not checked, the image preview service, conversion service and live preview tab in the Designer will not work and exhibit the following issues:

- Images will be shown as 0 size boxes (no red 'X' is displayed)
- Live preview does not progress, and when re-activated reports "browsers is busy"

To fix the issue you must check the "Bypass proxy settings for local addresses" option.

7. Encoding

Issues may sometimes be encountered in menus and templates when running PrintShop Mail® Connect on a non-English operating system. These are due to encoding issues and will be addressed in a later release.

8. VIPP Output

Some templates set up with landscape orientation are being produced as portrait in VIPP. It can also sometimes be the case that text and images can be slightly displaced. These are known issues and will be addressed in a later release of PrintShop Mail® Connect.